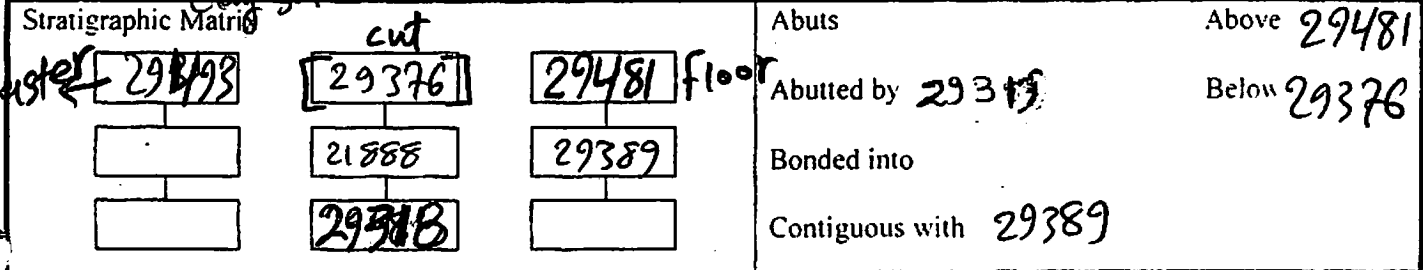
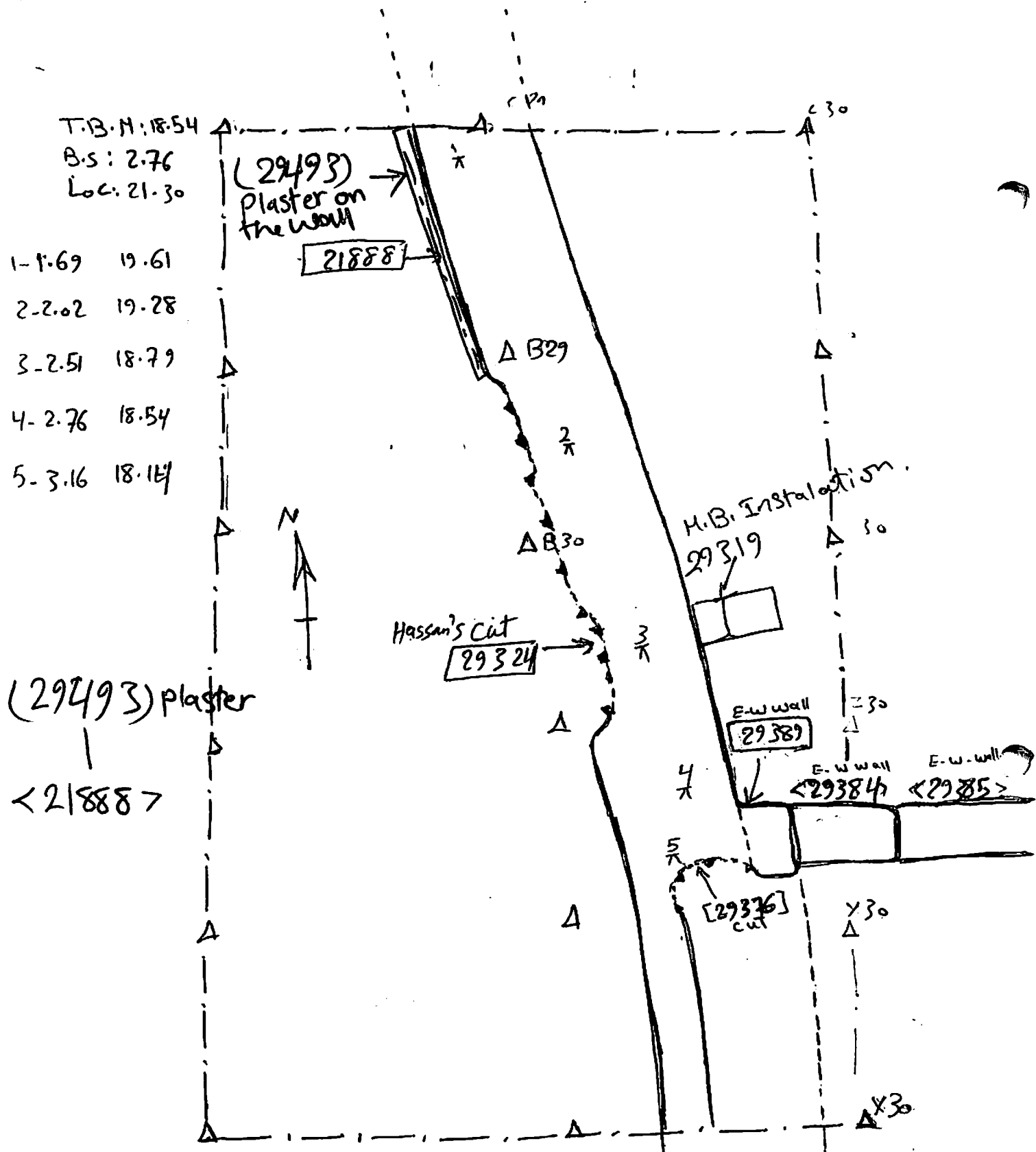


1. Material 2. Size of materials 3. Finish 4. Coursing/bond 5. Form 6. Direction of faces 7. Orientation 8. Dimensions 9. Associated collapse 10. Founds, cuts & fills 11. Repaired 12. Associated floors 13. Plastered 14. Wall core 15. Types of brick (%) 16. Composition of bricks 17. Dimensions of bricks (sample of three)	1) Mud Brick 2) Bricks VARY Forms. 38cm To 40cm long X 20cm To 13cm wide 3) Squared. 4) Stretcher on the Sides But the core in the Middle from Ceramics Shards and silt. 5) Wall 6) East-west 8) 54cm To 1.80m wide X 18.50m extended to the north 7) North-South 9) It related with the f# [29381] decayed Mud brick Tumble 10) cut # [29376] with fill from pottery shards and silt. [29375] - also there is another cut [29324] irregular cut from Hassan's Time 11) the E-W Wall 29384 May be this Wall repaired, the wall To be close a door was open. 12) NA 13) the wall has a plaster on her western side (29499) 14) Wall core from ceramic Shards, Limestone and silt 15) Sandy silt 16) Mud-Sand - ceramics and silt 17) see above
--	--



INTERPRETATION	Enclosing	Internal	External
Reason for decay	the South Side of the Wall Truncated from the South		
Indications of original dimensions	by the cut [29376] from Selim Hassan's Time		
Indications of original functions	maybe. 2) the original size of the wall is 2.10m. 3) As for the wall core it from Ceramics and silt. 4) there is another cut Irregular from Hassan's Time also He wanted to see the line of the plaster on the wall from the western side it has f# 29324 and its Modern fill has f# 29323 - this wall still extent to the North Side under the sand		
Associated contexts:	29389 - 29384 - 29376		
Context Same As:			
Drawing Nos:			

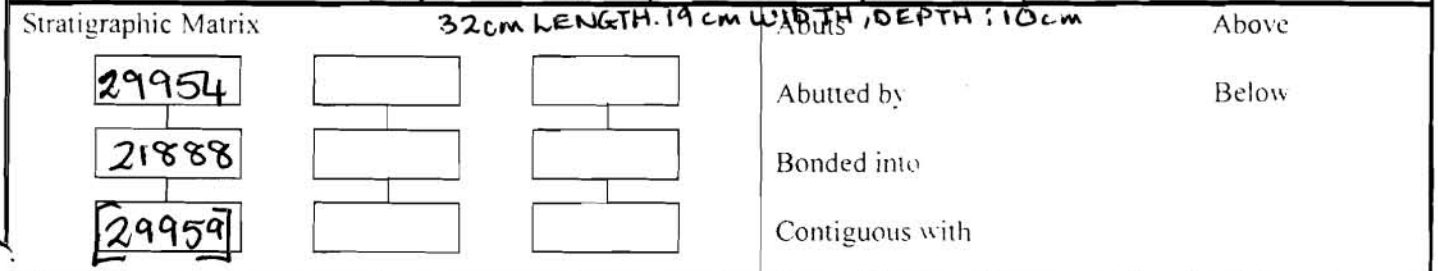
Photographs (Digital)	Finds		Samples
	Bag No.	Type	
			Building Complex
			Phase
	Site Book Pages	Checked	Initials Date



this wall had 2 Feature number in season 2007
 [28809] [28830] and Both of them are equal [21888]

- | | |
|--|---|
| 1. Material | 1) COMPRISES 3 DIFFERENT TYPES OF MUD-BRICK |
| 2. Size of materials | a) NILE CLAY BRICK - VERY HEAVY IN SILT MAKE-UP |
| 3. Finish | b) MUD-BRICK - WITH NILE SILT INCLUSIONS |
| 4. Coursing/bond | c) SANDY MUD-BRICK - DESERT SAND INCLUSIONS |
| 5. Form | 2) SEE NO. (17) |
| 6. Direction of faces | 3) SQUARE 4) MINOR TRACES OF SAND |
| 7. Orientation | 5) WALL 6) EAST & WEST 7) NE/SW |
| 8. Dimensions | 8) LENGTH: 20m32cm WIDTH: 1m56cm. HEIGHT: 1m.84cm. |
| 9. Associated collapse | 9) NONE APPARENT |
| 10. Finds, cuts & fills | 10) FREQ POTTERY, OCC CHARCOAL & ANIMAL BONE. CUT 29959 |
| 11. Repaired | 11) NO REPAIRS VISIBLE |
| 12. Associated floors | 12) UNABLE TO TELL FROM SONDAGE EXCAVATED |
| 13. Plastered | 13) NO PLASTER VISIBLE |
| 14. Wall core | 14) CRUSHED POTTERY, STONE, CBM CENTRAL CORE |
| 15. Types of brick (%) | 15) 100% MUD-BRICK |
| 16. Composition of bricks | 16) SEE (1) ABOVE |
| 17. Dimensions of bricks (sample of three) | 17) 37cm LENGTH, 19cm WIDTH, DEPTH: 14cm |

ALL EVENLY REPRESENTED



INTERPRETATION Enclosing Internal External

Reason for decay: SUBSTANTIAL MUD-BRICK WALL WITH RUBBLE CORE (29954). CONSTRUCTED INTO A CAIT (29959) WHICH WAS MADE INTO THE UPPER TERRACE & BED-ROCK (28849).

WEST FACING ELEVATION HAS A FLUSH RELATIONSHIP WITH THE UPPER TERRACE. SEE SKETCH OVERLEAF FOR VISIBLE EXTENT. THE ONLY ASPECT OF THIS FEATURE EXCAVATED THIS SEASON WAS WITHIN SONDAGE 'A'. AT SOME LATER DATE THE WALL APPEARS TO HAVE RECEIVED SOME REPAIR ON ITS WEST FACING ELEVATION.

Associated contexts: (29953) (29954) 2008-125: Pre-ek PLOA
 2008-127 } ELEVATIONS FROM SONDAGE 'A'
 2008-128 } 2007-220 2008-143
 2008-129 } 2007-214
 Context Same As: 2883009 2008-42
 Drawing Nos: 2008-126 (ELEVATION) FROM SONDAGE 'A' 2008-46 P21888

Photographs (Digital)	Finds		Samples 2008-0351 & 0352 10 L. FLOTATION
	Bag No.	Type	
510914 - ELEVATION WITHIN SONDAGE 'A'	2008-0347	POTTERY	WET SIEVE: 2008-0350, 0354
510934 } Progress	2008-0349	CHARCOAL	Building Complex 0353, 0355, 0356
510935 } Shots.	2008-0348	BONE	
	2008-0357	POTTERY FROM RUBBLE CORE	Phase
	2008-0358	BONE	" "
	2008-0359	CHARCOAL	Checked " "
	2008-0360	SHELL	" "
	2008-0421	POTTERY	Checked " "

* ORIGINALLY GIVEN # ON THE 18/01/2008 BUT NO FEATURE FORM COMPLETED.

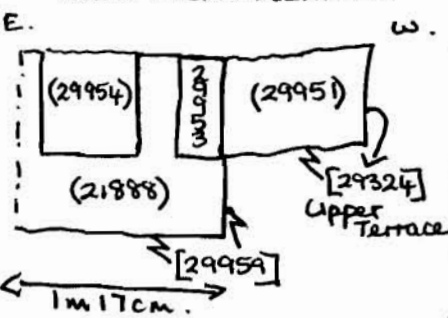
Phase: 2.

SKETCH PLAN NOT TO SCALE

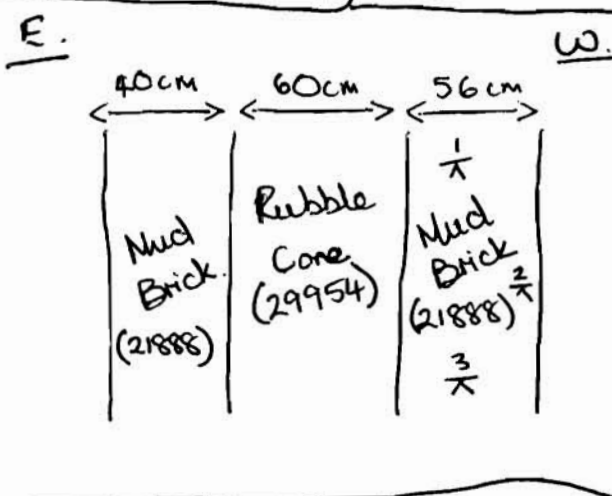
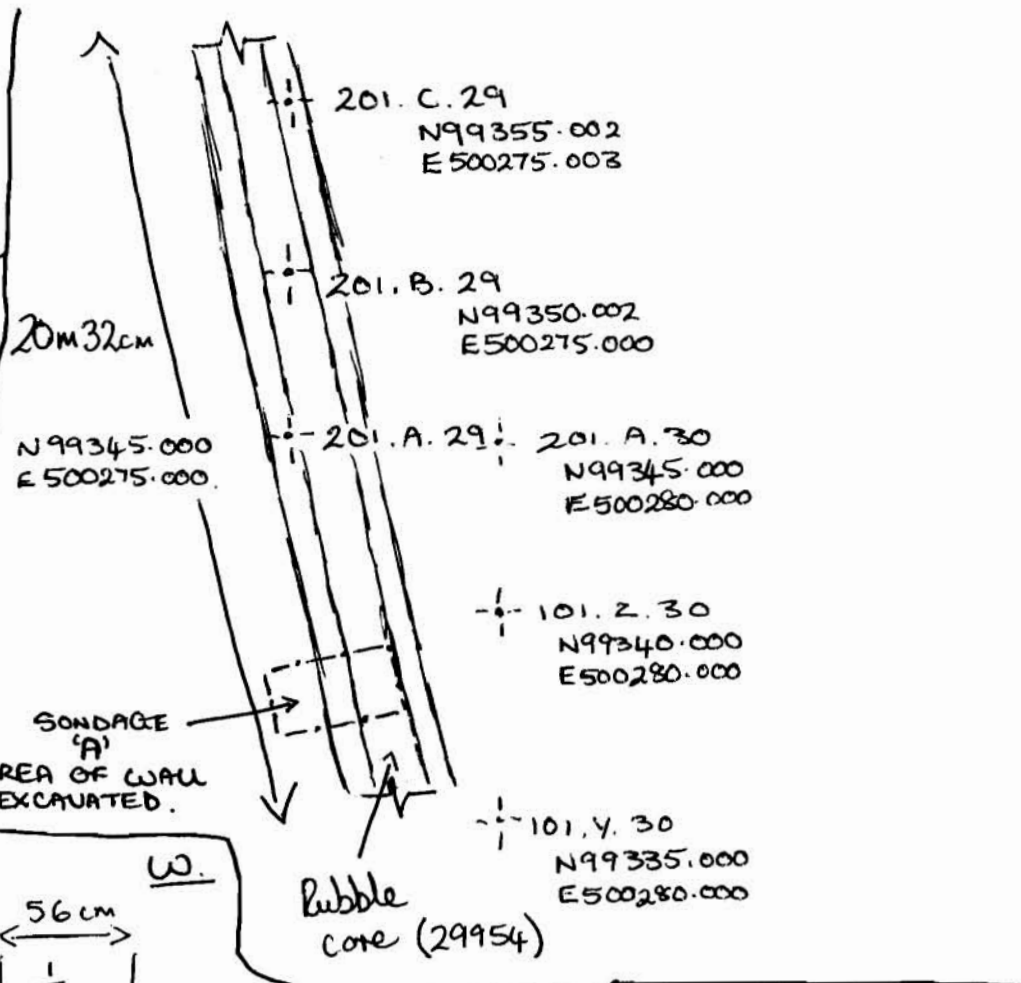
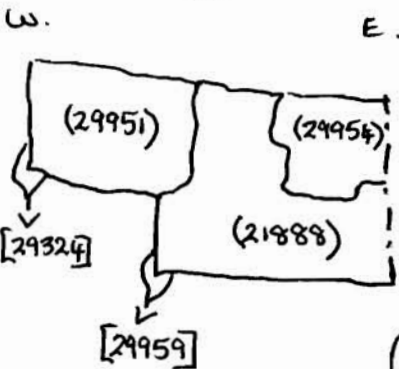


(21888)

NORTH FACING ELEVATION



SOUTH FACING ELEVATION



TBM: 17.70
 BS: 2.20
 IH: 19.90

	FS	RL
1/X	1.44	18.46
2/X	1.47	18.43
3/X	1.41	18.49

Profile SONDAGE 'A'

