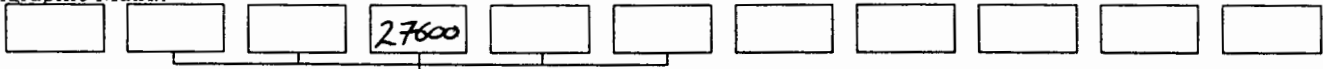


# GIZA PLATEAU MAPPING PROJECT

Grid Square(s) <i>201-032</i>	Area <i>KKT</i>	Context Type <i>DEP</i>	Central Coords	Context <i>28456</i>
DEPOSIT		<i>1) FILL</i>	CUT	
1. Compaction		<i>2) Mud Galm</i>	1. Shape in plan	
2. Colour		<i>3) GLEN LCM</i>	2. Corners	
3. Composition/Particle Size (Over 10%)		<i>4) -</i>	3. Dimension/Depth	
4. Inclusions (Under 10%) occa / mod / freq		<i>5) 0.50m (N-S) x 0.42 (E-W)</i>	4. Break of slope-top	
5. Thickness and extent		<i>6) -</i>	5. Sides	
6. Top and bottom boundaries		<i>7) -</i>	6. Break of slope-base	
7. Other comments		<i>8) Not excavation</i>	7. Base	
8. Method and conditions			8. Orientation	
			9. Inclination of axis	
			10. Truncated (if known)	
			11. Fill #s	
			12. Other comments	
			Draw profile overleaf	

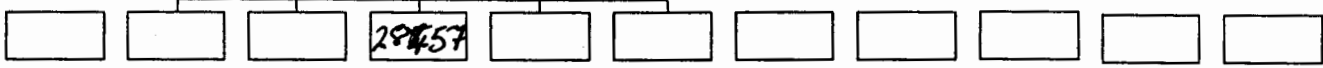
Type of feature:

Stratigraphic Matrix



This context is

*28456*



Your interpretation:

Internal

External

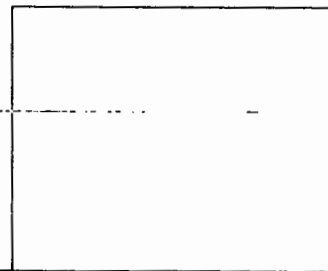
Structural

Other (specify)

Your discussion:

*Fill of [28457] - Max 6/iii/07*

Placement in square



Context same as:

See contexts:

Site Book Refs:

Matrix phase:

*1*

Initials and date

*ac 6/iii/07*

Checked Interpretation:

Provisional period

Group/Phase

Initials and date

Context Number <i>28456</i>	GPMP
<b>Bag Numbers</b>	
Ceramics	Objects
Environmental Samples & Type	Exotics
Charcoal	
	Other
Bones	
Lithics	
Photographs	
<b>Drawings</b>	
Plans <i>2007-208</i>	Sections
Top Elevation <i>19.01</i>	Bottom Elevations
Sketch Plan	