

AREA: KKI-E	GRID SQUARE (S): 201. H36	GRID CO-ORDINATES: E N	INITIALS & DATE: KO 8/03/2011	FEATURE No.: 29062
----------------	------------------------------	------------------------------	----------------------------------	-----------------------

FEATURE TYPE (For example wall, staircase, bench, foundation structure, platform etc.): WALL (BLOCKING)	Full extent visible in plan: <input checked="" type="radio"/> YES / NO
--	---

1. Dimensions (in metres)	Length: from 3.15m to 3.60m	Width: c. 2.20m	Height: up to 2m (N side) up to 1.50m (S side)
2. Type of material(s) used	mud-brick (silty and bubble gum) stone rubble		
3. Coursing (form of construction)	altering systems of headers and stretchers		
4. Orientation	E-W		
5. Associated collapse	unknown		
6. Cut & fill feature #'s	construction cut [32940]/fill (32941) cut by: [30867], [30826] and [32872]		
7. Repaired?	not observed		
8. Associated floors	32411/32412 (bedding or trample horizon)		
9. Surface treatments? E.g. plaster, paint, mouldings	on N face poorly preserved mud plaster 30900 on S face mud plaster 32415, lime wash 32414 and mud 32963 and lime wash 32964		
10. Size of one component	0.10m x 0.16m x c. 0.40m (some bricks appear broken and reused)		
11. Bonding material	-		
12. Excavated	<input checked="" type="radio"/> Yes / <input type="radio"/> No only its core has been excavated		

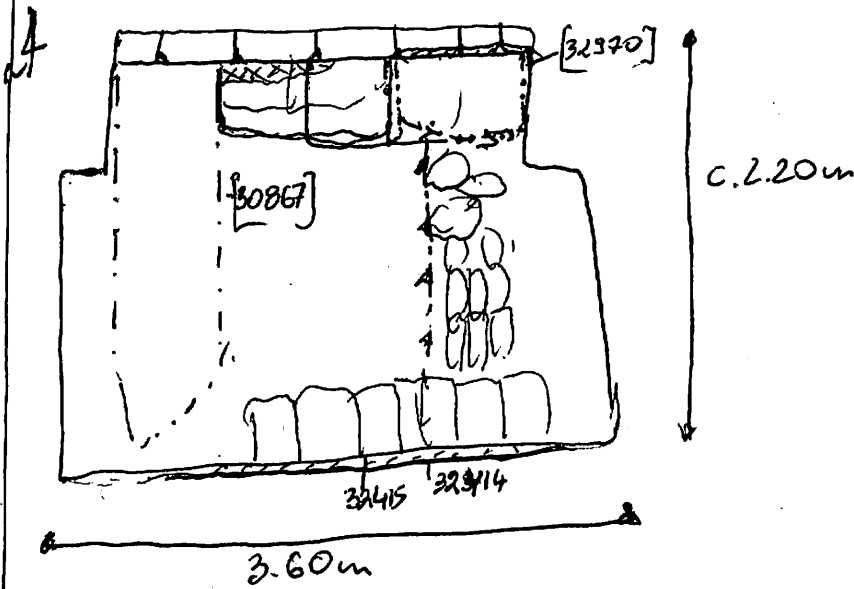
Mini stratigraphic matrix	Abuts: 29068, 32966	Same as: 30884, 30886, 30891
<pre> 32941 30890 30900 32415 +-----+ 30886 = 29062 = 30884 = 30891 32940 32970 32967 </pre>	Abutted by: 32929 30857 32410	Associated features: 32970, [32940]/(32941) 30900, 32414, 32415 32965, 32964 core deposits: 30890, 30887=30889, 30879, 30885=30892
Bonded into: -	Contiguous with: 32929	

Discussion and interpretation:
 This feature is essentially a blocking of the Northern traverse between walls 29068 and 32966. However, it is a wall in its own right, with a construction cut and foundation (32970). It is large, ~~about~~ 2m height and up to 3.60m in width; ~~built~~ well built on the outside and more crude in the middle (core of stones and mudbricks). In season 2009 it has been assigned several numbers which all are same as 29062 (30884, 30886 and 30891). It is truncated by feature of unknown purpose (thought to be a drain) [30867] as well as damaged by the erosion channel [30826] and S. Wassell's intrusion [32872]. It is not clear why plaster 30900 on N face is preserved only in the uppermost part of the wall and completely gone anywhere lower down. It seems that on the S side foundation 32970 was necessary to create a levelled surface for the wall, due to bedrock which slopes up towards the North; on the Northern side construction cut [32940] was executed through several deposits, starting with the first 32935 associated with wall 29068 on well 29068.

It leans towards south, pos. from the pressure of deposits built up against its N-face

Remember: do not just draw the architectural feature in isolation. Show how it relates to surrounding features and include details of surface treatments, repairs/modifications/damage, bonding material(s), and associated cuts. Annotate all aspects of the feature or use a Drawing Key. Measurements must be included for all aspects of the feature and surrounding features.

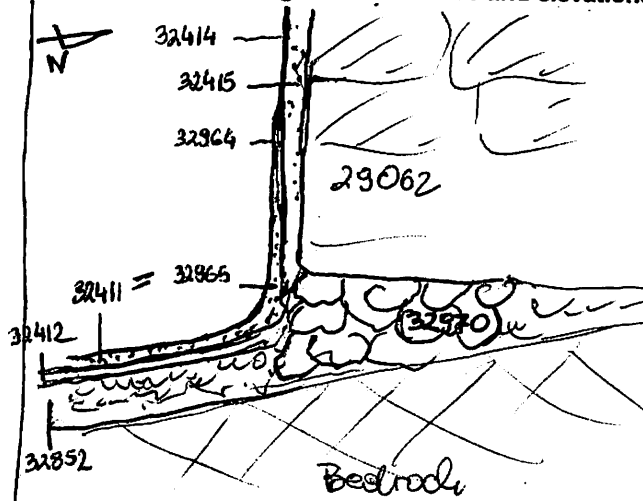
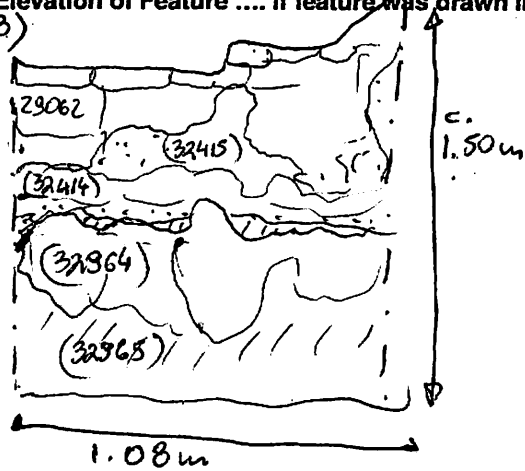
Sketch Plan - Include grid co-ordinates, North arrow, and elevations.



Profile Sketch - State direction the elevation of the feature being drawn is facing e.g. 'West Facing Elevation of Feature If feature was drawn in section then include the grid co-ordinates and elevations.

(in slot B)

A
N



(this is just how it may possibly look in section)

Drawing No.'s: 2011-260	Photo No.'s: 918 344 - 350
2011-261, 2011-138, 1009-351	918 328 - 337
Space No.:	Structure No.: 917330-322, 306 732, 730, 721
Matrix Group:	Matrix Phase:
Samples taken: Bird sample 2011-1033	