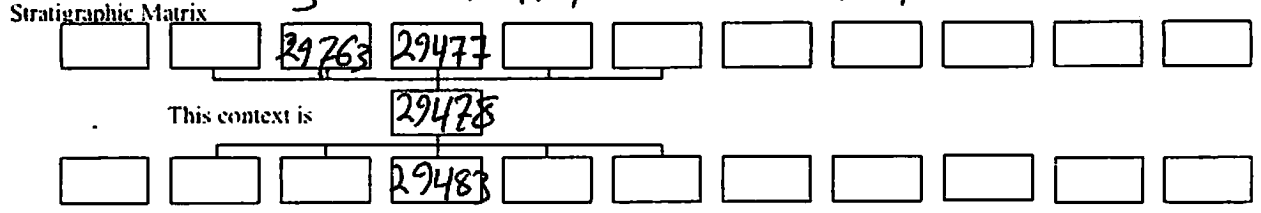


GIZA PLATEAU MAPPING PROJECT

Grid Squares) 201231-32 101231-32	Area KKT-F	Context Type Deposit	Central Coords	Context 29478
DEPOSIT			CUT	
1. Compaction	1- Compact		1 Shape in plan	
2. Colour	2- grayish brown		2 Corners	
3. Composition-Particle Size (Over 10%)	3- Sand 2% and Silt 8% 2% Ceramics		3. Dimension/Depth	
4. Inclusions (Under 10%) occa mod freq	4- 9% Lime stone - 1% Flint - 1% Dolerite.		4 Break of slope-top	
5. Thickness and extent	5- thickness 2.0m extent 3.94m W x 2.03m W		5. Sides	
6. Top and bottom boundaries	6- Top and bottom boundaries clear		6 Break of slope-base	
7. Other comments	7- we excavated it by picks Trowels and Brushes.		7 Base	
8. Method and conditions			8 Orientation	
			9 Inclination of axis	
			10 Truncated (if known)	
			11 Fills	
			12 Other comments Draw profile overleaf	

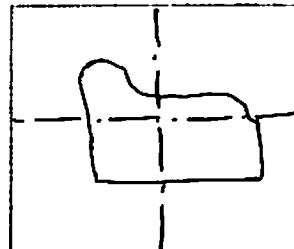
Type of feature: Sandy Mud with freq Ceramics and freq limestones



Your interpretation: Internal External Structural Other (specify)

Your discussion:

Placement in square



Context same as:	See contexts:
Site Book Refs:	Matrix phase: Initials and date NH3 5 Nov 08

Checked Interpretation:

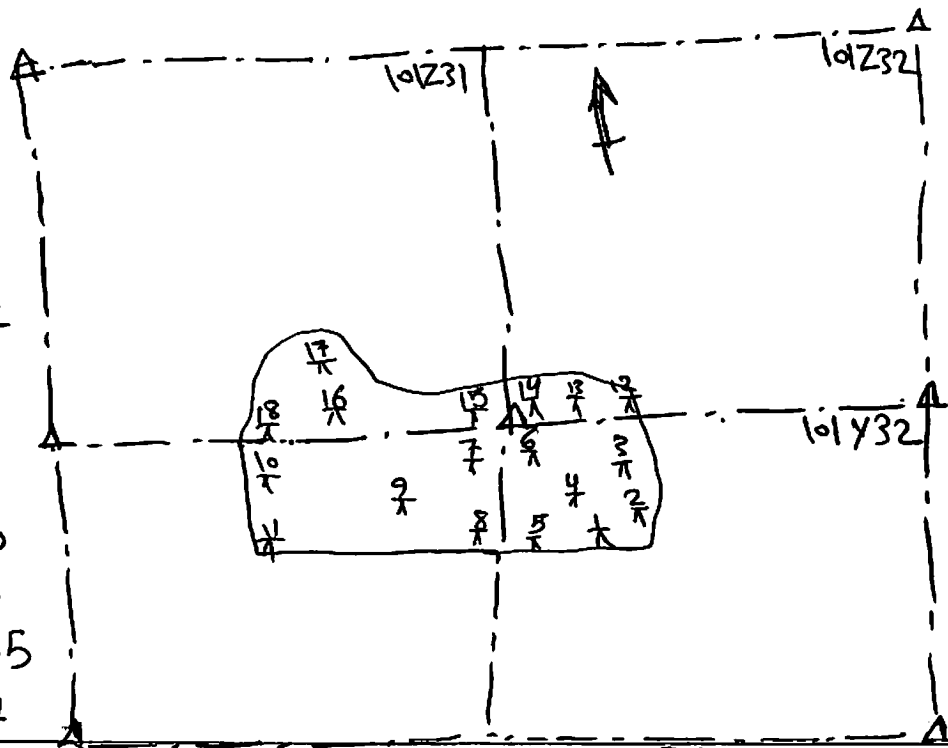
Provisional period	Group/Phase	Initials and date
--------------------	-------------	-------------------

Context Number 29478		GPMP08 KKT-F	
Bag Numbers			
Ceramics 2008-0583/ 2008-0190/		Objects	
Environmental Samples & Type Float 2008-0193		Exotics 1K.100gm Dolerite/2009m Alabaster	
W/S 2008-0194 2008 0195- 9			
Charcoal 2008-0196			
Bones 2008-0122		Other	
Lithics 2008-0183 Flint-Fragment 2008-0191			
Photographs 101495-96			
Drawings			
Plans		Sections	
Top Elevation 17.57 m ASL		Bottom Elevations 17.37 m ASL	

Sketch Plan

T.B.M: 18.54
B.S: 2.60
Loc: 21.14

- 1- 3.69 17.45
- 2- 3.77 17.37
- 3- 3.68 17.46
- 4- 3.67 17.47
- 5- 3.59 17.55
- 6- 3.64 17.50
- 7- 3.61 17.53
- 8- 3.59 17.55
- 9- 3.63 17.51
- 10- 3.59 17.55
- 11- 3.57 17.57
- 12- 3.70 17.44
- 13- 3.69 17.45
- 14- 3.66 17.48
- 15- 3.63 17.51
- 16- 3.61 17.53



17- 3.60 17.54
18- 3.60 17.54