

GPMP 2008	GRID SQUARE(S) 101. R26-27	ARCHITECTURE	CONTEXT 29601
1. Material	① LIMESTONE BOULDERS, + MARL FRAGS.		
2. Size of materials	② MAX = 420mm x 360mm / 420mm x 300mm & MIN = 80mm x 75mm / 20mm x 20mm		
3. Finish	④ RANDOM UNCOURSSED; BOUND w/ YELLOWISH BROWN SILTY SAND w/ MOD SM ANG PEBBLES, COA RT FRAGS.		
4. Coursing/bond	③ ROUGHLY HEAVY w/ <sup>Smooth</sup> FACES		
5. Form	⑤ INTERNAL WALL. ⑥ S + N. ⑦ E-W		
6. Direction of faces	⑧ N-S = 0.54m E-W = 8m. DEPTH = 0.55m.		
7. Orientation	⑨ N/A		
8. Dimensions	⑩ N/A		
9. Associated collapse	⑪ - ⑫ - ⑬ - ⑭ - ⑮ -		
10. Founds. cuts & fills			
11. Repaired			
12. Associated floors			
13. Plastered			
14. Wall core			
15. Types of brick (%)			
16. Composition of bricks	E MARL = 170mm x 70mm MIN 400mm x 70mm		
17. Dimensions of bricks (sample of three)	MIN = 120mm x 100mm 100mm x 60mm		

Stratigraphic Matrix	<input type="checkbox"/>	<input type="checkbox"/>	<input type="checkbox"/>	Abuts	Above
	<input type="checkbox"/>	29601.	<input type="checkbox"/>	Abutted by	Below
	<input type="checkbox"/>	<input type="checkbox"/>	<input type="checkbox"/>	Bonded into	29594 29286 29600 29601
				Contiguous with	

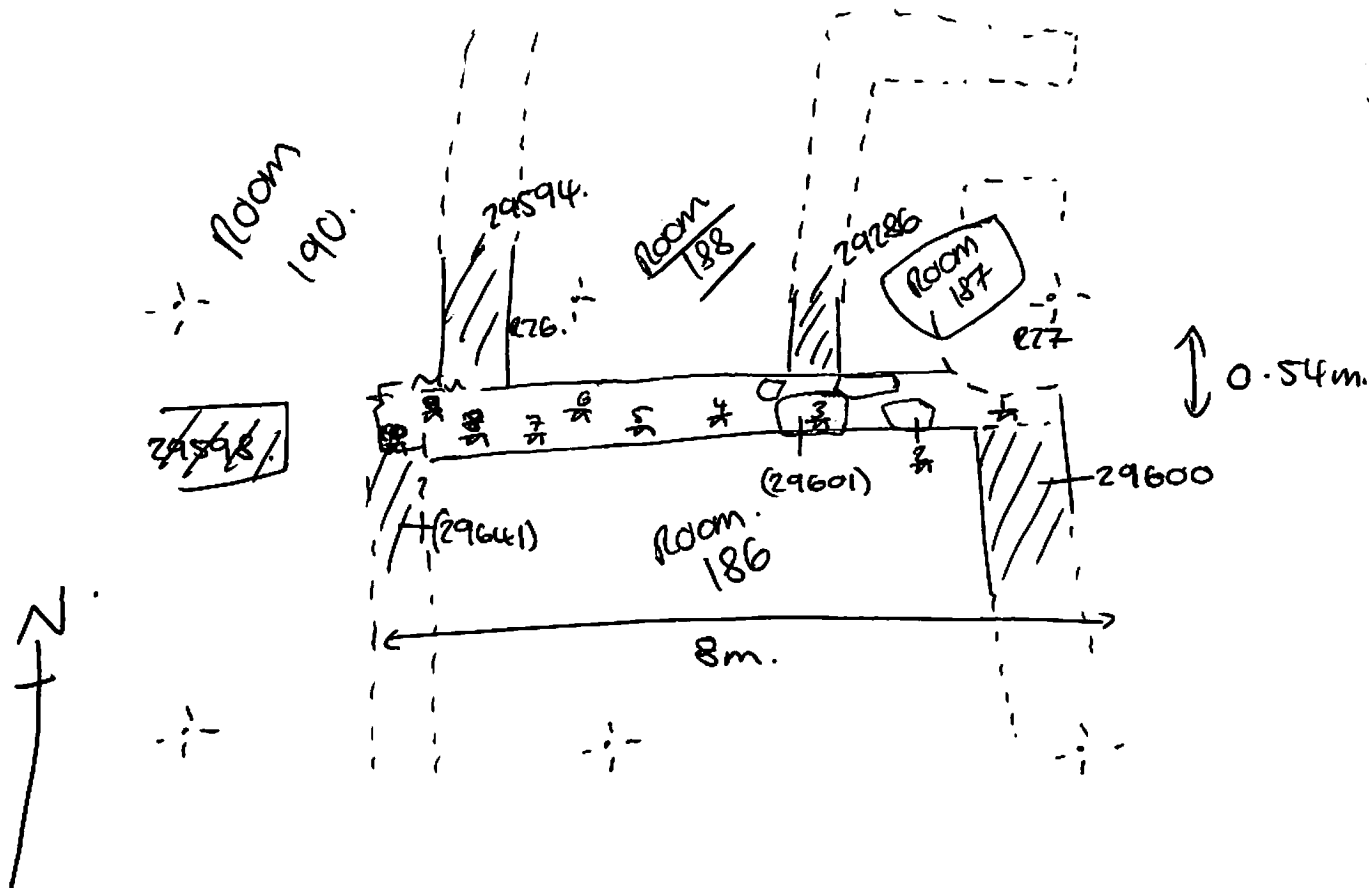
INTERPRETATION	Enclosing	Internal	External
Reason for decay	E-W FIELDSTONE WALL		
Indications of original dimensions	DEMARCATING ROOMS [188] TO N + [186]		
Indications of original functions	P.S. ALSO DEFINES S LIMIT OF ROOM [187] TO NE'		

Associated contexts: 29594, 29286, 29600, 29601, 29598

Context Same As:

Drawing Nos: 2008-13, 2008-14.

Photographs (Digital)	Finds		Samples
	Bag No.	Type	
510880			
510881			Building Complex
101540 - 101542			Phase
	Site Book Pages	Checked	Initials Date



ST	RL
1	18.38
2	18.62
3	18.65
4	18.58
5	18.53
6	18.58
7	18.61
8	18.64
9	18.83
10	18.80