

GPMP GIZA

Site: SAFS 2/LFM Area: KKT-N	GRID SQUARE(S) 201-D21	ARCHITECTURE	FEATURE 34386
1. Material 2. Size of materials 3. Finish 4. Coursing/bond 5. Form 6. Direction of faces 7. Orientation 8. Dimensions 9. Associated collapse 10. Foundations, cuts & fills 11. Repaired 12. Associated floors 13. Plastered 14. Wall core 15. Types of brick (%) 16. Composition of bricks 17. Dimensions of bricks (sample of three)	1) MULDBRICK 2) HALF BRICK 0.22m X 0.20m, WHERE BRICK 0.40m (L) X 0.23m (W) 3) REGULAR 4) 2 HALF BRICKS EITHER SIDE OF A STRETCHER WITH ANOTHER 5) EMPLACEMENT HALF BRICK TO THE NE. 6) NW STRUCTURE. 7) NE/SE 8) 1.05m (L) BY 0.23m (W) 9) UNKNOWN 10) " 11) " 12) " 13) " 14) NO 15) UNKNOWN 16) " 17) SEE #2.		
Stratigraphic Matrix			Abuts Above Abutted by Below Bonded into Contiguous with
INTERPRETATION	Enclosing	Internal	External
Reason for decay	NOT EXCAVATED - NUMBER ASSIGNED DURING DATA		
Indications of original dimensions	CURATION PROJECT.		
Indications of original functions	ON POST-EX PLAN 2009-166 IT IS WRITTEN THAT THESE ARE 'MULDBRICKS IN LAYER (31716)', FEATURE (31716) WAS EXCAVATED ON THE SOUTHERN SIDE OF SPACE 11581 SO NOT SURE WHY THIS FEATURE WAS LEFT IN. THEY WERE ASSIGNED THEIR OWN NUMBER BECAUSE THERE IS A SIMILAR FEATURE (33897) IN THE SAME TYPE OF SPACE (11602 IN STRU 15195) & SAME PART OF THE SPACE. THESE FEATURES MAY HAVE BEEN PART OF THE		
Associated context	FUNCTION OF THE SPACE WHICH SELIM HASSAN THOUGHT WAS THE KITCHEN.		
Context Same As:			
Drawing Nos:	2009-166 + ELEVATION DRAWING: 2009-170 & 2009-171		
<u>Photographs</u> (feature in plan, elevation, materials used, surface treatment e.g. plaster, paint etc.)	<u>Finds</u>		<u>Samples</u> (flotation, wet sieve, materials used e.g. bricks, stone, wood, bonding material etc.)
Photograph No. Description	Description	Artefact no.	Sample No. Description
	Phase:	Checked	Initials DCJ Date 06 MAY 2013

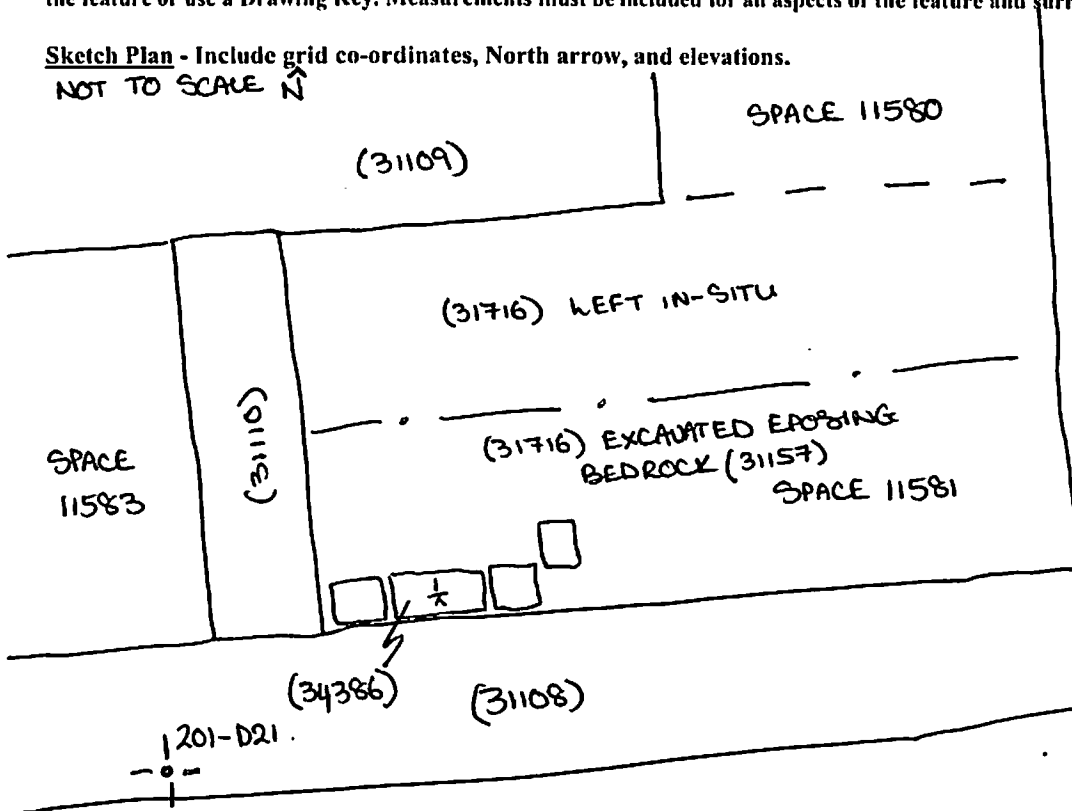
(34386)

Sketch Drawings (in plan and in profile)

Remember: do not just draw the architectural feature in isolation. Show how it relates to surrounding features and include details of surface treatments, repairs/modifications/damage, bonding material(s), and associated cuts. Annotate all aspects of the feature or use a Drawing Key. Measurements must be included for all aspects of the feature and surrounding features.

Sketch Plan - Include grid co-ordinates, North arrow, and elevations.

NOT TO SCALE \uparrow



Profile Sketch

- State direction the elevation of the feature being drawn is facing e.g. 'West Facing Elevation of Feature
- If feature was drawn in section then include the grid co-ordinates and elevations.

TBM: 23.23
BS: 1.89
IH: 25.12
FS RL
 $\frac{1}{x}$ 2.30 22.82.