

GPMP GIZA

Site: <b>SAPS 2 / -LTM</b> Area: <b>KKT-F.</b>	GRID SQUARE(S) <b>101-233, 101-233</b>	ARCHITECTURE	FEATURE <b>34398</b>		
1. Material	1) <b>MUDBRICK</b>				
2. Size of materials	2) <b>0.41m (L) X 0.18m (W) FROM PLANS.</b>				
3. Finish	3) <b>REGULAR</b>				
4. Coursing/bond	4) <b>2 ROWS OF HEADERS TO THE NORTH, SOUTHERN</b>				
5. Form	5) <b>WALL. 2 OUTER ROWS OF HALF BRICKS.</b>				
6. Direction of faces	6) <b>NE   SW.</b>				
7. Orientation	7) <b>NW   SE</b>				
8. Dimensions	8) <b>3.15m (L) X 0.80m (W)</b>				
9. Associated collapse	9) <b>UNKNOWN</b>				
10. Foundations, cuts & fills	10) <b>  </b>				
11. Repaired	11) <b>  </b>				
12. Associated floors	12) <b>  </b>				
13. Plastered	13) <b>  </b>				
14. Wall core	14) <b>NO</b>				
15. Types of brick (%)	15) <b>UNKNOWN</b>				
16. Composition of bricks	16) <b>  </b> 17) <b>SEE # 2.</b>				
17. Dimensions of bricks (sample of three)					
Stratigraphic Matrix		Abuts	Above		
		Abutted by	Below		
		Bonded into	<b>(33016)</b>		
		Contiguous with			
INTERPRETATION					
<b>Enclosing</b> Internal      External					
Reason for decay	NOT EXCAVATED - NUMBER ASSIGNED DURING				
Indications of original dimensions	DATA CURATION PROJECT.				
Indications of original functions	PREVIOUSLY LUMPED WITH (33016).				
<b>REMAINS OF THE WESTERN WALL OF STRUCTURE 15262 (BUILDING L)</b>					
<b>- STREET SPACE 11374.</b>					
Associated contexts:					
Context Same As:					
Drawing Nos: <b>2011-133, 2011-137</b>					
<b>Photographs</b> (feature in plan, elevation, materials used, surface treatment e.g. plaster, paint etc.)		<b>Finds</b>			
		Description	Artefact no.		
		/			
Photograph No.	Description			Sample No.	Description
<b>613465</b>					
<b>613466</b>					
<b>613467</b>					
		Phase:	Checked		
			Initials <b>DC'S</b> Date <b>05 JUNE 2013.</b>		

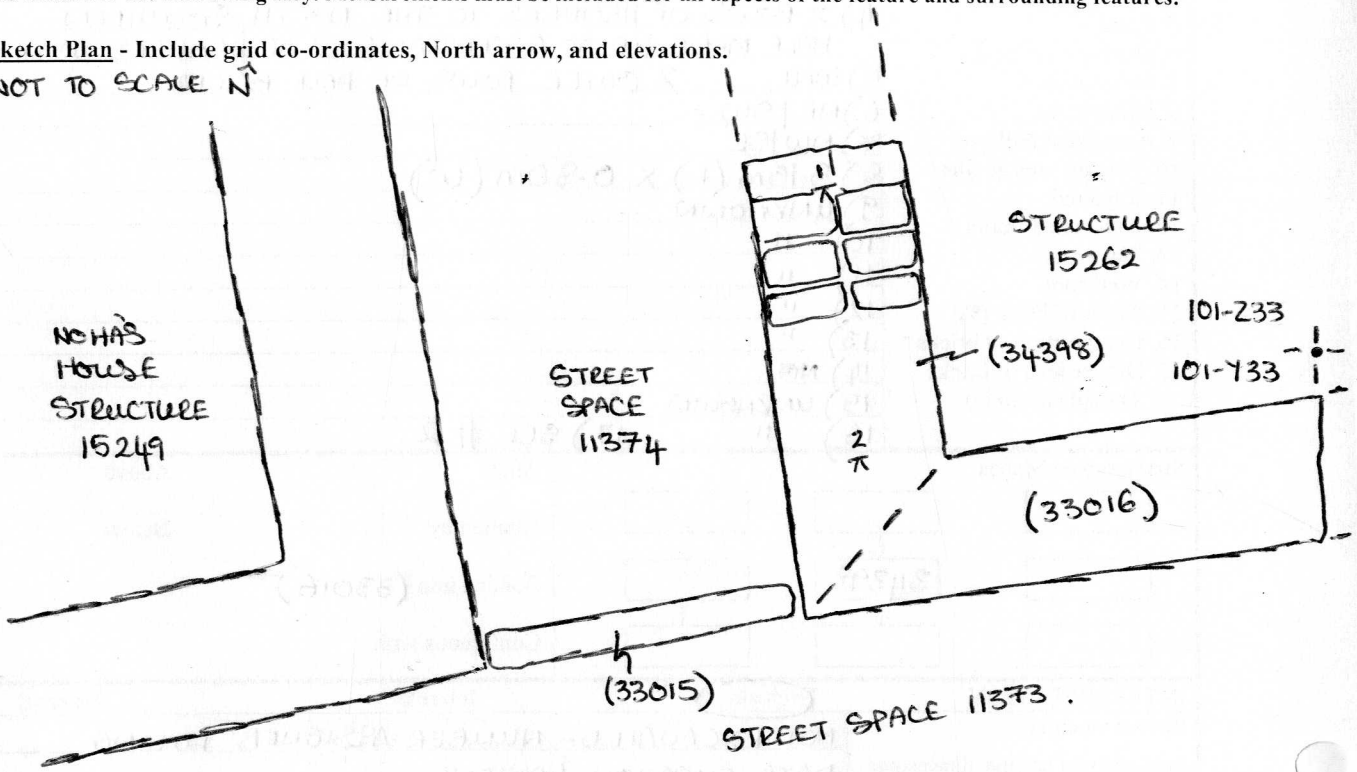
(34398)

Sketch Drawings (in plan and in profile)

Remember: do not just draw the architectural feature in isolation. Show how it relates to surrounding features and include details of surface treatments, repairs/modifications/damage, bonding material(s), and associated cuts. Annotate all aspects of the feature or use a Drawing Key. Measurements must be included for all aspects of the feature and surrounding features.

Sketch Plan - Include grid co-ordinates, North arrow, and elevations.

NOT TO SCALE N ↑



Profile Sketch

- State direction the elevation of the feature being drawn is facing e.g. 'West Facing Elevation of Feature ....
- If feature was drawn in section then include the grid co-ordinates and elevations.

TBM: 17.68

BS: 1.12

IH: 18.80

FS      RL

1/π    1.39    17.41

2/π    1.54    17.26