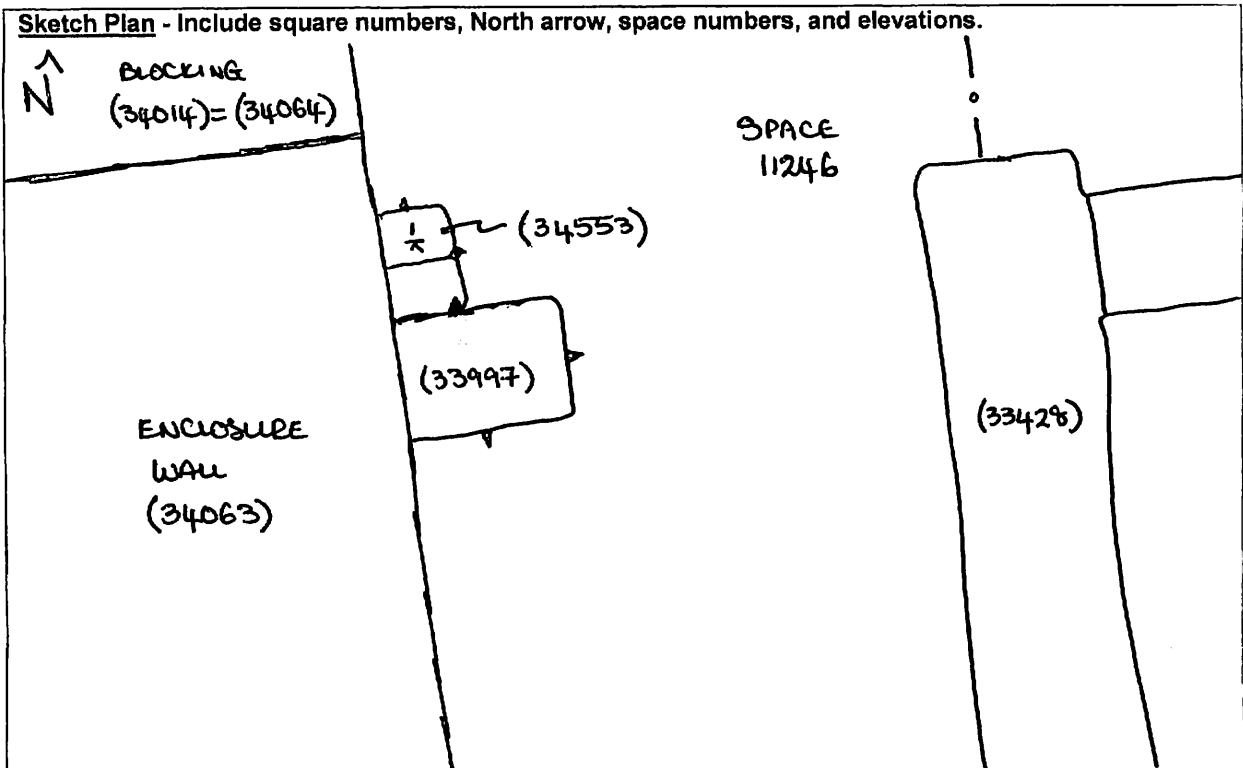


AREA: KKT-E+	GRID SQUARES: 201-F45	INITIALS & DATE: DCJ 08 APRIL 2014	FEATURE No.: 34553
FEATURE TYPE (For example wall, staircase, bench, foundation structure, platform etc.): PILLAR REMAINS?		Full extent visible in plan: <input checked="" type="radio"/> YES / NO	
1. Dimensions (in metres)	Length: 0.30m	Width: 0.18m	Height: 0.02m
2. Type of material(s) used	SANDY SILT BRICKS		
3. Coursing (form of construction)	TWO HALF BRICKS SIDE-BY-SIDE		
4. Orientation	NW/SE.		
5. Associated collapse	UNKNOWN		
6. Cut & fill feature #'s	"		
7. Repaired?	"		
8. Associated floors			
9. Surface treatments? E.g. plaster, paint, mouldings	NONE.		
10. Size of one component	0.17m (L) x 0.12m (W) x 0.02m (HGT).		
11. Bonding material	NOT USABLE		
12. Excavated	Yes <input checked="" type="radio"/> No		
Mini stratigraphic matrix 	Abuts:	Same as:	
	Abutted by:	Associated features:	
	Bonded into:	SEE (34502)	
	Contiguous with:		
Discussion and interpretation:  TWO HALF? BRICKS EXTENDING FROM THE NORTH EAST FACING ELEVATION OF ENCLOSURE WALL (34063). MAY BE THE REMAINS OF AN EARLIER PILLAR LIKE (34502) JUST TO THE NORTH.			

Remember: do not just draw the architectural feature in isolation. Show how it relates to surrounding features and include details of surface treatments, repairs/modifications/damage, bonding material(s), and associated cuts. Annotate all aspects of the feature or use a Drawing Key. Measurements must be included for all aspects of the feature and surrounding features.

1  
- 201-  
F45



Profile Sketch - State direction the elevation of the feature being drawn is facing e.g. 'West Facing Elevation of Feature .... If feature was drawn in section then include the grid co-ordinates and elevations.

TBM: 16.81  
 BB: 0.90  
 IH: 17.71  
 FS            RL  
 1/x 1.88      15.83 .

Drawing No.'s: 2014-23	Photo No.'s: 815288, 815289
Space No.: 11246	Structure No.: 15124
Matrix Group: 18222	Matrix Phase:
Samples taken:	Sondage No.: 182 .