

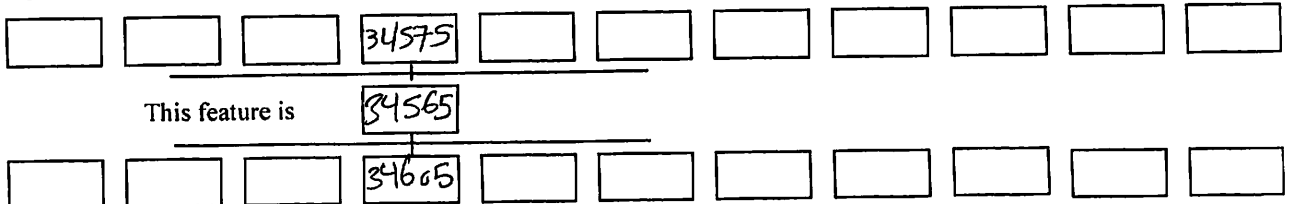
# AERA 2014

# Feature Form

Grid Square(s) 201-146	Area Kktst SBC	Feature Type deposit	Central Co-ords	Feature Number 34565
DEPOSIT				CUT
1. Compaction 2. Colour 3. Composition/Particle Size (Over 10%) 4. Inclusions (Under 10%) occa / mod / freq 5. Thickness and extent 6. Top and bottom boundaries 7. Other comments 8. Method and conditions		1: Compact to loose 2: yellow 3: marl 4: — 5: 0-dm thick by 0.6m long 6: <del>clear</del> TOP FAIRLY CLEAR 7: Excavated - YES / NO 100% Excavated - YES / NO Feature fully visible in plan - YES / NO		1. Shape in plan 2. Corners 3. Dimension/Depth 4. Break of slope-top 5. Sides 6. Break of slope-base 7. Base 8. Orientation 9. Inclination of axis 10. Truncated (if known) 11. Fill #s 12. Other comments Draw profile overleaf
8: /				

Type (refer to synoptic categories): surface treatment (marl plaster)

Stratigraphic Matrix



Your interpretation: Internal External Structural Other (specify)

Your discussion:

Yellow marl plaster coated the ~~western~~ southern face of wall ~~33262~~ (33262). This plaster has been exposed on the lowest courses of the previous massive wall at the western end of sondage 183. It is directly covered ~~and~~ sandy silt render (34605)

Placement in square:

Volume of feature:

Feature same as:

See features:

Space no.: 11640

Structure no.:

Sondage no.: 183

Initials and date  
REM-HRK 15.10.2014

Checked Interpretation:

Provisional period

Local Area Phase:

Site Meta-Phase:

Initials and date

Group:

Feature Number 34565

ARRA 2014  
KRT-C4 SBC

Finds

Objects

Exotics

Lithics

Other

Ceramics

Environmental Samples & Type

Charcoal

Bone

PHOTOGRAPHS

2014-815323 → 815331

DRAWINGS

Sections

Plans  
2014-36

Top Elevation:

15.45

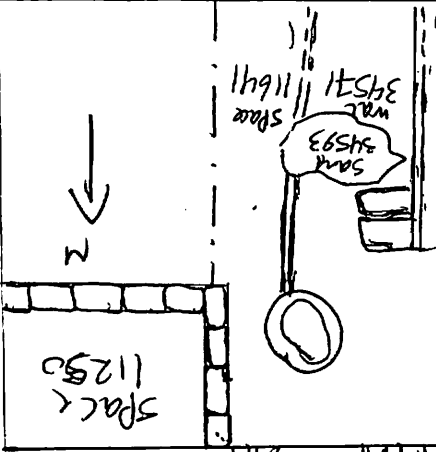
Bottom Elevation:

Sketch Plan. Include: North arrow, grid square, levels, measurements, sondage no. (if applicable), space number, surrounding feature numbers. FOR CUTS INCLUDE A PROFILE SKETCH

FBM 16.81  
B > 2.05  
Loc 18.86  
1 F  
R  
N 344 15.45

Space 11231  
Limit of sondage 983

Space 11640  
(34565)



33411

Space 11237

Space 11253

Space 11232

