

AREA: RKT-E +	GRID SQUARES: 201-I46	INITIALS & DATE: Rem Dia-14/04/84 MK	FEATURE NO.: 34571
FEATURE TYPE (For example wall, staircase, bench, foundation structure, platform etc.):		Full extent visible in plan: YES / NO	
way		YES / NO	

1. Dimensions (in metres)	Length: 1.24m N-S	Width: 0.48m e-w	Height: N/A
---------------------------	-------------------	------------------	-------------

2. Type of material(s) used	Sandy stiff brick
3. Coursing (form of construction)	N/A
4. Orientation	N/S

5. Associated collapse	/
6. Cut & fill feature #'s	N/A
7. Repaired?	N/A

8. Associated floors	34568
----------------------	-------

9. Surface treatments? E.g. plaster, paint, mouldings	plasters 34572, 34573, Mud render 34583 34584
---	--

10. Size of one component	
---------------------------	--

11. Bonding material	
----------------------	--

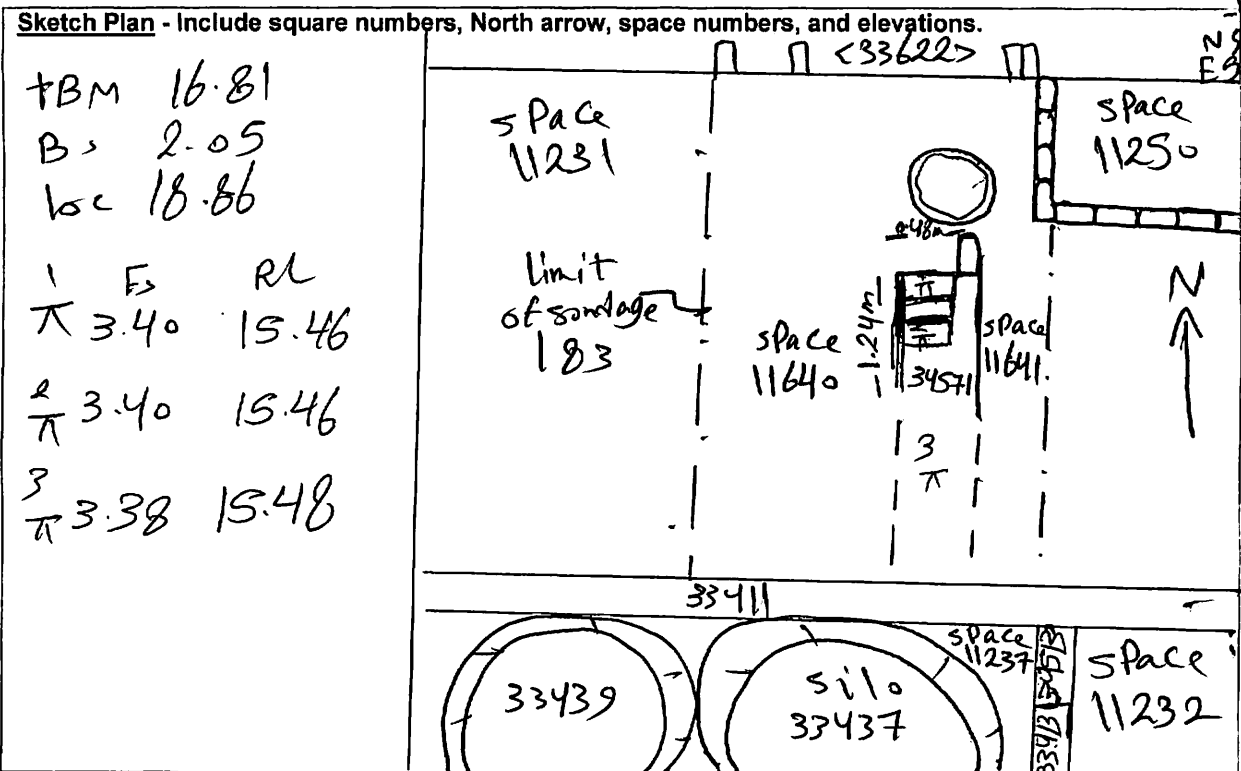
12. Excavated	Yes/No
---------------	--------

Mini stratigraphic matrix	
Abuts:	
Abuted by:	
Bonded into:	
Contiguous with:	
Associated features:	
Same as:	

Discussion and Interpretation:

Sandy stiff brick wall orientates from north to south. This wall occupied the eastern end of the north of sondage 183. It seems that it is the continuation of wall (34510) that has been exposed by Hanam makhmend in the south part of sondage 183 of space 11237. wall (34571) appeared to be a part of an earlier foot print/building dates to a period before the SBC. The two faces of our wall are covered with yellow mortar plaster. It had been not excavated during 2014 season - finally wall (34571) separates between spaces 11640 and 11641 that belong to an earlier structure from the SBC.

Remember: do not just draw the architectural feature in isolation. Show how it relates to surrounding features and include details of surface treatments, repairs/modifications/damage, bonding material(s), and associated cuts. Annotate all aspects of the feature or use a Drawing Key. Measurements must be included for all aspects of the feature and surrounding features.



**Profile Sketch** - State direction the elevation of the feature being drawn is facing e.g. 'West Facing'. Elevation of Feature .... If feature was drawn in section then include the grid co-ordinates and elevations.

Drawing No.'s: 2014-36	Photo No.'s: 2014-85328, 10815331
Space No.: 11640, 11641	Structure No.:
Matrix Group: 18137	Matrix Phase:
Samples taken:	Sondage No.: 183