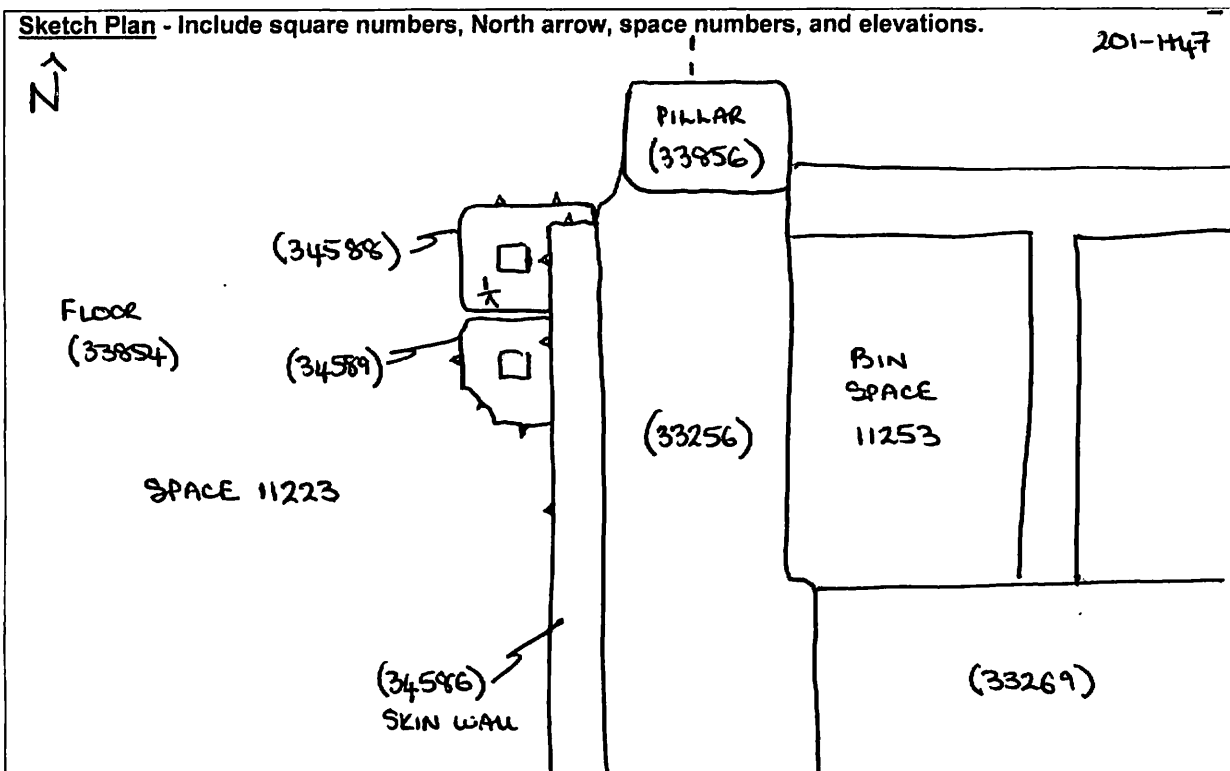


AREA: KKT-E+	GRID SQUARES: 201-H47	INITIALS & DATE: DCJ 13 APRIL 2014	FEATURE No.: 34589
FEATURE TYPE (For example wall, staircase, bench, foundation structure, platform etc.): DOOR POST SOCKET		Full extent visible in plan: YES / <input checked="" type="radio"/> NO	
1. Dimensions (in metres)	Length: 0.27m	Width: 0.24m	Height: 0.05m
2. Type of material(s) used	LIMESTONE.		
3. Coursing (form of construction)	—		
4. Orientation	—		
5. Associated collapse	—		
6. Cut & fill feature #'s	CUT IF PRESENT, NOT USABLE.		
7. Repaired?	UNKNOWN		
8. Associated floors	(33854).		
9. Surface treatments? E.g. plaster, paint, mouldings	—		
10. Size of one component	SEE No. 1.		
11. Bonding material	—		
12. Excavated	Yes <input checked="" type="radio"/> No		
Mini stratigraphic matrix 		Abuts:	Same as:
		Abutted by:	Associated features:
		Bonded into:	
		Contiguous with: (34586) (34588)	
Discussion and interpretation: APPEARED TO BE A RE-USED DOOR POST SOCKET THE EASTERN SIDE OF WHICH WAS SITUATED PARTIALLY UNDER SKIN WALL (34586). AGAINST ITS NORTHERN SIDE WAS SITUATED ANOTHER LIMESTONE RE-USED DOOR POST SOCKET (34588). HAD A RECTANGULAR CUT IN ITS UPPER SURFACE.			

Remember: do not just draw the architectural feature in isolation. Show how it relates to surrounding features and include details of surface treatments, repairs/modifications/damage, bonding material(s), and associated cuts. Annotate all aspects of the feature or use a Drawing Key. Measurements must be included for all aspects of the feature and surrounding features.



Profile Sketch - State direction the elevation of the feature being drawn is facing e.g. 'West Facing Elevation of Feature If feature was drawn in section then include the grid co-ordinates and elevations.

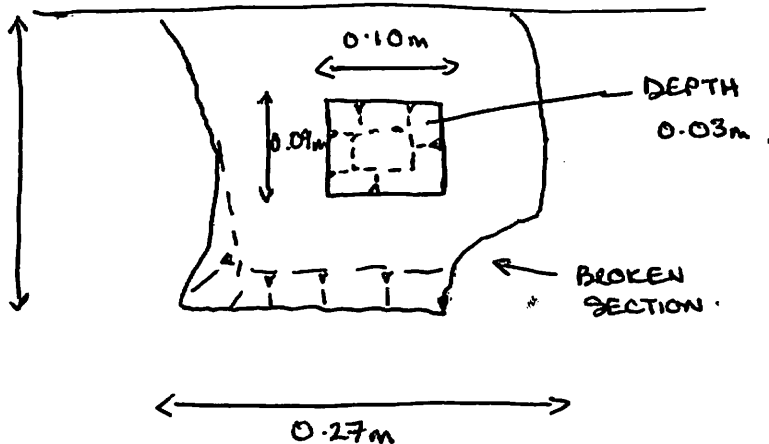
TBM: 16.69
 BS: 0.88
 IH: 17.57

FS
 1/2 1.93

RL
 15.64

0.24m

WALL (34586)



Drawing No.'s: 2012-121 (201-1147)	Photo No.'s: 815349, 815350
Space No.: 11233	Structure No.: 15124
Matrix Group: 18129	Matrix Phase:
Samples taken: /	Sondage No.: /