

GIZA PLATEAU MAPPING PROJECT

Grid Square(s) 101. 266, 267	Area KKT	Context Type Dep-	Central Coords	Context 29649
DEPOSIT				CUT
1. Compaction		1. Compact to firm		1. Shape in plan
2. Colour		2. mid blackish grey		2. Corners
3. Composition/Particle Size (Over 10%)		3. silty clay		3. Dimension/Depth
4. Inclusions (Under 10%) occa / mod / freq		4. occasional ls chips/ceramic		4. Break of slope-top
5. Thickness and extent		5. length 5.2m width 4.3m Thick: N/A		5. Sides
6. Top and bottom boundaries		6. N/A		6. Break of slope-base
7. Other comments		7. N/A		7. Base
8. Method and conditions		8. N/A		8. Orientation
		9.		9. Inclination of axis
				10. Truncated (if known)
				11. Fill #s
				12. Other comments
				Draw profile overleaf

Type of feature:
Stratigraphic Matrix

			29648								
This context is			29649								
			29601	29594	29641						

Your interpretation: Internal External Structural Other (specify)

Your discussion:

Possible floor which spans squares 266 & 267.
This would have been the floor for Salim Hassan's room.

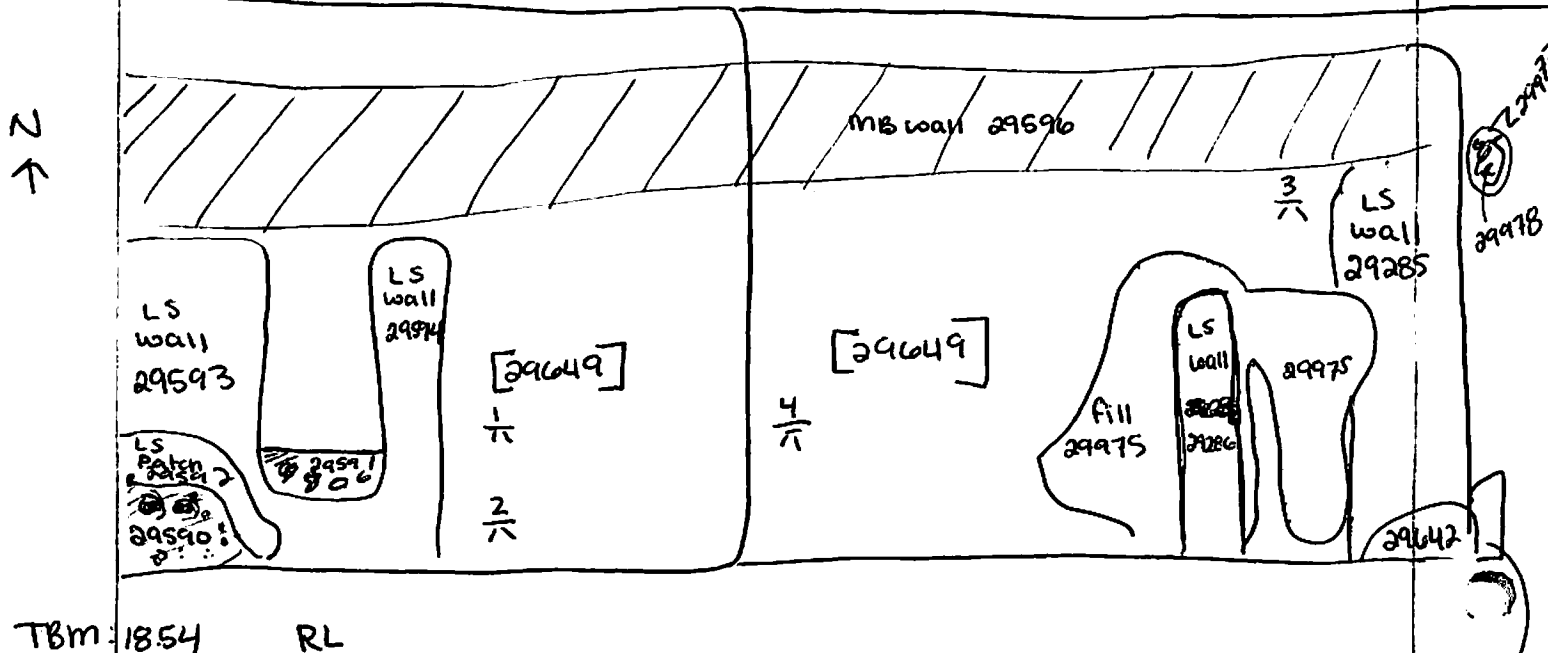
Placement in square

Context same as:	See contexts:	
Site Book Refs:	Matrix phase:	
Initials and date FLW 1.12.08		
Checked Interpretation:		
Provisional period	Group/Phase	Initials and date

Context Number 29649	GPMP
Bag Numbers	
Ceramics	Objects
Environmental Samples & Type	Exotics
Charcoal	
	Other
Bones	
Lithics	
Photographs	510842, 510843 510840

Drawings	
Plans 2008-009 2008-14 2008-010	Sections
Top Elevation 18.06	Bottom Elevations 17.17

Sketch Plan



TBm: 18.54 RL

BS (1-2): 1.64	$\frac{1}{6}$ 17.77	$\frac{3}{6}$ 18.06
BS (3): 2.87		
BS (4): 1.50	$\frac{2}{6}$ 17.72	$\frac{4}{6}$ 17.17

29977
29978
29976