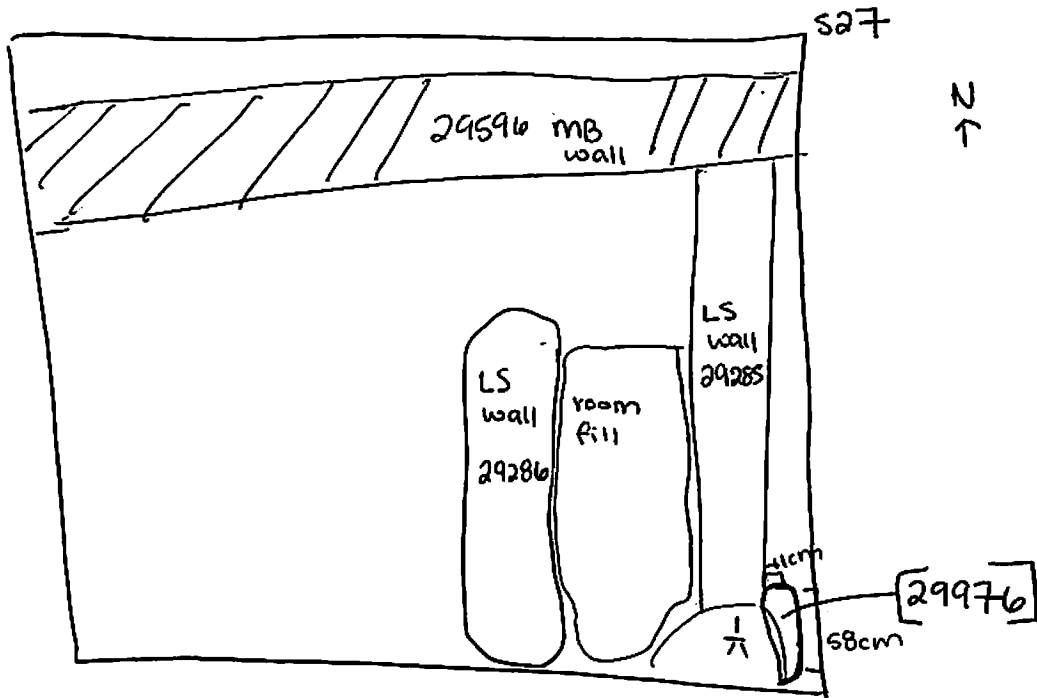


GPMP 2008	GRID SQUARE(S) 101. S27, R27	ARCHITECTURE	CONTEXT 29976
1. Material	1. limestone		
2. Size of materials	2. N/A		
3. Finish	3. N/A		
4. Coursing/bond	4. N/A		
5. Form	5. Threshold		
6. Direction of faces	6. N/A: located against east face of wall [29285]		
7. Orientation	7. before entrance which would have directed		
8. Dimensions	activity east & west within room		
9. Associated collapse	8. 580mm x 110mm (58cm x 11cm)		
10. Founds, cuts & fills	9. 29642		
11. Repaired	10. N/A		
12. Associated floors	11. N/A		
13. Plastered	12. 30434		
14. Wall core	13. N/A		
15. Types of brick (%)	14-17. N/A		
16. Composition of bricks			
17. Dimensions of bricks (sample of three)			
Stratigraphic Matrix	29648 30434 29976 30434	Abuts Abutted by Bonded into Contiguous with	Above Below
INTERPRETATION	Enclosing	Internal	External
Reason for decay	Threshold step made of limestone or possibly		
Indications of original dimensions	degraded mark is on the east face of wall 29285		
Indications of original functions	It is before a patch of fieldstone collapse and backfill but otherwise would have marked an entrance way into the room. Room is 187 of Salim Hassan plan		
Associated contexts:			
Context Same As:			
Drawing Nos: 2008.9			
Photographs (Digital)	Finds		Samples
	Bag No.	Type	
			Building Complex
			Phase
	Site Book Pages	Checked	Initials Date



TBm: 18.54
 BS: 2.87

1/7 : 18.20