

<b>GPMP 2008</b>	<b>GRID SQUARE(S)</b> C1-Q-277	<b>ARCHITECTURE</b>	<b>CONTEXT</b> 29983
------------------	-----------------------------------	---------------------	-------------------------

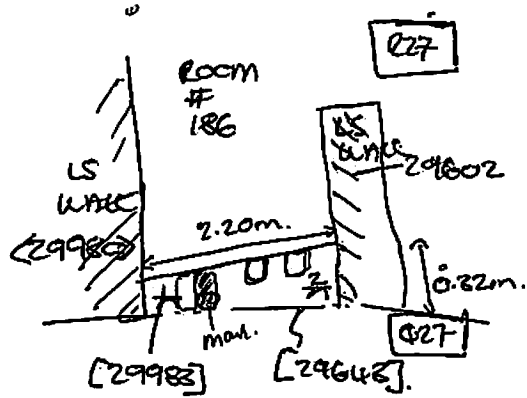
1. Material	(1) SLT (A) + MARL BRICKS (B)
2. Size of materials	(2) -
3. Finish	(3) SQUARED.
4. Coursing/bond	(4) ONLY ONE COURSE VISIBLE IN PLAN.
5. Form	(5) WALL
6. Direction of faces	(6) N + S
7. Orientation	(7) E-W
8. Dimensions	(8) 2.70m (E-W) x 0.82m (N-S) x ? 0.75m (DEEP) (LOSS → BUT BADLY GROWN)
9. Associated collapse	(9) -
10. Founds, cuts & fills	(10) - (11) -
11. Repaired	(12) (29981)
12. Associated floors	(13) -
13. Plastered	(14) - (15) 75% MARL 95% SLT
14. Wall core	(16) (A) = 700mm x 160mm (17) (B) 160mm x 170mm 170mm x 80mm.

<b>Stratigraphic Matrix</b>	Abuts 29602/29980	Above
	Abutted by	Below
	Bonded into	
	Contiguous with	

<b>INTERPRETATION</b>	<b>Enclosing</b>	<b>Internal</b>	<b>External</b>
Reason for decay	MR WALL ABUTTING N-S LC WALLS (29980) +		
Indications of original dimensions	(29602) TO W + E. LOSS TRUNCATED TO		
Indications of original functions	C BY TERRACING CUT (29642) HOWEVER		
BADLY DEGRADED SO LOST TO ENCLOSE SPACE AFTER TRUNCATION. LIES TO S OF SPACE DESIGNATED AS ROOM # 186 BY HASSAN			

Associated contexts:
Context Same As:
Drawing Nos: 2008-16 / 2008-13

Photographs (Digital)	Finds		Samples
	Bag No.	Type	
510940			
101540-542			Building Complex
			Phase
	Site Book Pages	Checked	Initials Date



π	PL
1	17.94
2	17.94