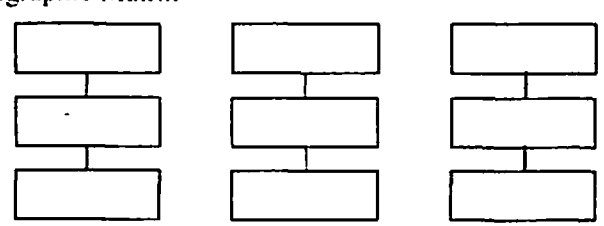
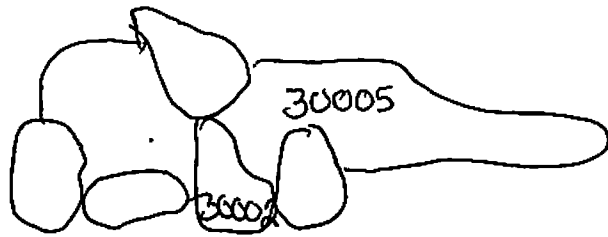


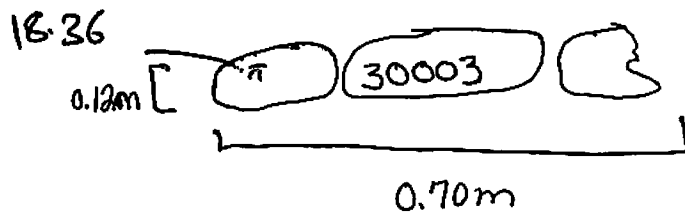
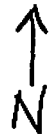
GPMP 2008	GRID SQUARE(S) 101.427	ARCHITECTURE mud brick wall at in	CONTEXT 30008
1. Material 2. Size of materials 3. Finish 4. Coursing/bond 5. Form 6. Direction of faces 7. Orientation 8. Dimensions 9. Associated collapse 10. Founds. cuts & fills 11. Repaired 12. Associated floors 13. Plastered 14. Wall core 15. Types of brick (%) 16. Composition of bricks 17. Dimensions of bricks (sample of three)	1. Mudbrick 2. $\approx 0.20 \times 0.10 \times 0.08$ 3-6. too degraded to identify 7. East-West section 8. $\approx 70\text{cm long} \times 12\text{cm wide}$ 9) - 14) NA 15) MB. 16) Suty clay. 17) $\approx 12 \times 22\text{cm}$		
Stratigraphic Matrix <div style="display: flex; justify-content: space-around; align-items: center;"> <div style="text-align: center;">  </div> <div style="text-align: center;"> <p>Abuts Above</p> <p>Abutted by Below</p> <p>Bonded into</p> <p>Contiguous with</p> </div> </div>			
INTERPRETATION	Enclosing	Internal	External
Reason for decay	<i>Extremely degraded stain of mud bricks running East-West $\approx 70\text{cm}$ South of, and parallel to stone wall 30002 (Core 30005)</i>		
Indications of original dimensions			
Indications of original functions			
Associated contexts:			
Context Same As:			
Drawing Nos: 2008-51			
Photographs (Digital)	Finds		Samples
	Bag No.	Type	
			Building Complex
			Phase
	Site Book Pages	Checked	Initials <i>AEW</i> Date <i>2iv08</i>

Contert 30003.



101.427

29621



GIZA PLATEAU MAPPING PROJECT

Grid Square(s) 101.026-027	Area KKT	Context Type DEPOSIT	Central Coords	Context 3008	
DEPOSIT				CUT	
1. Compaction 2. Colour 3. Composition/Particle Size (Over 10%) 4. Inclusions (Under 10%) occa · mod · freq 5. Thickness and extent 6. Top and bottom boundaries 7. Other comments 8. Method and conditions	1. Light brownish grey Loose 2. Light brownish grey 3. Sandy silt 4. Limestone pebbles → cobbles 5. 90cm x 175cm 6. Clear 7. - 8. dry & light			1. Shape in plan 2. Corners 3. Dimension-Depth 4. Break of slope-top 5. Sides 6. Break of slope-base 7. Base 8. Orientation 9. Inclination of axis 10. Truncated (if known) 11. Fill #s 12. Other comments Draw profile overleaf	
Type of feature:					
Stratigraphic Matrix					
Your interpretation: <i>silt deposit</i>					
Internal External Structural Other (specify)					
Your discussion: <i>This silt deposit is a very thin wash of sediment overlain on the surrounding layers of cultural material and limestone crush.</i>					
Placement in square 					
Context same as:		See contexts:			
Site Book Refs:		Matrix phase:		Initials and date <i>ACW 5iv 08</i>	
Checked Interpretation:					
Provisional period		Group/Phase		Initials and date	

Context Number 30008		GPMP	
Bag Numbers			
Ceramics		Objects	
Environmental Samples & Type		Exotics	
Charcoal			
Bones		Other	
Lithics			
Photographs			
Drawings			
Plans 2008.51		Sections	
Top Elevation 18.40.		Bottom Elevations	
Sketch Plan			