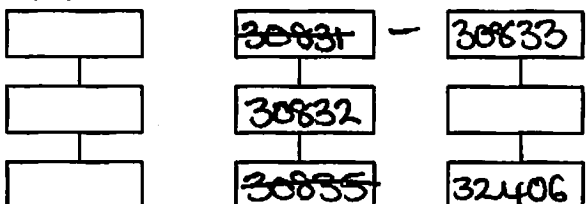


Site: GPMP 2009 Area: KKTE	GRID SQUARE(S) 201-G35 & G36	ARCHITECTURE MUD BRICK STEPS	FEATURE 30832
1. Material	1) MUD BRICK.		
2. Size of materials	2) DIFFICULT TO ASCERTAIN DUE TO DEGRADATION		
3. Finish	ONE CLEAR BRICK MEASURED 38 X 18 CM X 8 CM IN HEIGHT.		
4. Coursing/bond	3) REGULAR PRODUCED BRICKS.		
5. Form	4) NO BONDING MATERIAL VISIBLE.		
6. Direction of faces	5) STEPS.		
7. Orientation	6) N/A		
8. Dimensions	7) EAST / WEST.		
9. Associated collapse	8) SEE SKETCH PLAN OVERLEAF.		
10. Founds, cuts & fills	9) NO ASSOCIATED COLLAPSE + NO TRUNCATIONS VISIBLE		
11. Repaired	10) NONE.		
12. Associated floors	11) NO SIGNS OF REPAIR VISIBLE.		
13. Plastered	12) (30835) & (30846)		
14. Wall core	13) REMAINS (30831).		
15. Types of brick (%)	14) N/A.		
16. Composition of bricks	15) 100% MUD BRICK.		
17. Dimensions of bricks (sample of three)	16) 17)		

Stratigraphic Matrix	Abuts 29050, 29047	Above (30835)
	Abutted by	Below (30831)
	Bonded into	WALLS (29050) & (29047) ✓
	Contiguous with	

INTERPRETATION	Enclosing	Internal	External
Reason for decay	FEATURE UNEXCAVATED		
Indications of original dimensions	SERIES OF MUD BRICK STEPS LEADING UP FROM		
Indications of original functions	FLOOR (30835) TO FLOOR SURFACE (30823) & DOORWAY BETWEEN WALLS (29050) & (29047). THE CENTRAL SURFACE OF EACH STEP IS CONCAVED TO VARYING DEGREES DUE TO WEAR. MARL RENDERED ALONG SOUTH ^{FACING} ELEVATION (30833). THE STRUCTURE ABUTS THE MARL SURFACE TREATMENTS ON (29048) ON WALL (29047) & (30811) = (29052) ON WALL (29050) AND IS ABOVE FLOOR SURFACE (30846)		
Associated contexts:	(30833) MARL RENDERING (30831) REMAINS OF PLASTER ON STEPS. (30835) FLOOR SURFACE. (30829) POTTERY RICH LAYER		
Context Same As:			
Drawing Nos:	P30832 x2, 2009-339, 2009-349.		

Photographs (feature in plan, elevation, materials used, surface treatment e.g. plaster, paint etc.)		Finds		Samples (flotation, wet sieve, materials used e.g. bricks, stone, wood, bonding material etc.)	
Photograph No.	Description	Bag No.	Description	Bag No.	Description
511755	WEST				
511756	N WEST.				
		Phase:	5/gr. 9718	Checked	Initials DCJ Date 18/02/09

Digitized

(30832)

Sketch Drawings (in plan and in profile)

Remember: do not just draw the architectural feature in isolation. Show how it relates to surrounding features and include details of surface treatments, repairs/modifications/damage, bonding material(s), and associated cuts. Annotate all aspects of the feature or use a Drawing Key. Measurements must be included for all aspects of the feature and surrounding features.

Sketch Plan - Include grid co-ordinates, North arrow, and elevations.

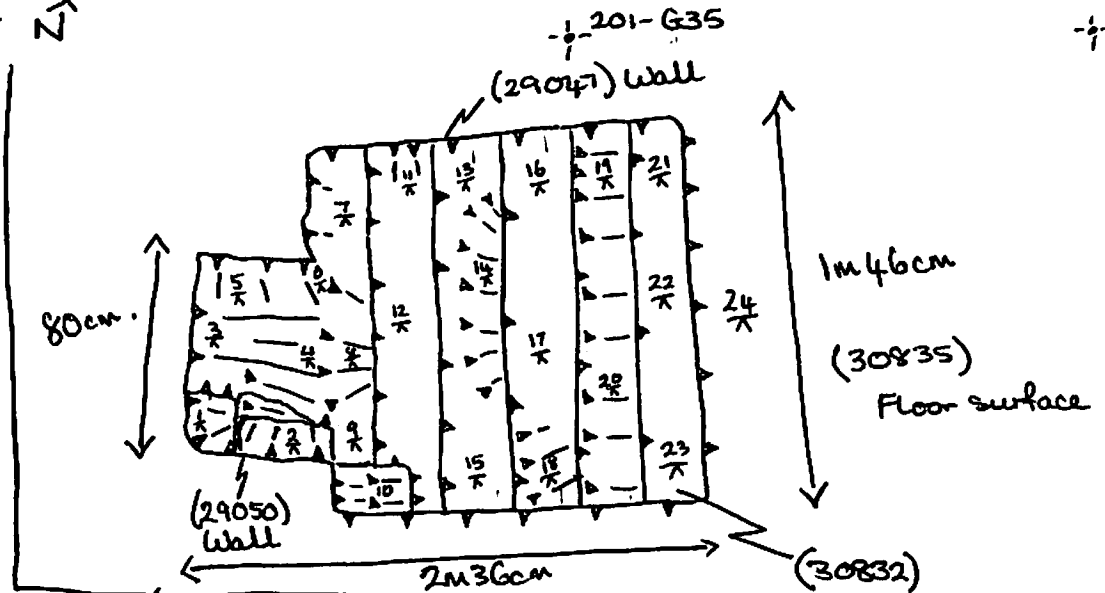
NOT TO SCALE

TBM: 17.70

BS: 0.97

I.H.: 18.67

FS	EL	
1	1.17	17.50
2	1.23	17.44
3	1.16	17.51
4	1.31	17.36
5	1.08	17.59
6	1.18	17.49
7	1.31	17.36
8	1.36	17.31
9	1.35	17.32
10	1.38	17.29
11	1.40	17.27
12	1.47	17.20
13	1.53	17.14
14	1.61	17.06
15	1.59	17.08



FS	EL	FS	EL		
16	1.62	17.05	20	1.82	16.85
17	1.70	16.97	21	1.85	16.82
18	1.72	16.95	22	1.90	16.77
19	1.74	16.93	23	1.91	16.76
			24	1.99	16.68

Profile Sketch

- State direction the elevation of the feature being drawn is facing e.g. 'West Facing Elevation of Feature
- If feature was drawn in section then include the grid co-ordinates and elevations.

