

Site: GPMP 03 Area: KKI-E	GRID SQUARE(S) 201.426	ARCHITECTURE	FEATURE 30891
1. Material	1. mud bricks		
2. Size of materials	2. 30cm x 16cm x 8cm		
3. Finish	3. -		
4. Coursing/bond	4. feature exposed only in plan and very partially		
5. Form	in section (where it is seen bonded		
6. Direction of faces	with 30886); in plan shows rather		
7. Orientation	roughly oriented mudbricks - the visible		
8. Dimensions	part is integrated to the S and N		
9. Associated collapse	side show some regularity with headers		
10. Foundations & fills	(4 observed) laid next to each other.		
11. Repaired	5. it's most likely base part of a blocking feature		
12. Associated floors	6. N/E 7. W/E 8. 1.75m(E/W) x ca. 1.5m(N/S); thickness of exposed		
13. Plastered	part: ca. 0.25m 9. unknown 10. - 11. - 12. - 13. - 30891 -		
14. Wall core	14. - 15. mudbricks 16. silty clay		
15. Types of brick (%)	17. see ②.		
16. Composition of bricks			
17. Dimensions of bricks (sample of three)			

Stratigraphic Matrix		30890	Abuts 30884, 29068	Above 30900 30900
	30890	30890	Abutted by 29067	Below 30891 30890
	30891	30886	Bonded into 30886	
	30884	30900	Contiguous with 30886?	

INTERPRETATION	Enclosing	Internal	External
Reason for decay	This feature is essentially sound as 30886		
Indications of original dimensions	it is the horizontal part of the blocking		
Indications of original functions	feature built in entrance between 29068 and		
29062; has not been excavated; just partially excavated;			
its E. limit is unknown; it			
some bricks appear reused as they have mud plaster			
on their sides; feature truncated by [30867] and			
later by [30826]			
Associated contexts:	30884, 30886, 30884		

Context Same As: 30886
Drawing Nos: 2009-56, 30891, 2009-351

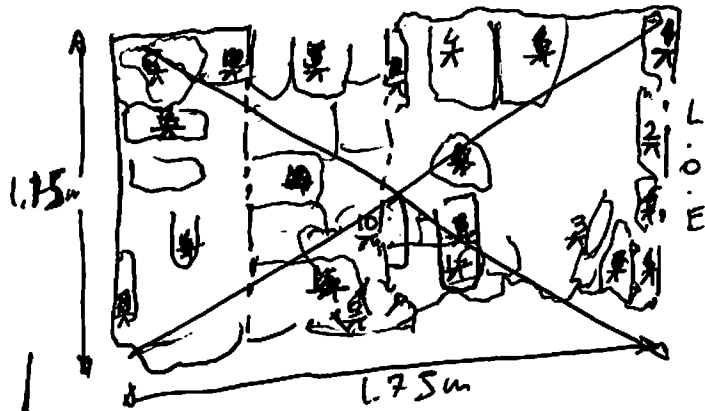
Photographs (feature in plan, elevation, materials used, surface treatment e.g. plaster, paint etc.)		Finds		Samples (flotation, wet sieve, materials used e.g. bricks, stone, wood, bonding material etc.)	
Photograph No.	Description	Bag No.	Description	Bag No.	Description
511923					
511924					
		Phase:	IV/Gr. 9712	Checked	Initials no Date 24/01/09

Sketch Drawings (in plan and in profile)

Remember: do not just draw the architectural feature in isolation. Show how it relates to surrounding features and include details of surface treatments, repairs/modifications/damage, bonding material(s), and associated cuts. Annotate all aspects of the feature or use a Drawing Key. Measurements must be included for all aspects of the feature and surrounding features.

Sketch Plan - Include grid co-ordinates, North arrow, and elevations.

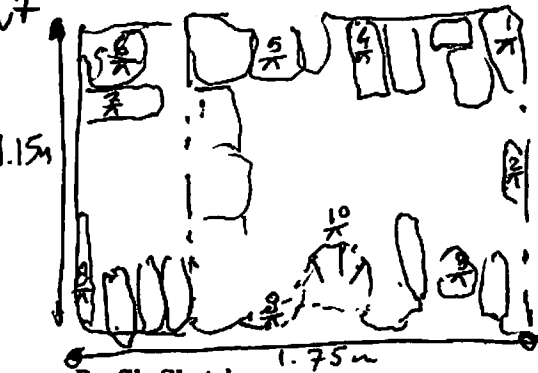
201.436



BM 17.70

BS
14

1.2.73	18.20
2.2.73	18.14
3.2.82	18.06
4.2.83	18.10
5.2.93	18.00
6.2.62	18.26
7.2.83	18.10
8.2.73	18.15
9.2.98	17.95
10.2.94	17.98



Profile Sketch

- State direction the elevation of the feature being drawn is facing e.g. 'West Facing Elevation of Feature ...'
- If feature was drawn in section then include the grid co-ordinates and elevations.

