

Site: GPMP Area: KKT-AE	GRID SQUARE(S) 101-Q24	ARCHITECTURE	FEATURE 30946
1. Material	1, Mud brick		
2. Size of materials	2, -		
3. Finish	3, -		
4. Coursing/bond	4, headers & stretchers mixed, <del>3, -</del> , <del>4, -</del> on side		
5. Form	5, Joggled wall		
6. Direction of faces	6, <del>S, E, W</del>		
7. Orientation	7, Wall is N-S, <del>Plan shows a Orientation E-W</del>		
8. Dimensions	8, <del>2m x 1.80 x 7cm</del> 1.10 x 42 x .03		
9. Associated collapse	9, -		
10. Founds, cuts & fills	10, -		
11. Repaired	11, -		
12. Associated floors	12, -		
13. Plastered	13, -		
14. Wall core	14, -		
15. Types of brick (%)	14, mud brick		
16. Composition of bricks	15, large (ie. royal size)		
17. Dimensions of bricks (sample of three)	16, Nite size 17, 40 x 20 x ? cm <del>30 x 22 x 7 cm</del>		

Stratigraphic Matrix	Abuts	Above
	Abutted by	30948 Below
	Bonded into	
	Contiguous with	

INTERPRETATION	Enclosing	Internal	External
Reason for decay	<del>Reason for decay with 30946</del>		
Indications of original dimensions	N-S wall on road/ramp, clearly a later addition		
Indications of original functions			

Associated contexts:

Context Same As:

Drawing Nos: 2009-67, 2009-74

Photographs (feature in plan, elevation, materials used, surface treatment e.g. plaster, paint etc.)		Finds		Samples (flotation, wet sieve, materials used e.g. bricks, stone, wood, bonding material etc.)	
Photograph No.	Description	Bag No.	Description	Bag No.	Description
pic ex JPR					

Phase: \_\_\_\_\_

Checked: \_\_\_\_\_

Initials: RL

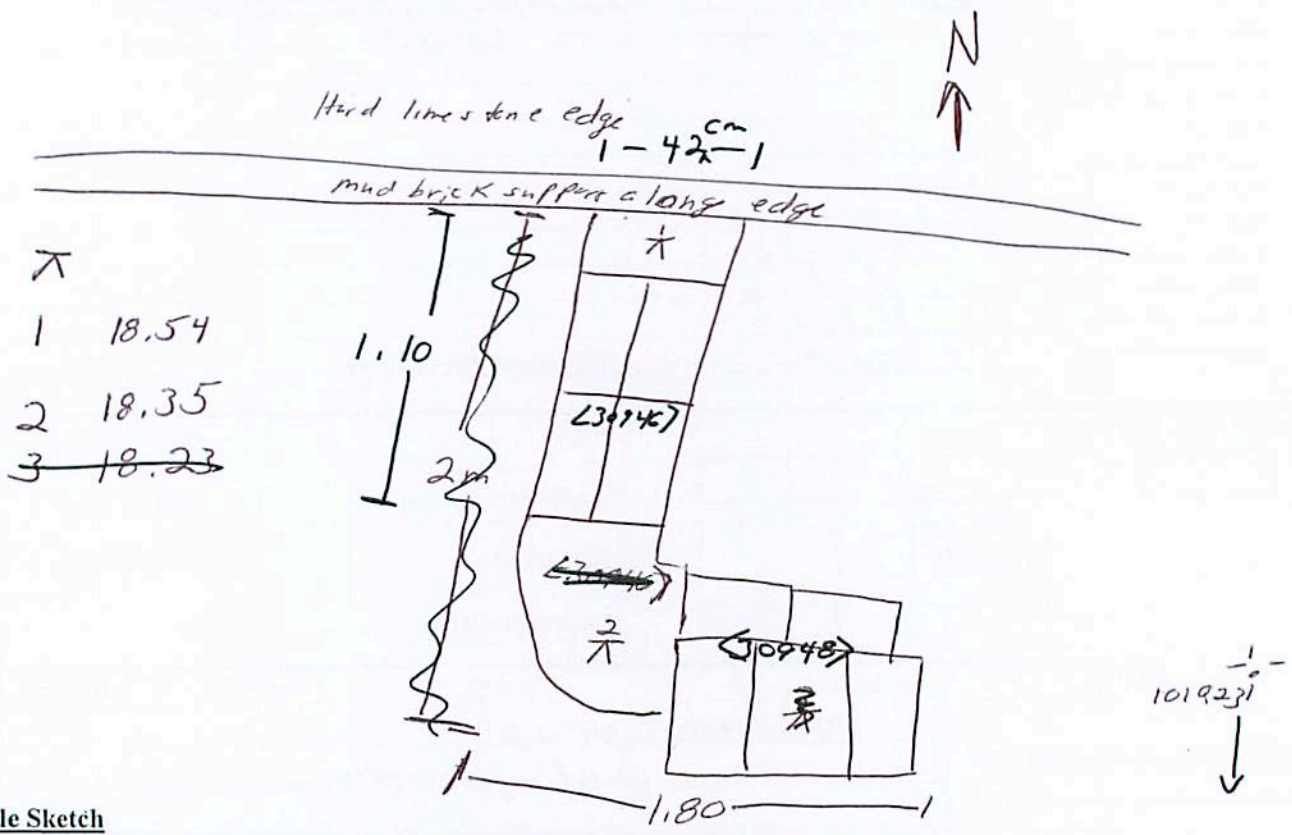
Date: 18/10/09

1019241

**Sketch Drawings (in plan and in profile)**

Remember: do not just draw the architectural feature in isolation. Show how it relates to surrounding features and include details of surface treatments, repairs/modifications/damage, bonding material(s), and associated cuts. Annotate all aspects of the feature or use a Drawing Key. Measurements must be included for all aspects of the feature and surrounding features.

Sketch Plan - Include grid co-ordinates, North arrow, and elevations.



**Profile Sketch**

- State direction the elevation of the feature being drawn is facing e.g. 'West Facing Elevation of Feature ....
- If feature was drawn in section then include the grid co-ordinates and elevations.