

Site: GPMP Area: KKAY	GRID SQUARE(S) 101523	ARCHITECTURE	FEATURE 30967
---------------------------------	---------------------------------	--------------	-------------------------

1. Material	1, mud brick
2. Size of materials	2, .30 x .17 x ?
3. Finish	3, —
4. Coursing/bond	4, 1 course of headers on their beds turns 90° at the corner
5. Form	5, mud brick wall which turns
6. Direction of faces	6, east-west brick face south / N-S brick face west
7. Orientation	7, East-west then turn then N-S
8. Dimensions	8, .57 x .38 x ? / turn .60 x .40 x ?
9. Associated collapse	9, —
10. Founds, cuts & fills	10, —
11. Repaired	11, —
12. Associated floors	12, —
13. Plastered	13, —
14. Wall core	14, —
15. Types of brick (%)	15, 100% mud brick structure
16. Composition of bricks	16, Nile silt with x 20% sand
17. Dimensions of bricks (sample of three)	17, .28 x .18 x ? / .35 x .19 x ? / .36 x .19 x ?

Stratigraphic Matrix			Abuts	Above
<input type="checkbox"/>	<input type="checkbox" value="30970"/>	<input type="checkbox"/>	Abutted by	Below
<input type="checkbox"/>	<input type="checkbox" value="30967"/>	<input type="checkbox"/>	Bonded into	
<input type="checkbox" value="30964"/>	<input type="checkbox" value="30969"/>	<input type="checkbox"/>	Contiguous with	30965/66/68

INTERPRETATION	Enclosing	<u>Internal</u>	External
Reason for decay	mud brick on second terrace of basin		
Indications of original dimensions	The turn to include the N-S bricks can only		
Indications of original functions	faintly be seen on the limestone. Parts are very damaged		

Associated contexts:

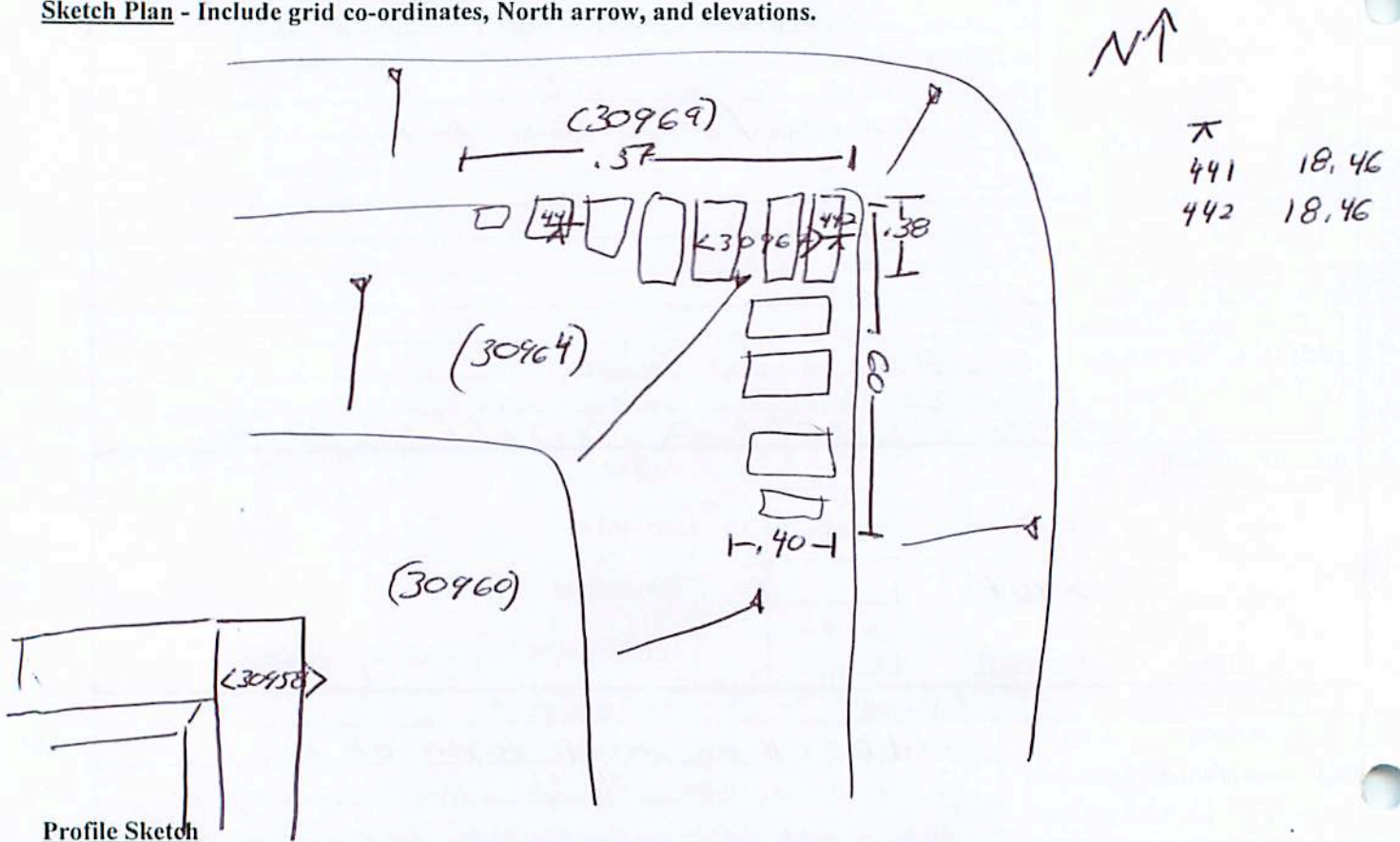
Context Same As: **30965, 30966, 30968**
 Drawing Nos: **2009-67, 2009-153, 260, 153**

Photographs (feature in plan, elevation, materials used, surface treatment e.g. plaster, paint etc.)		Finds		Samples (flotation, wet sieve, materials used e.g. bricks, stone, wood, bonding material etc.)	
		Bag No.	Description	Bag No.	Description
Photograph No.	Description				
		Phase:		Checked	Initials S.M.O.G. Date

Sketch Drawings (in plan and in profile)

Remember: do not just draw the architectural feature in isolation. Show how it relates to surrounding features and include details of surface treatments, repairs/modifications/damage, bonding material(s), and associated cuts. Annotate all aspects of the feature or use a Drawing Key. Measurements must be included for all aspects of the feature and surrounding features.

Sketch Plan - Include grid co-ordinates, North arrow, and elevations.



Profile Sketch

- State direction the elevation of the feature being drawn is facing e.g. 'West Facing Elevation of Feature
- If feature was drawn in section then include the grid co-ordinates and elevations.