

Site: GPMP 2009 Area: KICT-N	GRID SQUARE(S) 201-F20	ARCHITECTURE	FEATURE 31092
1. Material	1/. MUDBRICK		
2. Size of materials	2/. - 3/. -		
3. Finish			
4. Coursing/bond	4/. 4 COURSES OF BRICKS LAYED AS TWO ROWS OF SUBSTITUTIONS WITH ALTERNATE COURSE OF TWO ROWS OF STRETCHERS		
5. Form			
6. Direction of faces	5/. N-S WITH INTERNAL DIVIDING WALL		
7. Orientation	6/. E/W		
8. Dimensions	7/. N-S		
9. Associated collapse	8/. LENGTH=3.85m; WIDTH=0.36m; HEIGHT=0.25m		
10. Finds, cuts & fills	9/. - 10/. - 11/. 12/. <del>BRICK</del> EXPOSURE PLINY		
11. Repaired	12/. NO		
12. Associated floors	14/. - 15/. 100% NILE CLAY		
13. Plastered	16/. <del>RED</del> MUD BRICK SLIPY CLAY		
14. Wall core	17/. <del>BRICK</del> 290-300mm x 160-180mm x 100mm		
15. Types of brick (%)			
16. Composition of bricks			
17. Dimensions of bricks (sample of three)			

Stratigraphic Matrix	Abuts 31091, 31081	Above
	Abutted by	Below
	Bonded into	
	Contiguous with	

INTERPRETATION	Enclosing	Internal	External
Reason for decay	WALL OF NILE CLAY BUT A LARGER WALL USED TO		
Indications of original dimensions	BLACK SPACE TO EAST OF ROOM 72. THIS MAY		
Indications of original functions	HAVE BEEN CLOSED AT THE SAME TIME AS DOOR		
BLOCKING 31129 AND THE BLOCKING OF THE TWO ENTRANCES INTO BUILDING E			
FROM THE NORTH. THIS WOULD HAVE LEFT THE ROOMS IN THE NW CORNER			
COMPLETELY BLOCKED OFF AND THIS PART OF THE BUILDING MAY HAVE GONE			
INTO DISUSE AT THIS TIME.			

Associated contexts: (31129)

Context Same As: /

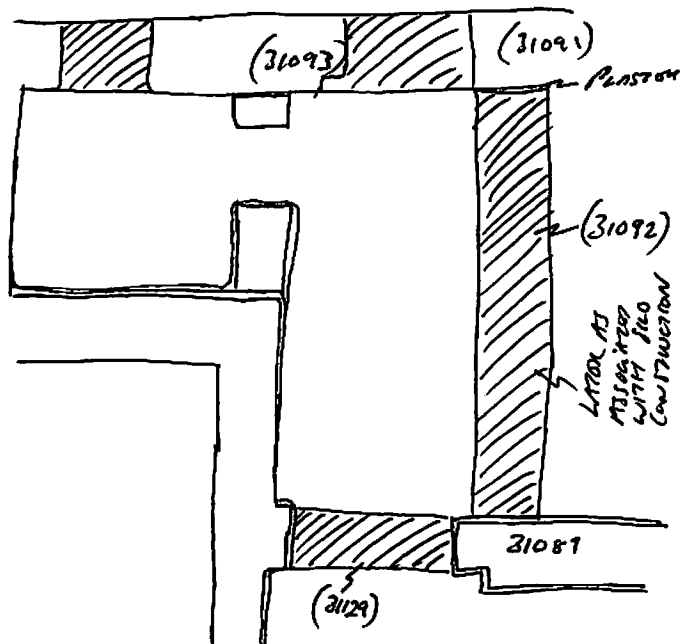
Drawing Nos: 31092, 2009-95


Photographs (feature in plan, elevation, materials used, surface treatment e.g. plaster, paint etc.)		Finds		Samples (flotation, wet sieve, materials used e.g. bricks, stone, wood, bonding material etc.)	
Photograph No.	Description	Bag No.	Description	Bag No.	Description
306105	S FRANK				
306106	S FRANK				
		Phase:	5c	Checked	Initials LMY Date 17ii'09

### Sketch Drawings (in plan and in profile)

Remember: do not just draw the architectural feature in isolation. Show how it relates to surrounding features and include details of surface treatments, repairs/modifications/damage, bonding material(s), and associated cuts. Annotate all aspects of the feature or use a Drawing Key. Measurements must be included for all aspects of the feature and surrounding features.

Sketch Plan - Include grid co-ordinates, North arrow, and elevations.



 = PARTIALLY CONSTRUCTION AT SAME TIME TO BACK OF NW CORNER OF BUILDING E

### Profile Sketch

- State direction the elevation of the feature being drawn is facing e.g. 'West Facing Elevation of Feature ...
- If feature was drawn in section then include the grid co-ordinates and elevations.