

Site: GPMP 2009 Area: NKT-N	GRID SQUARE(S) 201-C20	ARCHITECTURE	FEATURE 31878
1. Material	1. mud Brick		
2. Size of materials	2. 800mm x 160mm x 1300 mm		
3. Finish	3. —		
4. Coursing/bond	4. Three courses of stretchers		
5. Form	5. slightly silty sand		
6. Direction of faces	6. see small fragm of pottery sherd, see charcoal flecks		
7. Orientation	7. wall		
8. Dimensions	8. N-S 7. E-W		
9. Associated collapse	9. 4. 34m (E-W) x 1.14m (N-S) x 0.40m depth		
10. Founds, cuts & fills	10. (31875) ? (31877)		
11. Repaired	11. No?		
12. Associated floors	12. No		
13. Plastered	13. (31877, 31875)		
14. Wall core	14. (31877)		
15. Types of brick (%)	15. No		
16. Composition of bricks	16. 100% mud Brick		
17. Dimensions of bricks (sample of three)	17. silty sand & limestone frag, freq small pebble not excavated		

Stratigraphic Matrix			Abuts	Above
	31899		Abutted by	Below
	31878		Bonded into	
	32026		Contiguous with	

INTERPRETATION	Enclosing	Internal	External
Reason for decay	E-W mud Brick wall this the southern		
Indications of original dimensions	wall of the Cause way which might be repaired		
Indications of original functions	by (31899) or this were blocked by large limestone rubble, the wall not exposed completely and only excavated in 1m sondage.		
	The wall setting on Bedding layer of silty sand very similar to the wall itself.		

Associated contexts:

Context Same As:

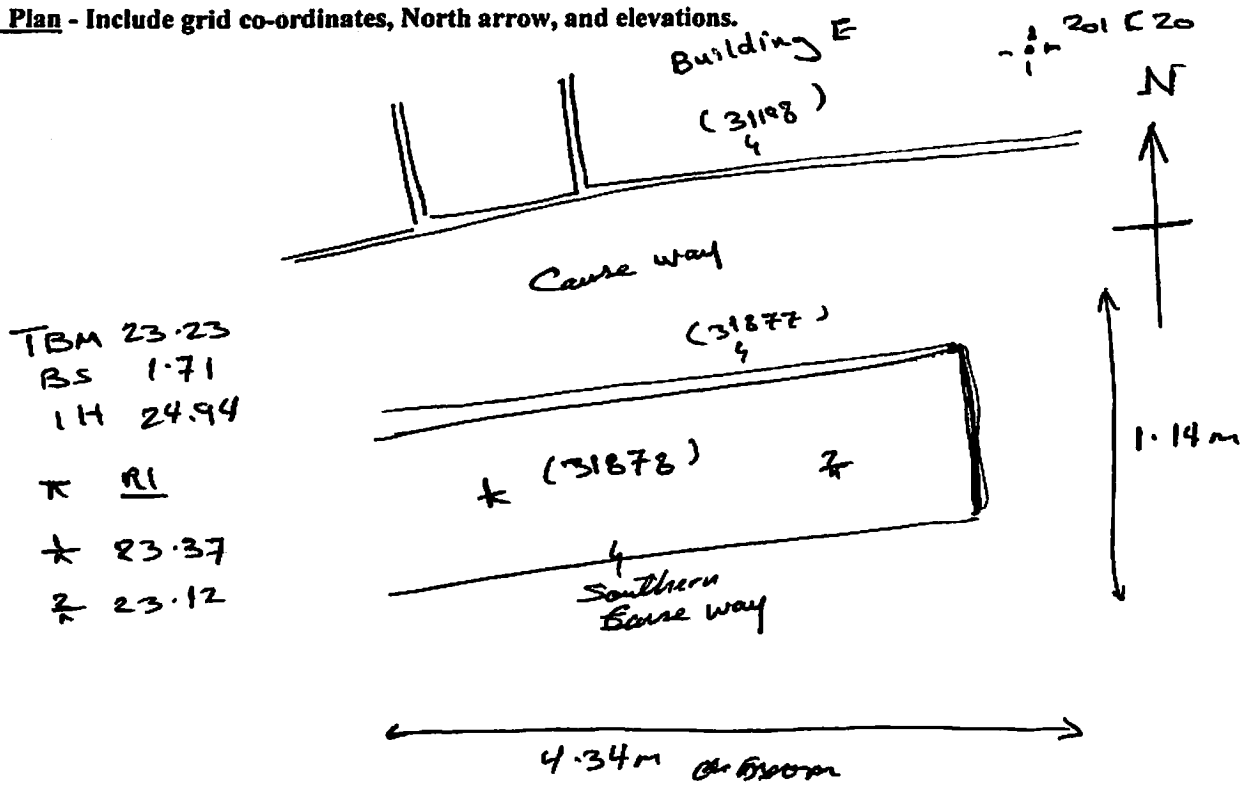
Drawing Nos: **2009-173, (2009-149 section)**

Photographs (feature in plan, elevation, materials used, surface treatment e.g. plaster, paint etc.)		Finds		Samples (flotation, wet sieve, materials used e.g. bricks, stone, wood, bonding material etc.)	
Photograph No.	Description	Bag No.	Description	Bag No.	Description
		Phase:	5b/Matrix top 9749	Checked	Initials HMM Date 3 III 09

Sketch Drawings (in plan and in profile)

Remember: do not just draw the architectural feature in isolation. Show how it relates to surrounding features and include details of surface treatments, repairs/modifications/damage, bonding material(s), and associated cuts. Annotate all aspects of the feature or use a Drawing Key. Measurements must be included for all aspects of the feature and surrounding features.

Sketch Plan - Include grid co-ordinates, North arrow, and elevations.



Profile Sketch

- State direction the elevation of the feature being drawn is facing e.g. 'West Facing Elevation of Feature
- If feature was drawn in section then include the grid co-ordinates and elevations.