

DB

Site: GPMP Area: KKT A1	GRID SQUARE(S) 101 S22	ARCHITECTURE	FEATURE 32461
1. Material	1, mud brick		
2. Size of materials	2, north = .38 x .19 x .10 / west = .20 x .13 x .07		
3. Finish	3, —		
4. Coursing/bond	4, NW - 3 courses of stretchers on their beds 2 deep		
5. Form	W wall - 4 courses alternating headers + stretchers		
6. Direction of faces	5, wall enclosing basin		
7. Orientation	6, south + east		
8. Dimensions	7, E-W + N-S		
9. Associated collapse	8, west side: 7.20 x .45 / North side 2.70 x .57		
10. Foundations & fills	9, — 10, — 11, — 12 — 13 — 14 —		
11. Repaired	15, 100% mud brick		
12. Associated floors	16, Nile silt (100% on North), Nile silt + sand (70% / 30%)		
13. Plastered	17, N = .38 x .19 x .10 / .35 x .19 x .14 on west		
14. Wall core	W = .22 x .12 x .07 / .22 x .14 x .? / .24 x .13 x .09		
15. Types of brick (%)			
16. Composition of bricks			
17. Dimensions of bricks (sample of three)			

Stratigraphic Matrix			Abuts	Above
	32462		Abutted by	32462 Below
	32461		Bonded into	
	29813		Contiguous with	

INTERPRETATION	Enclosing	Internal	External
Reason for decay	mud brick wall enclosing basin structure. Height is preserved in the 101-S22 / NW corner. These may be 2 contents but were lumped together as one.		
Indications of original dimensions	Large bricks were used on the north side, but small bricks on the west side. The north side is abutted by the west side.		
Indications of original functions			

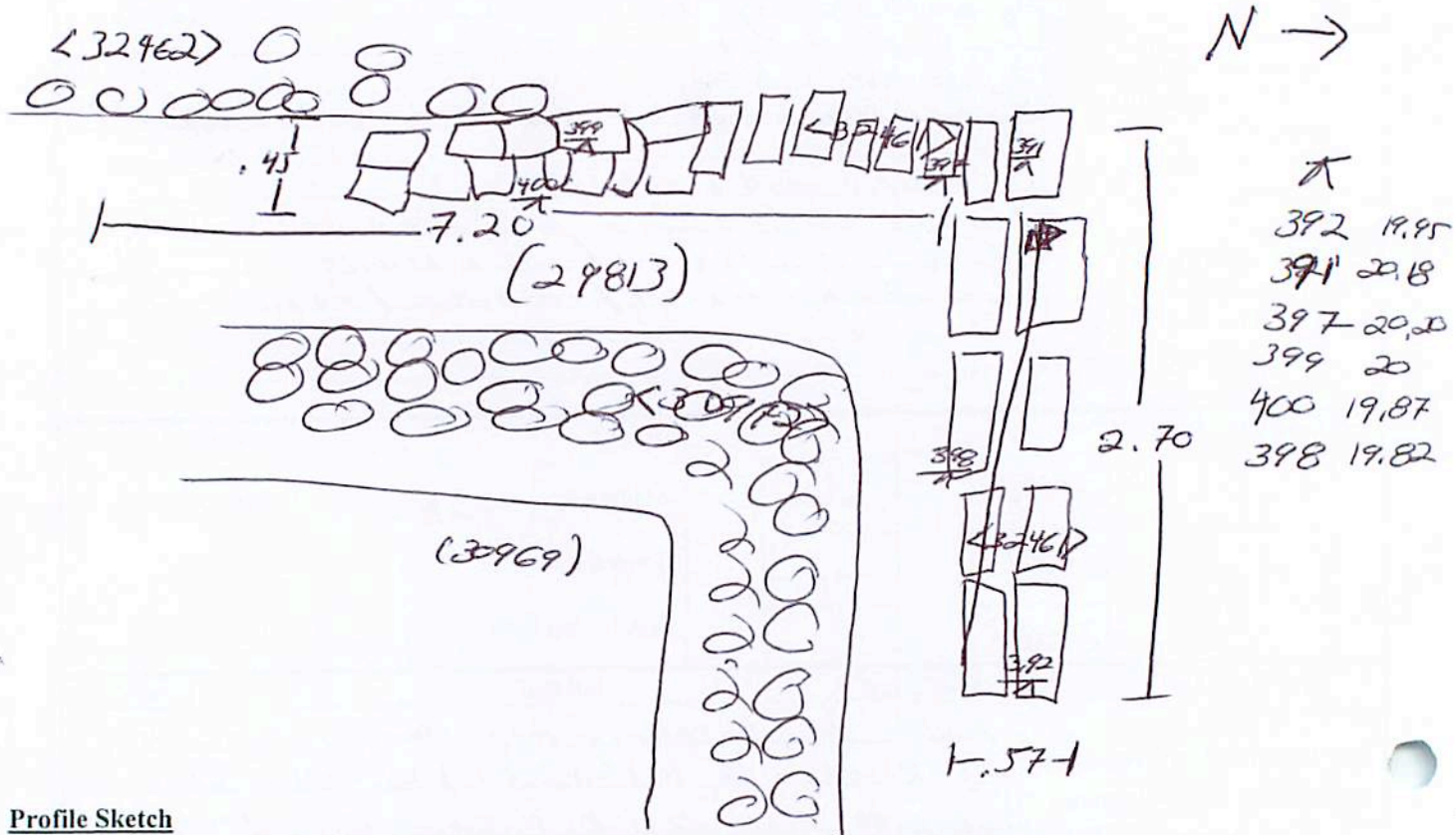
Associated contexts:
Context Same As:
Drawing Nos: 2009 67, 2009-~~256, 260~~ 256, 260

Photographs (feature in plan, elevation, materials used, surface treatment e.g. plaster, paint etc.)	Finds		Samples (flotation, wet sieve, materials used e.g. bricks, stone, wood, bonding material etc.)	
	Bag No.	Description	Bag No.	Description
Photograph No. Description				
306533-				
306537				
JPR				
	Phase:		Checked	Initials KL Date 31/11/09

Sketch Drawings (in plan and in profile)

Remember: do not just draw the architectural feature in isolation. Show how it relates to surrounding features and include details of surface treatments, repairs/modifications/damage, bonding material(s), and associated cuts. Annotate all aspects of the feature or use a Drawing Key. Measurements must be included for all aspects of the feature and surrounding features.

Sketch Plan - Include grid co-ordinates, North arrow, and elevations.



Profile Sketch

- State direction the elevation of the feature being drawn is facing e.g. 'West Facing Elevation of Feature
- If feature was drawn in section then include the grid co-ordinates and elevations.