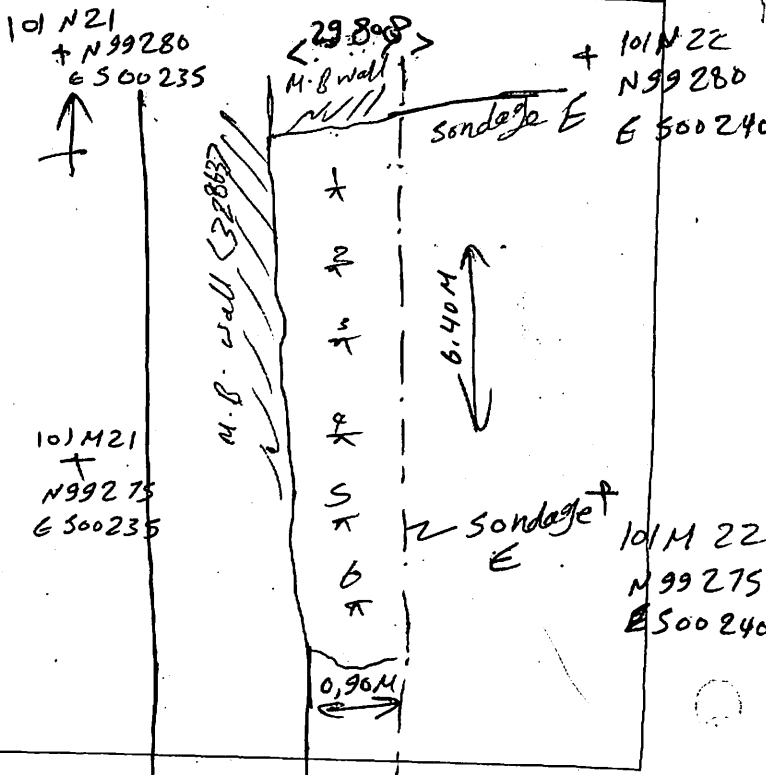


GIZA PLATEAU MAPPING PROJECT

Grid Square(s) 101 M 22-101N 22	Area MUT 6	Context Type <i>deposit</i>	Central Coords	Context 32779
DEPOSIT				CUT
1. Compaction	<i>1 - Med</i>			1. Shape in plan
2. Colour	<i>2 - Brownish grey</i>			2. Corners
3. Composition/Particle Size (Over 10%)	<i>3 - 80% mud brick collapse, 20% sand</i>			3. Dimension/Depth
4. Inclusions (Under 10%) occa / mod / freq	<i>4. very occa Pottery shreds, occa Ash</i>			4. Break of slope-top
5. Thickness and extent	<i>5 - 6.40 M length x 0.90 M width x 2.8 M thick</i>			5. Sides
6. Top and bottom boundaries	<i>6 - Clear</i>			6. Break of slope-base
7. Other comments	<i>7 -</i>			7. Base
8. Method and conditions	<i>8 - ^{south} Axe and trowels - sunny</i>			8. Orientation
				9. Inclination of axis
				10. Truncated (if known)
				11. Fill #s
				12. Other comments Draw profile overleaf
Type of feature: <i>M.B. Collapse</i>				
Stratigraphic Matrix				
This context is	32775	32779	32781	32782
Your interpretation: Internal External Structural Other (specify)				
Your discussion:				
<p><i>Mud brick Collapse mixed with sand lenses in sondage E</i></p> <p><i>May be mud brick collapse fall down from the wall (32863)</i></p> <p><i>which represent the Abandonment post-^{Hassan} Riesner excavation</i></p> <p><i>but the mud bricks in the south of the sondage</i></p> <p><i>with fire marks</i></p>				
Context same as:		See contexts:		
Site Book Refs:		Matrix phase:		Initials and date <i>MAR 29 2012</i>
Checked Interpretation:				
Provisional period		Group/Phase		Initials and date <i>J. 11/12</i>

Context Number 32779		GPMP MUF E 2012	
Bag Numbers			
Ceramics		Objects	
2012-377		2012-373 (worked sandstone)	
		2012-378 (mud sealing)	
		2012-401 (object ?)	
Environmental Samples & Type		Exotics	
(2012-380) - (381) (2012-382)			
(2012-400) w/s = 2012-383 - 388			
Charcoal		2012-417	
2012-389		Other	
Bones		mud sealing	
2012-379		from 2012-388 wet sieve	
Lithics		to 2012-387	
2012-388			
Photographs			
512533			
512534			
512535			
Drawings			
Plans		Sections	
P# 32779			
Top Elevation 18.57 MASL		Bottom Elevations 18.29 MASL	
Sketch Plan			

TBM 19.75
 B.S .72
 loc 20.47
 ES RL
 1 2.02 18.45
 2 1.90 18.57
 3 2.20 18.37
 4 2.18 18.29
 5 2.08 18.39
 6 2.12 18.35



T 101-L21
 N99276
 E500235

T 101L22
 N99270
 E500240