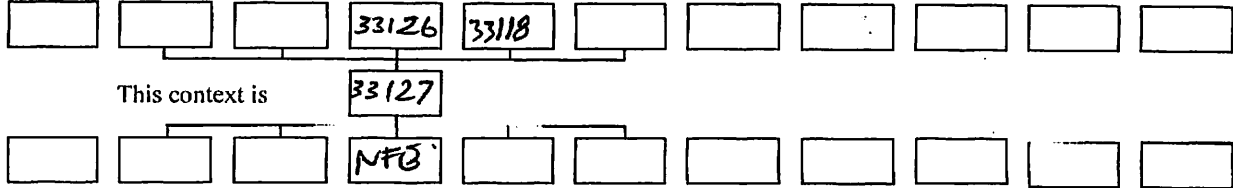


GIZA PLATEAU MAPPING PROJECT

Grid Square(s) M 22 101N22	Area MVT-E	Context Type deposit	Central Coords	Context 33127
DEPOSIT		1- Mod	CUT	
1. Compaction		2- very dark grey	1. Shape in plan	
2. Colour		3- Clay 70% - sand 30%	2. Corners	
3. Composition/Particle Size (Over 10%)		4- _____	3. Dimension/Depth	
4. Inclusions (Under 10%) occa / mod / freq		5- 3.10M length x 0.178M width x unknown THICKNESS	4. Break of slope-top	
5. Thickness and extent		6- clear	5. Sides	
6. Top and bottom boundaries		7- _____	6. Break of slope-base	
7. Other comments		8- _____ sunny	7. Base	
8. Method and conditions			8. Orientation	
			9. Inclination of axis	
			10. Truncated (if known)	
			11. Fill #s	
			12. Other comments	
			Draw profile overleaf	

Type of feature: **Sandy clay floor in space 11205**

Stratigraphic Matrix



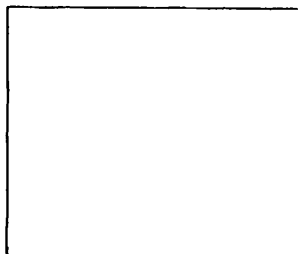
Your interpretation: Internal External Structural Other (specify)

Your discussion:

not excavated
the sandy clay floor of space 11205 may be represented
the later floor

- CONTINUES BELOW LC THRESHOLD (33126)
- R N. + BELOW B CUT
- CUT IN FIN.

Placement in square



Context same as:	See contexts:	
Site Book Refs:	Matrix phase:	Initials and date AMAG 2 II 2012
Checked Interpretation:		
Provisional period	Group/Phase	Initials and date 12 ii 12 cf.

Context Number 33127 GPMP MVT-E 2012

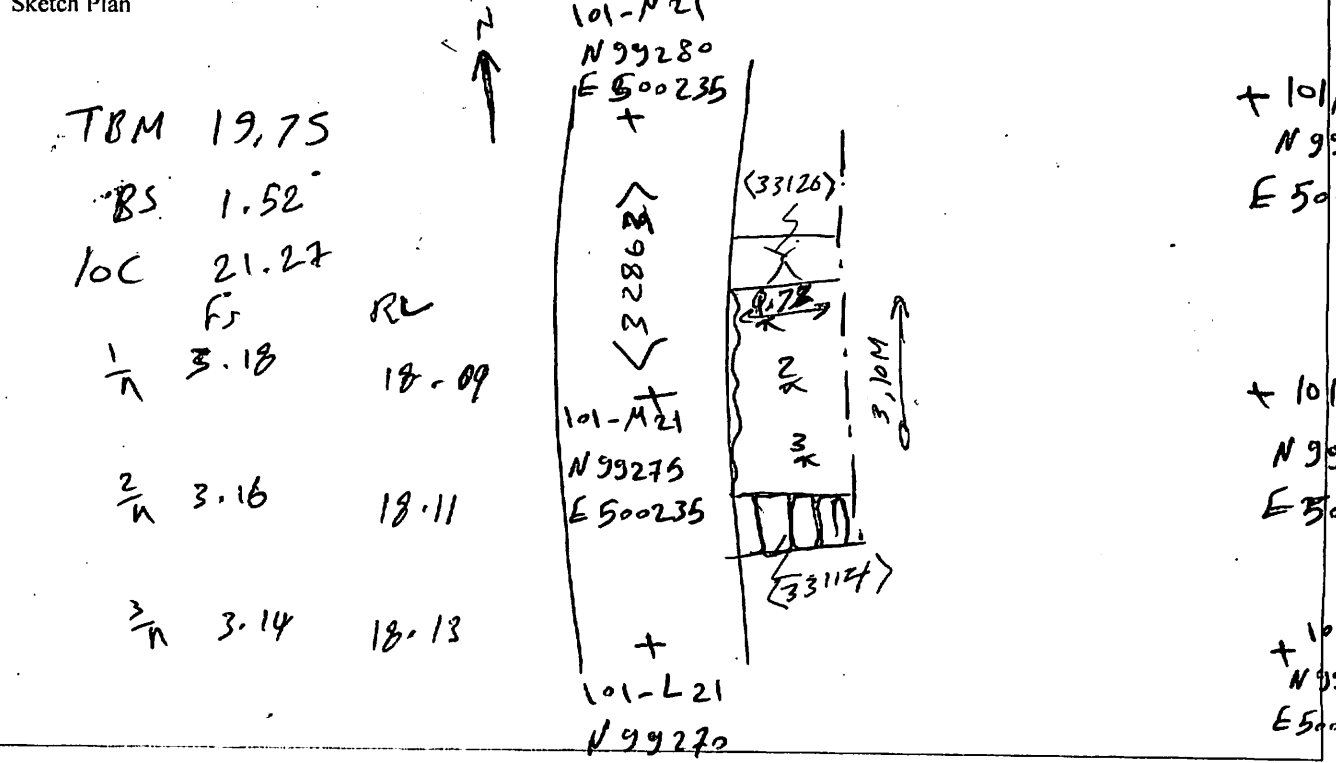
Bag Numbers

Ceramics	Objects
Environmental Samples & Type	Exotics
Charcoal	Other
Bones	
Lithics	

Photographs
512704, 705-706

Drawings

Plans	Sections
Top Elevation	Bottom Elevations



E 500235