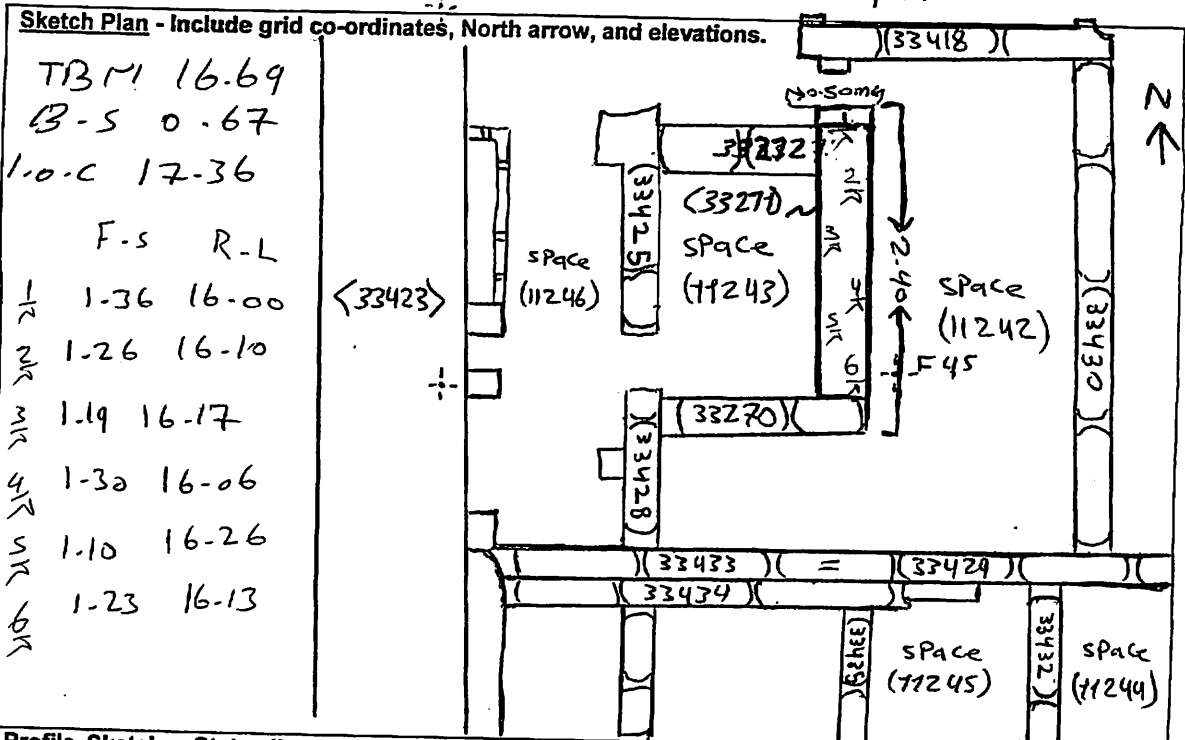


AREA: <i>W1-E1</i>	GRID SQUARE (S): <i>F, G 45</i>	GRID CO-ORDINATES: E N	INITIALS & DATE: <i>AKOA</i> <i>9 March 2012</i>	FEATURE No.: <i>33271</i>									
FEATURE TYPE (For example wall, staircase, bench, foundation structure, platform etc.):			Full extent visible in plan: YES / NO										
1. Dimensions (in metres)	Length: <i>2.40m</i>	Width: <i>0.50m</i>	Height: <i>0.37m</i>										
2. Type of material(s) used													
3. Coursing (form of construction)													
4. Orientation	<i>north - south</i>												
5. Associated collapse													
6. Cut & fill feature #'s													
7. Repaired?													
8. Associated floors													
9. Surface treatments? E.g. plaster, paint, mouldings													
10. Size of one component													
11. Bonding material													
12. Excavated	Yes/No												
Mini stratigraphic matrix <table border="1" style="width: 100%; text-align: center;"> <tr> <td style="width: 20%; height: 20px;"></td> <td style="width: 20%; height: 20px;"><i>33272</i></td> <td style="width: 20%; height: 20px;"></td> </tr> <tr> <td></td> <td style="border-top: 1px solid black; height: 20px;"><i>33271</i></td> <td></td> </tr> <tr> <td style="height: 20px;"></td> <td style="border-top: 1px solid black; height: 20px;"><i>33270</i></td> <td style="height: 20px;"></td> </tr> </table>			<i>33272</i>			<i>33271</i>			<i>33270</i>		Abuts: <i>33270</i> Same as: Abutted by: <i>33272</i> Associated features: Bonded into: Contiguous with:		
	<i>33272</i>												
	<i>33271</i>												
	<i>33270</i>												
Discussion and interpretation: <p style="text-align: center;"><i>north - south mark brick wall (<33271>), Forms the eastern limit of space (11243)</i></p>													

Remember: do not just draw the architectural feature in isolation. Show how it relates to surrounding features and include details of surface treatments, repairs/modifications/damage, bonding material(s), and associated cuts. Annotate all aspects of the feature or use a Drawing Key. Measurements must be included for all aspects of the feature and surrounding features.



Profile Sketch - State direction the elevation of the feature being drawn is facing e.g. 'West Facing Elevation of Feature If feature was drawn in section then include the grid co-ordinates and elevations.

Drawing No.'s:	Photo No.'s:
Space No.: 11242, 11243	Structure No.:
Matrix Group:	Matrix Phase:
Samples taken:	