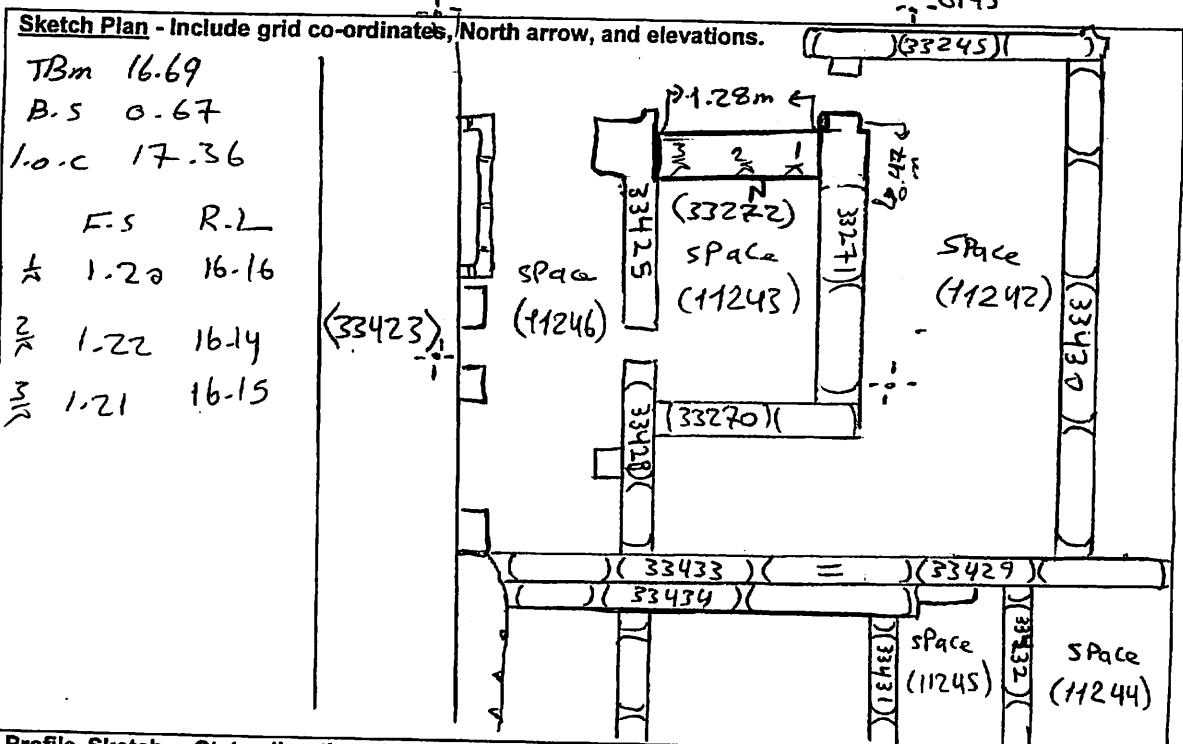


AREA: kkt-E+	GRID SQUARE (S): G45	GRID CO-ORDINATES: E N	INITIALS & DATE: AKOA 9 March 2012	FEATURE No.: 33272									
FEATURE TYPE (For example wall, staircase, bench, foundation structure, platform etc.):			Full extent visible in plan: YES / NO										
1. Dimensions (in metres)	Length: 1.28m	Width: 0.47	Height: 0.45m										
2. Type of material(s) used													
3. Coursing (form of construction)													
4. Orientation	East - west												
5. Associated collapse													
6. Cut & fill feature #'s													
7. Repaired?													
8. Associated floors													
9. Surface treatments? E.g. plaster, paint, mouldings													
10. Size of one component													
11. Bonding material													
12. Excavated	Yes/No												
Mini stratigraphic matrix <table border="1" style="width: 100%; text-align: center;"> <tr> <td style="width: 20%; height: 20px;"></td> <td style="width: 20%; height: 20px;">33273</td> <td style="width: 20%; height: 20px;"></td> </tr> <tr> <td></td> <td style="border: 1px solid black;">33272</td> <td></td> </tr> <tr> <td style="height: 20px;"></td> <td style="border: 1px solid black;">33271</td> <td style="height: 20px;"></td> </tr> </table>			33273			33272			33271		Abuts: 33271 Same as: Abutted by: 33425 Associated features: Bonded into: Contiguous with:		
	33273												
	33272												
	33271												
Discussion and interpretation: East-west marl brick wall (33272), form the northern limit of space (11243), and the southern limit of space (11252)													

Remember: do not just draw the architectural feature in isolation. Show how it relates to surrounding features and include details of surface treatments, repairs/modifications/damage, bonding material(s), and associated cuts. Annotate all aspects of the feature or use a Drawing Key. Measurements must be included for all aspects of the feature and surrounding features.



Profile Sketch - State direction the elevation of the feature being drawn is facing e.g. 'West Facing Elevation of Feature If feature was drawn in section then include the grid co-ordinates and elevations.

Drawing No.'s:	Photo No.'s:
Space No.: 11242, 11243	Structure No.:
Matrix Group:	Matrix Phase:
Samples taken:	