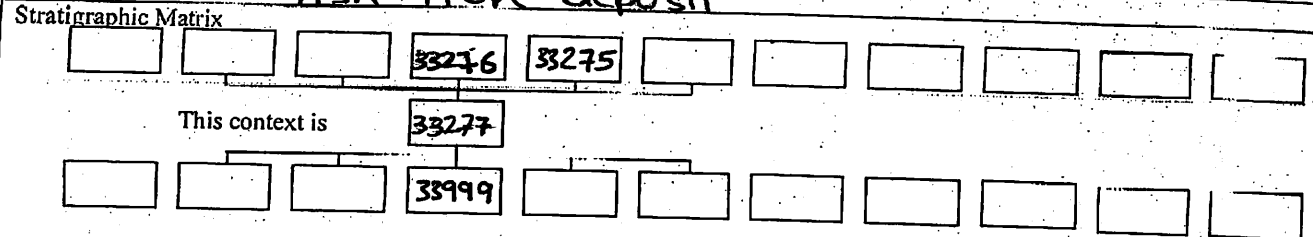


GIZA PLATEAU MAPPING PROJECT

Grid Square(s) I46	Area kkt-et	Context Type Deposit	Central Coords	Context 33277
DEPOSIT		CUT		
1. Compaction	1) loose			1. Shape in plan
2. Colour	2) Black			2. Corners
3. Composition/Particle Size (Over 10%)	3) Ash			3. Dimension/Depth
4. Inclusions (Under 10%) occa / mod / freq	4) occa pottery shards, occa charcoal			4. Break of slope-top
5. Thickness and extent	5) (2.30) N/S, (4.50) E/W thickness (c. 07)			5. Sides
6. Top and bottom boundaries	6) Top and bottom boundaries clear			6. Break of slope-base
7. Other comments	7) _____			7. Base
8. Method and conditions	8) trowel			8. Orientation
				9. Inclination of axis
				10. Truncated (if known)
				11. Fill #s
				12. Other comments Draw profile overleaf

Type of feature: **Ash rich deposit**



Your interpretation: Internal External Structural Other (specify)

Your discussion:

Ash deposit occupies the eastern most of space 1123!, while its western extension still going under the limit of excavation, surrounded bin ()

This layer very important, because its thickness only (3mm) was direct the floor. also we reading through it that this layer laid on a clean floor.

Placement in square

Context same as:	See contexts: (
Site Book Refs:	Matrix phase:
Initials and date Hoke 21/12/2012	
Checked Interpretation:	
Provisional period	Group/Phase
Initials and date	

Context Number 33277 GPMP 1st-64 2012

Bag Numbers
Ceramics 2012-1363 Objects

Environmental Samples & Type 2012, 1357, 1358, 1359, 1360 Exotics
1361, 1362, 1392, 1395

Charcoal 2012, 1364

Bones Other shell 2012, 1365

Lithics

Photographs

2012 (104016 → 104020)

Drawings

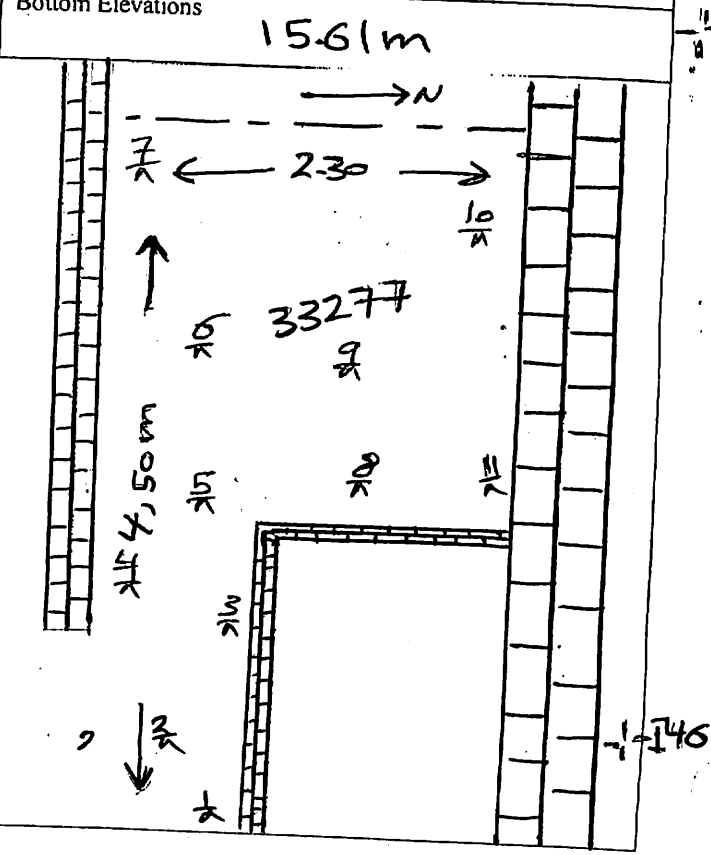
Plans 2012 (33277) Sections

Top Elevation 15.72 m Bottom Elevations 15.61 m

Sketch Plan

TBM 16.69
B.S 0.85
1.0.0.17.54

π	F.S	R.I
1	1.82	15.72
2	1.82	15.72
3	1.84	15.70
4	1.86	15.68
5	1.92	15.62
6	1.98	15.56
7	1.98	15.56
8	1.92	15.62
9	1.96	15.58
10	1.92	15.62
11	1.93	15.61



145

146