

AREA: KKT-N	GRID SQUARE (S): 20F15,16	GRID CO-ORDINATES: E N	INITIALS & DATE: MFMH	FEATURE No.: 33327
----------------	------------------------------	------------------------------	--------------------------	-----------------------

FEATURE TYPE (For example wall, staircase, bench, foundation structure, platform etc.): wall	Full extent visible in plan: <input checked="" type="radio"/> YES / NO
---	---

1. Dimensions (in metres)	Length: 3.05 m	Width: 0.080 m	Height: 0.20 m
---------------------------	-------------------	-------------------	-------------------

2. Type of material(s) used	mudbrick
-----------------------------	----------

3. Coursing (form of construction)	three courses of mudbrick, the northern face is stretchers
------------------------------------	--

4. Orientation	the southern face is stretchers, the middle course is headers E-W
----------------	--

5. Associated collapse	-
------------------------	---

6. Cut & fill feature #'s	-
---------------------------	---

7. Repaired?	-
--------------	---

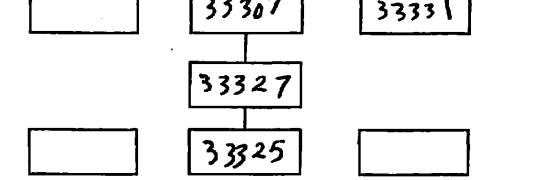
8. Associated floors	-
----------------------	---

9. Surface treatments? E.g. plaster, paint, mouldings	plastered by (33307)
---	----------------------

10. Size of one component	0.40 X 0.20 m
---------------------------	---------------

11. Bonding material	sandy silt
----------------------	------------

12. Excavated	Yes/No not excavated
---------------	----------------------



Abuts: Same as:

Abutted by: <33328> Associated features:

Bonded into: <33325>

Contiguous with: 33326

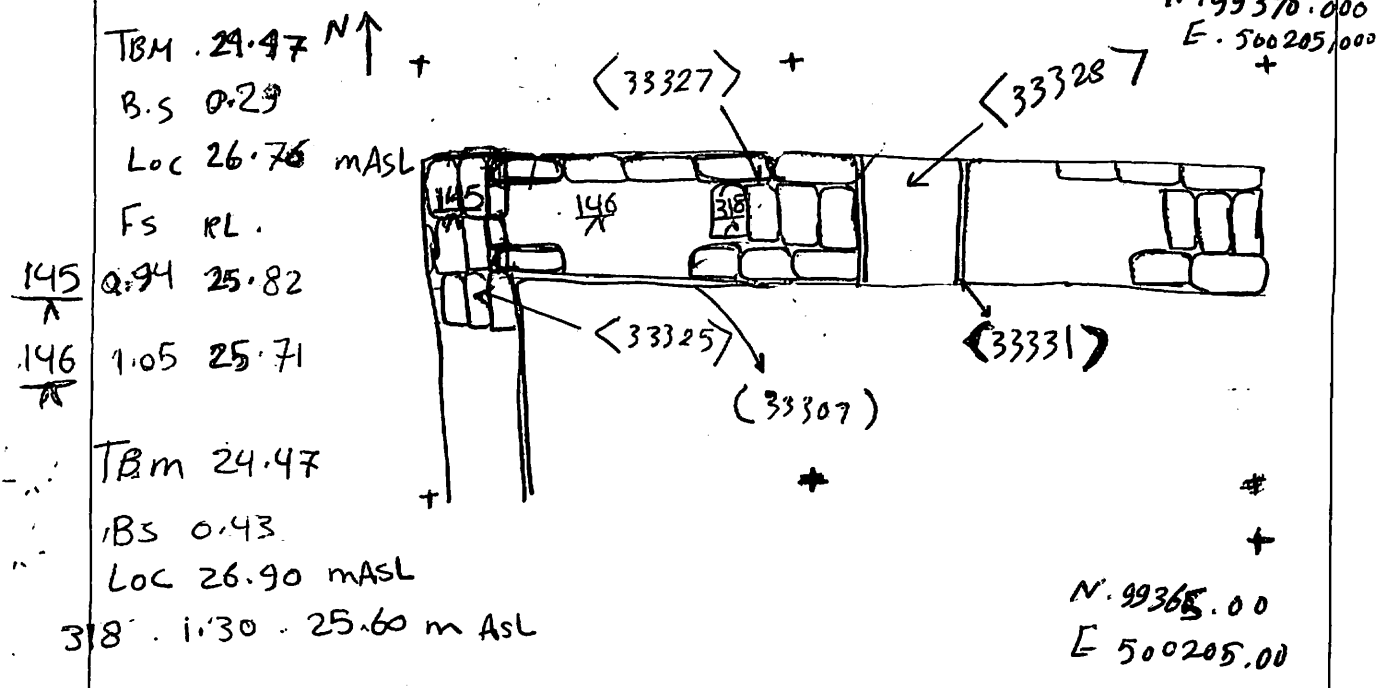
Discussion and interpretation:

It is a northern wall of the room ¹¹²⁹¹, of mudbrick, it consists of three courses, the northern one is stretchers, the southern is also stretchers, but the middle one is headers.

We notice that this wall is ~~is~~ a boundary one by the northern street of the house (C), is bonding into the western ~~main~~ ^{<33325>} wall the house, it ends at the northern entrance; so, we notice the wall <33327> coated by the plaster layer (33331), we see also that wall <33327> located between the northern street and the space (A) 11291

Remember: do not just draw the architectural feature in isolation. Show how it relates to surrounding features and include details of surface treatments, repairs/modifications/damage, bonding material(s), and associated cuts. Annotate all aspects of the feature or use a Drawing Key. Measurements must be included for all aspects of the feature and surrounding features.

Sketch Plan - Include grid co-ordinates, North arrow, and elevations.



Profile Sketch - State direction the elevation of the feature being drawn is facing e.g. 'West Facing Elevation of Feature If feature was drawn in section then include the grid co-ordinates and elevations.

Drawing No.'s: 2012-1	Photo No.'s: 512722, 512723
Space No.: 11291	Structure No.: house C
Matrix Group:	Matrix Phase: 4a
Samples taken:	