

33213

AREA: kkt-ct	GRID SQUARE (S): H, I 47	GRID CO-ORDINATES: E N	INITIALS & DATE: AKOA 8 March 2012	FEATURE No.: 33410
-----------------	-----------------------------	------------------------------	--	-----------------------

FEATURE TYPE (For example wall, staircase, bench, foundation structure, platform etc.):	Full extent visible in plan: <input checked="" type="radio"/> YES / NO
---	---

1. Dimensions (in metres)	Length: 5.85 m	Width: 0.64 m	Height: 0.85 m
---------------------------	-------------------	------------------	-------------------

2. Type of material(s) used	
-----------------------------	--

3. Coursing (form of construction)	10, 4b, 65
------------------------------------	------------

4. Orientation	North-South
----------------	-------------

5. Associated collapse	
------------------------	--

6. Cut & fill feature #'s	
---------------------------	--

7. Repaired?	
--------------	--

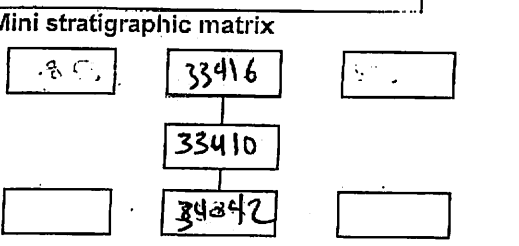
8. Associated floors	
----------------------	--

9. Surface treatments? E.g. plaster, paint, mouldings	
---	--

10. Size of one component	
---------------------------	--

11. Bonding material	
----------------------	--

12. Excavated	<input checked="" type="radio"/> Yes / <input type="radio"/> No
---------------	---



Abuts: 33262 Same as:
 Abutted by: 33856 Associated features:
 Bonded into:
 Contiguous with:

Discussion and interpretation:
 North-South masonry brick wall < 33410 > forms the eastern limit of space 11231, 11232, 11233 (partially excavated) and the western limit of space 11229

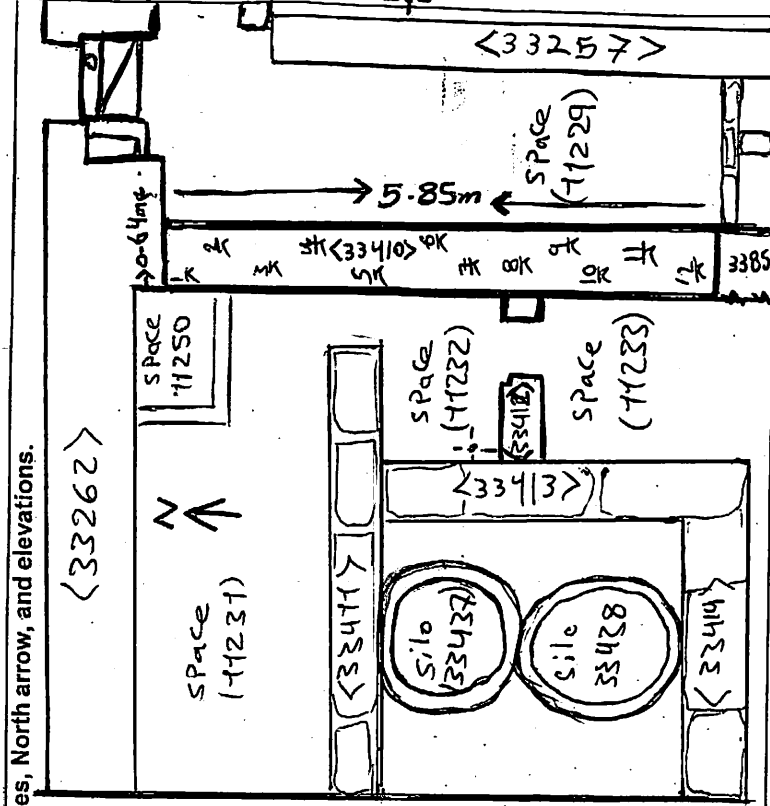
Remember: do not just draw the architectural feature in isolation. Show how it relates to surrounding features and include details of surface treatments, repairs/modifications/damage, bonding material(s), and associated cuts. Annotate all aspects of the feature or use a Drawing Key. Measurements must be included for all aspects of the feature and surrounding features.

Sketch Plan - Include grid co-ordinates, North arrow, and elevations.

TBm 16.69 B.S. 0.67

I.o.c 17.36 R.L

F.S	R.L
1.17	16.19
0.99	16.37
0.88	16.48
0.83	16.53
0.83	16.53
0.81	16.55
0.81	16.55
0.82	16.52
0.82	16.54
0.82	16.54
0.86	16.50
0.89	16.47



Profile Sketch - State direction the elevation of the feature being drawn is facing e.g. 'West Facing Elevation of Feature ... If feature was drawn in section then include the grid co-ordinates and elevations.

Drawing No.'s:

Photo No.'s:

Space No.: 11229, 11232, 11233, 11231

Structure No.:

Matrix Group:

Matrix Phase:

Samples taken: