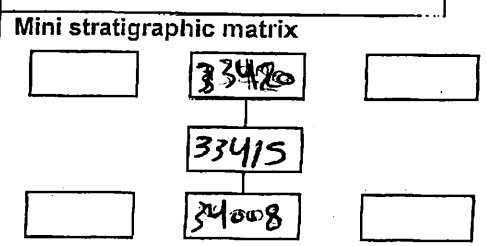


AREA: kkt-ct	GRID SQUARE (S): H 45	GRID CO-ORDINATES: E N	INITIALS & DATE: AKOA 8 March 2012	FEATURE No.: (33415)
-----------------	--------------------------	------------------------------	--	-------------------------

FEATURE TYPE (For example wall, staircase, bench, foundation structure, platform etc.):	Full extent visible in plan: <input checked="" type="radio"/> YES / NO
---	---

1. Dimensions (in metres)	Length: 2.15 m	Width: 0.50 m	Height: 0.55 m
2. Type of material(s) used			
3. Coursing (form of construction)	5 courses (2 courses headers / 3 courses stretchers)		
4. Orientation	East/West		
5. Associated collapse			
6. Cut & fill feature #'s			
7. Repaired?			
8. Associated floors			
9. Surface treatments? E.g. plaster, paint, mouldings			
10. Size of one component			
11. Bonding material			
12. Excavated	Yes <input checked="" type="radio"/> No		



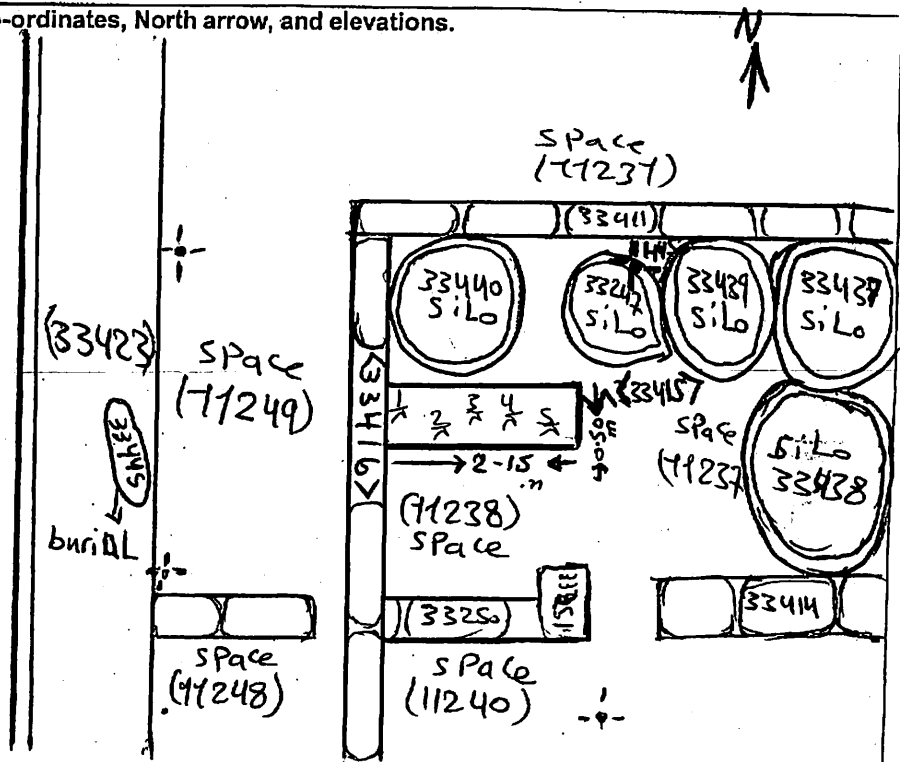
Abuts: 33416 = 33420    Same as:  
 Abutted by: 34008    Associated features:  
 Bonded into:  
 Contiguous with:

Discussion and interpretation:  
 East-west masonry brick wall (33415) forms the northern limit of space 11238

Remember: do not just draw the architectural feature in isolation. Show how it relates to surrounding features and include details of surface treatments, repairs/modifications/damage, bonding material(s), and associated cuts. Annotate all aspects of the feature or use a Drawing Key. Measurements must be included for all aspects of the feature and surrounding features.

Sketch Plan - Include grid co-ordinates, North arrow, and elevations.

	TBm	16.69
	B-S	0.58
	1.0-C	17.27
	F-S	R.L
1	1.23	16.09
2	1.15	16.12
3	1.10	16.17
4	0.99	16.28
5	0.99	16.28



Profile Sketch - State direction the elevation of the feature being drawn is facing e.g. 'West Facing Elevation of Feature .... If feature was drawn in section then include the grid co-ordinates and elevations.

Drawing No.'s:	Photo No.'s:
Space No.: 11237, 11238	Structure No.:
Matrix Group:	Matrix Phase:
Samples taken:	