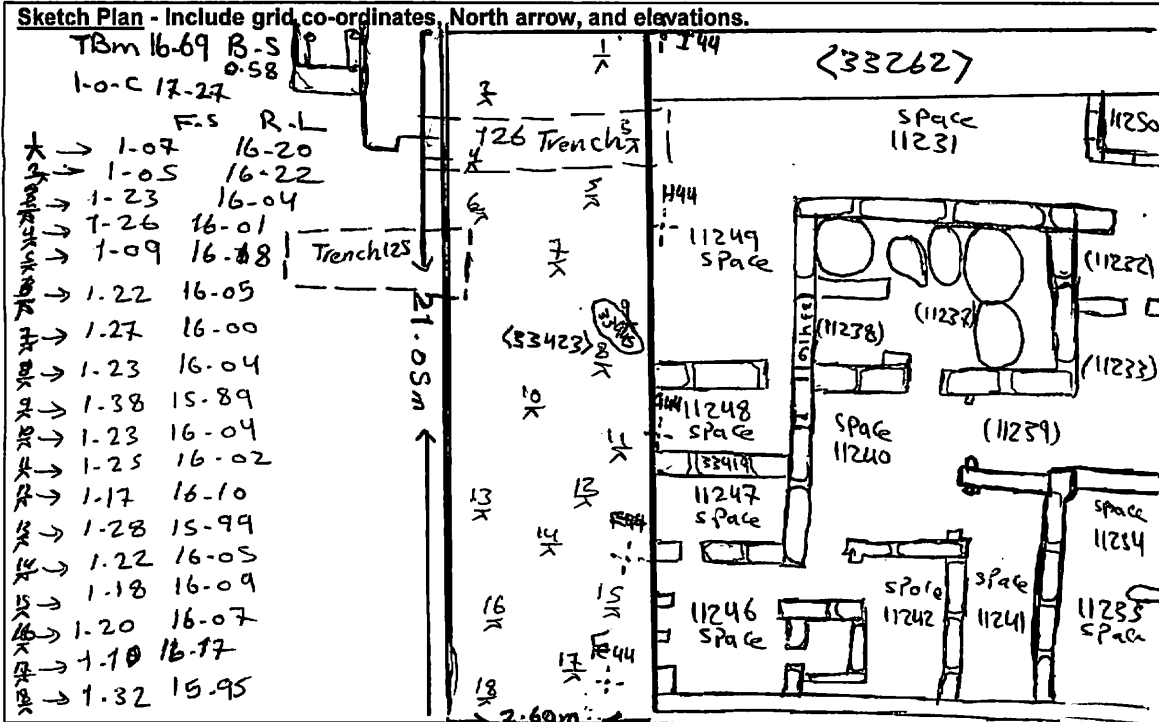


AREA: kkT-Et	GRID SQUARE (S): F, G, H, I 44, 45	GRID CO-ORDINATES: E N	INITIALS & DATE: AKOA 8 March 2012	FEATURE No.: 33423
FEATURE TYPE (For example wall, staircase, bench, foundation structure, platform etc.):			Full extent visible in plan: YES / <input checked="" type="radio"/> NO	
1. Dimensions (in metres)	Length: 21.05 m	Width: 2.60 m	Height: 0.40	
2. Type of material(s) used				
3. Coursing (form of construction)				
4. Orientation				
5. Associated collapse				
6. Cut & fill feature #'s				
7. Repaired?				
8. Associated floors				
9. Surface treatments? E.g. plaster, paint, mouldings				
10. Size of one component				
11. Bonding material				
12. Excavated	Yes/No <input checked="" type="radio"/>			
Mini stratigraphic matrix 		Abuts: Same as: Abutted by: <33419> Associated features: Bonded into: <33262> Contiguous with:		
Discussion and interpretation: it's rectangular Po east west massive mud brick wall (33423) forms the western limit of silo building complex (kkT-Et), truncated by the rectangular shape Trench in the northern part of it to know the relationship between the wall and the western wall (33031, 33892) in trench (125). also that wall abutted by some the western internal walls of silo building complex, might be it was entrance in that wall but in the later times had been blocked by mud brick wall (34014) in space (11246)				

Remember: do not just draw the architectural feature in isolation. Show how it relates to surrounding features and include details of surface treatments, repairs/modifications/damage, bonding material(s), and associated cuts. Annotate all aspects of the feature or use a Drawing Key. Measurements must be included for all aspects of the feature and surrounding features.



Profile Sketch - State direction the elevation of the feature being drawn is facing e.g. 'West Facing Elevation of Feature If feature was drawn in section then include the grid co-ordinates and elevations.

Drawing No.'s:	Photo No.'s:
Space No.: 11231, 11249, 11248, 11247, 11246	Structure No.:
Matrix Group:	Matrix Phase:
Samples taken:	