

AREA: KKT-E+	GRID SQUARE (S): F-45	GRID CO-ORDINATES: E N	INITIALS & DATE: AKOA 9 March 2012	FEATURE No.: 33434
FEATURE TYPE (For example wall, staircase, bench, foundation structure, platform etc.):			Full extent visible in plan: <input checked="" type="radio"/> YES / NO	
1. Dimensions (in metres)	Length: 3.40m	Width: 0.47m	Height: 0.25m	
2. Type of material(s) used				
3. Coursing (form of construction)				
4. Orientation	East-west			
5. Associated collapse				
6. Cut & fill feature #'s				
7. Repaired?				
8. Associated floors				
9. Surface treatments? E.g. plaster, paint, mouldings				
10. Size of one component				
11. Bonding material				
12. Excavated	<input checked="" type="radio"/> Yes / <input type="radio"/> No			
Mini stratigraphic matrix		Abuts: 33433 Same as:		
<input type="checkbox"/>	33435	34033	Abutted by: 33425 Associated features:	
	33434		Bonded into:	
<input type="checkbox"/>	33433	<input type="checkbox"/>	Contiguous with:	
Discussion and interpretation: east-west mud brick wall <33434> Forms the northern limit of SW un excavated two spaces (11245), (11339), (11340)				

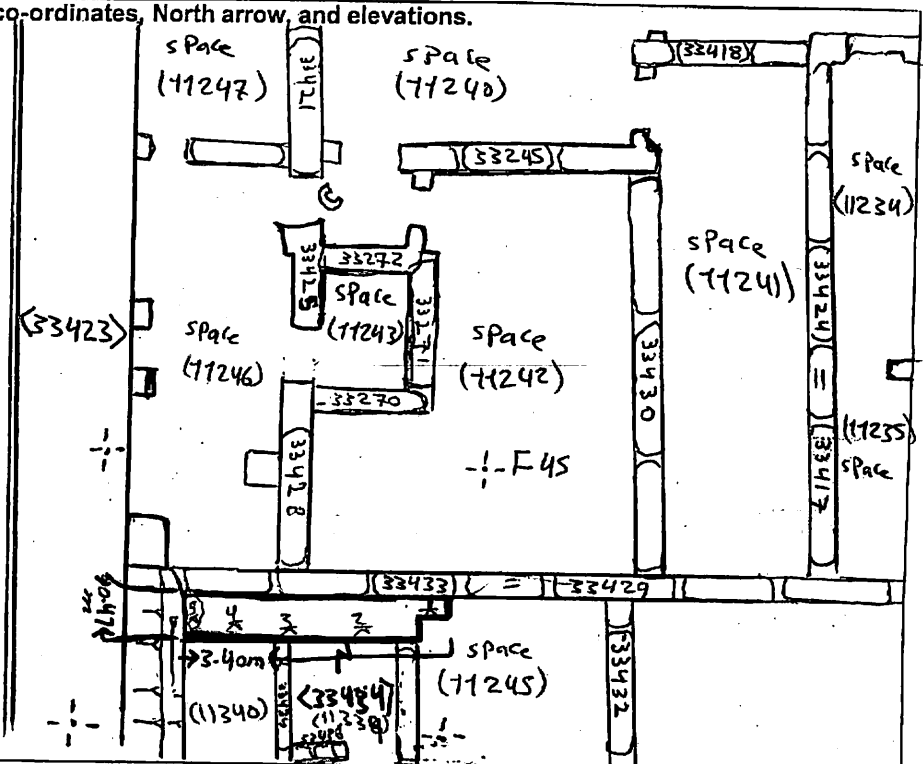
Remember: do not just draw the architectural feature in isolation. Show how it relates to surrounding features and include details of surface treatments, repairs/modifications/damage, bonding material(s), and associated cuts. Annotate all aspects of the feature or use a Drawing Key. Measurements must be included for all aspects of the feature and surrounding features.

Sketch Plan - Include grid co-ordinates, North arrow, and elevations.

TBm 16.69
 B.S 1.19
 I.O.C 17.88

F.S R.L

1	1.43	16.45
2	1.43	16.45
3	1.50	16.38
4	1.54	16.34
5	1.59	16.29



Profile Sketch - State direction the elevation of the feature being drawn is facing e.g. 'West Facing Elevation of Feature If feature was drawn in section then include the grid co-ordinates and elevations.

Drawing No.'s:	Photo No.'s:
Space No. (11245)	Structure No.:
Matrix Group:	Matrix Phase:
Samples taken:	