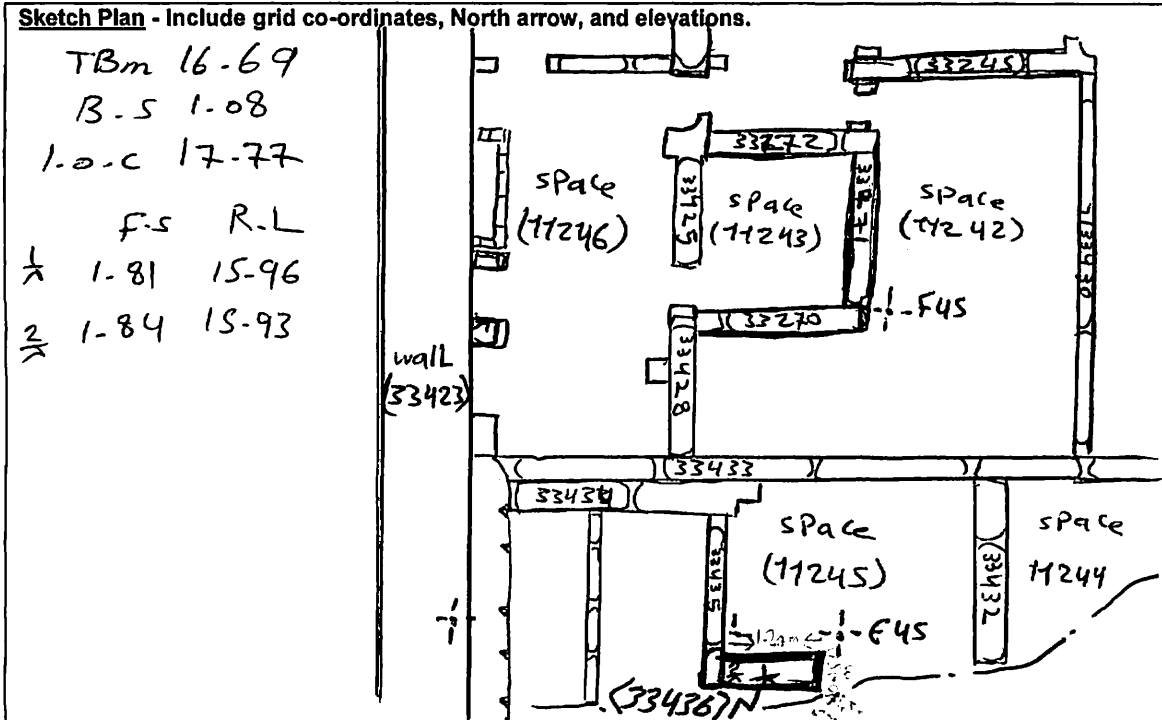


AREA: K11-Et	GRID SQUARE (S): E45	GRID CO-ORDINATES: E N	INITIALS & DATE: AKOA 9 March 2012	FEATURE No.: 33436
FEATURE TYPE (For example wall, staircase, bench, foundation structure, platform etc.):			Full extent visible in plan: YES <input type="radio"/> NO <input checked="" type="radio"/>	
1. Dimensions (in metres)	Length: 1.20m	Width: 0.15m	Height: _____	
2. Type of material(s) used				
3. Coursing (form of construction)				
4. Orientation	east/west			
5. Associated collapse				
6. Cut & fill feature #'s				
7. Repaired?				
8. Associated floors				
9. Surface treatments? E.g. plaster, paint, mouldings				
10. Size of one component				
11. Bonding material				
12. Excavated	Yes/No <input checked="" type="radio"/>			
Mini stratigraphic matrix 		Abuts: 33435      Same as: Abutted by:      Associated features: Bonded into: Contiguous with:		
Discussion and interpretation: thin mud brick wall (33436), still not visible in plan and not excavated because it forms the southern limit of an excavated small space beside the southern limit of excavation				

Remember: do not just draw the architectural feature in isolation. Show how it relates to surrounding features and include details of surface treatments, repairs/modifications/damage, bonding material(s), and associated cuts. Annotate all aspects of the feature or use a Drawing Key. Measurements must be included for all aspects of the feature and surrounding features.



**Profile Sketch** - State direction the elevation of the feature being drawn is facing e.g. 'West Facing Elevation of Feature .... If feature was drawn in section then include the grid co-ordinates and elevations.

Drawing No.'s:	Photo No.'s:
Space No.: 11245	Structure No.:
Matrix Group:	Matrix Phase:
Samples taken:	