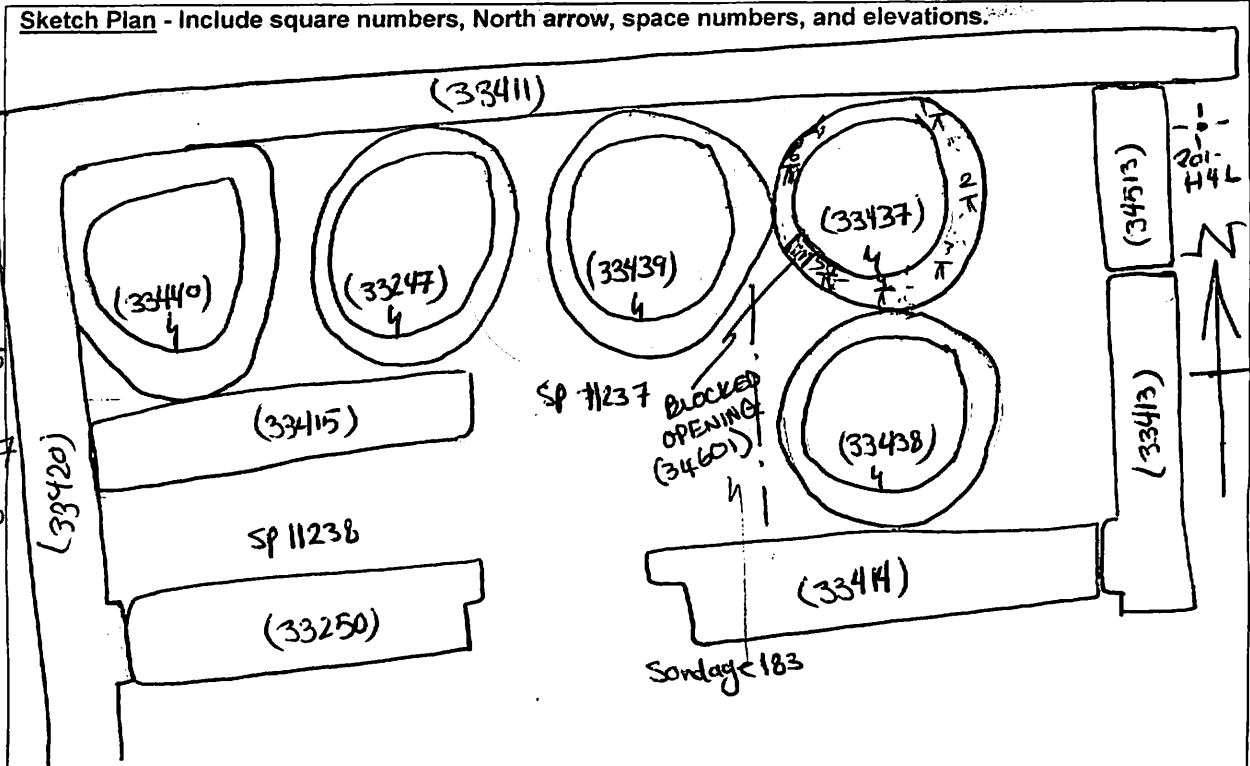


AREA: <b>KYT-E+</b>	GRID SQUARES: <b>201-H46 , 201-I46</b>	INITIALS & DATE: <b>HMM 27<sup>III</sup> 2014</b>	FEATURE No.: <b>33437</b>
FEATURE TYPE (For example wall, staircase, bench, foundation structure, platform etc.): <b>Silo</b>		Full extent visible in plan: <b>(YES) / NO</b>	
1. Dimensions (in metres)	Length: internal diameter <b>1.96m</b> external diameter <b>1.17m</b>	Width:	Height: <b>0.99m</b>
2. Type of material(s) used	<b>marl Brick</b>		
3. Coursing (form of construction)	<b>no stretcher Courses only seen</b>		
4. Orientation	<b>N/A</b>		
5. Associated collapse			
6. Cut & fill feature #'s	<b>Fills (33441) , (33279) , (33280) , (34517)</b>		
7. Repaired?	<b>N/A</b>		
8. Associated floors	<b>(33814)</b>		
9. Surface treatments? E.g. plaster, paint, mouldings	<b>mud Render (34519)</b>		
10. Size of one component	<b>0.28m x 0.14m x 0.08m</b>		
11. Bonding material	<b>slightly Ashy silt with v. small limestone frags</b>		
12. Excavated	Yes <b>(No)</b>		
Mini stratigraphic matrix		Abuts:	Same as:
<pre> graph TD     34519[34519] --- 33437[33437]     33437 --- NFE[NFE]     34519 --- 34604[34604]     33437 --- 34604     </pre>		Abutted by:	Associated features:
		Bonded into:	
		Contiguous with:	
Discussion and interpretation:			
<p>NE Circular silo located in the most eastern corner of space 11237 (silo space) to the north of SE silo (33438) and to the east of (33439). The SE External diameter side of silo is very thin. There is crack visible in this side. The silo wall curved gradually towards the inside so that vaulted or domed shaped top could be reconstructed. We didn't expose the bottom of this silo.</p>			

Remember: do not just draw the architectural feature in isolation. Show how it relates to surrounding features and include details of surface treatments, repairs/modifications/damage, bonding material(s), and associated cuts. Annotate all aspects of the feature or use a Drawing Key. Measurements must be included for all aspects of the feature and surrounding features.

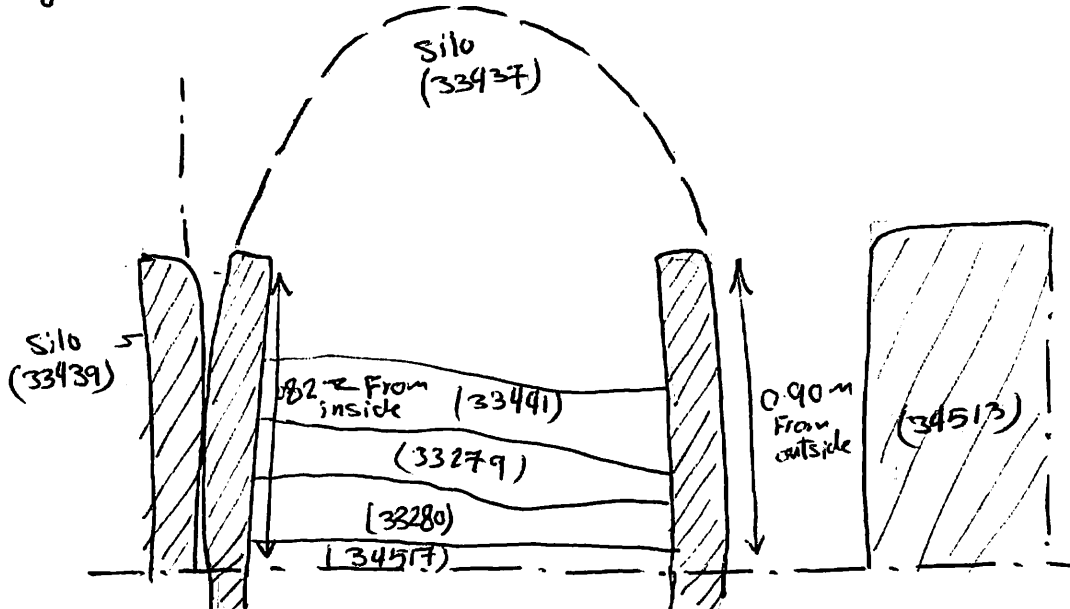
Sketch Plan - Include square numbers, North arrow, space numbers, and elevations.

+ Bm 16.81  
 Bs 2.05  
 Loc 18.86  
 F RL  
 + 228 16.58  
 2.23 16.56  
 3 2.31 16.55  
 4 2.39 16.47  
 5 2.46 16.40  
 6 2.40 16.46



Profile Sketch - State direction the elevation of the feature being drawn is facing e.g. 'West Facing Elevation of Feature .... If feature was drawn in section then include the grid co-ordinates and elevations.

(Space 11237)  
 Sondage 183  
 W



Drawing No.'s: 2014-35, 2014-36, 37 Photo No.'s: 2014-815393, 815398

Space No.: 11237 Structure No.: 15124

Matrix Group: 18135 Matrix Phase:

Samples taken: Sondage No.: 183