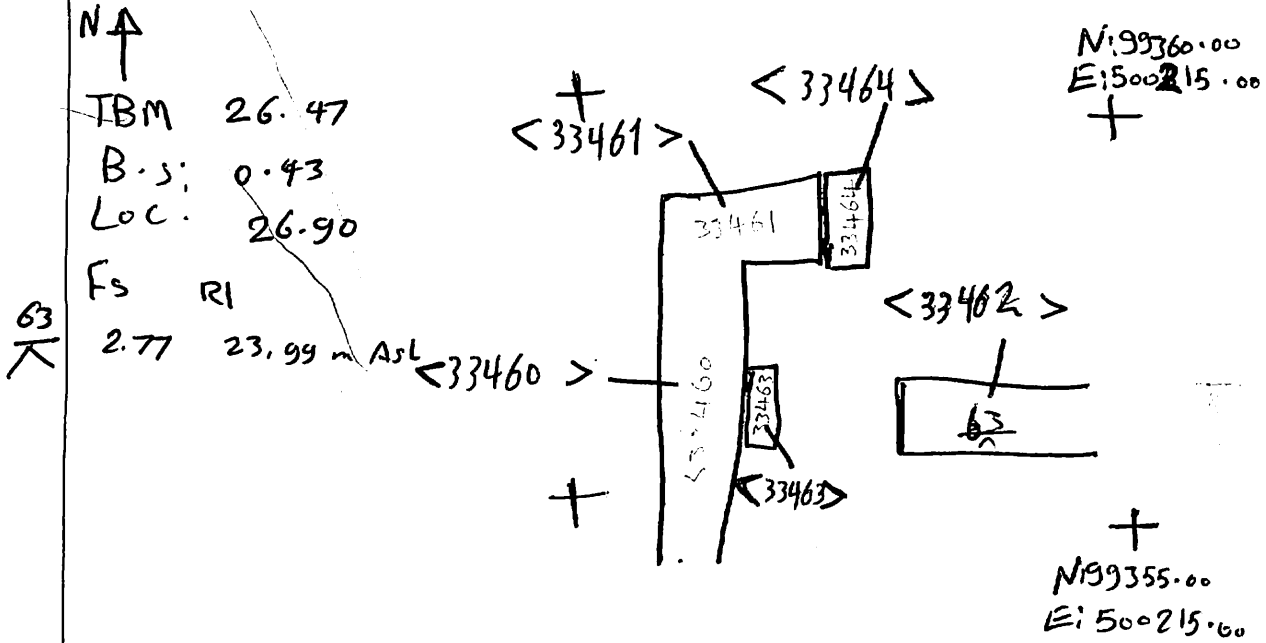


③

AREA: KKTN	GRID SQUARE (S): 201 D17	GRID CO-ORDINATES: E N	INITIALS & DATE: HAHA / MFMH 24/1/2012	FEATURE No.: 33462
FEATURE TYPE (For example wall, staircase, bench, foundation structure, platform etc.): wall.			Full extent visible in plan: YES / <input checked="" type="radio"/> NO	
1. Dimensions (in metres)		Length: 1.90 M	Width: 0.70 M	Height: 0.07m
2. Type of material(s) used		Mud brick		
3. Coursing (form of construction)				
4. Orientation		E - W		
5. Associated collapse		—		
6. Cut & fill feature #'s		—		
7. Repaired?		—		
8. Associated floors		—		
9. Surface treatments? E.g. plaster, paint, mouldings		—		
10. Size of one component				
11. Bonding material		M sandy silt		
12. Excavated		Yes/No Not excavated		
Mini stratigraphic matrix		Abuts: (33288) Same as:		
		Abutted by: Associated features:		
		Bonded into:		
		Contiguous with:		
Discussion and interpretation:				
<p>it is a wall of mudbrick, located between the rooms 11283-11284</p> <p>it abuts the main east eastern wall <33042>, so, we can notice that, there is a plaster layer between them, it means that the wall <33462> is a main event in front of the southern entrance of the house (C), it may prevent the vision from a stranger who can walk along the house (C) or to be a visitor, it is a kind of privacy of the inhabitants.</p> <p>it wasn't cleared, at the beginning, but, when we went on cleaning this part we could see find its outlines.</p>				

Remember: do not just draw the architectural feature in isolation. Show how it relates to surrounding features and include details of surface treatments, repairs/modifications/damage, bonding material(s), and associated cuts. Annotate all aspects of the feature or use a Drawing Key. Measurements must be included for all aspects of the feature and surrounding features.

Sketch Plan - Include grid co-ordinates, North arrow, and elevations.



Profile Sketch - State direction the elevation of the feature being drawn is facing e.g. 'West Facing Elevation of Feature If feature was drawn in section then include the grid co-ordinates and elevations.

Drawing No.'s: 2012-1	Photo No.'s: 512484
Space No.: 11284 (11286)	Structure No.: House C
Matrix Group:	Matrix Phase: 46
Samples taken:	