

AREA: KKT-N	GRID SQUARE (S): 201 D14 201 E14	GRID CO-ORDINATES: E N	INITIALS & DATE: MFMH 1-2-2012	FEATURE No.: 33472
----------------	----------------------------------------	------------------------------	--------------------------------------	-----------------------

FEATURE TYPE (For example <u>wall</u> staircase, bench, foundation structure, platform etc.): <u>wall</u>	Full extent visible in plan: <u>YES</u> / NO
--------------------------------------------------------------------------------------------------------------	-------------------------------------------------

1. Dimensions (in metres)	Length: 5.35 m	Width: 0.60 m	Height: 0.02 m
2. Type of material(s) used	mudbrick		
3. Coursing (form of construction)	two courses of mudbrick		
4. Orientation	N-S		
5. Associated collapse	—		
6. Cut & fill feature #'s	—		
7. Repaired?	—		
8. Associated floors	—		
9. Surface treatments? E.g. plaster, paint, mouldings	—		
10. Size of one component	0.40 m by 0.15 m		
11. Bonding material	Sandy Silt		
12. Excavated	Yes <input checked="" type="radio"/> No <input type="radio"/> <u>Not excavated</u>		

Mini stratigraphic matrix 	Abuts: <33471>      Same as: Abutted by:      Associated features: Bonded into: Contiguous with:
-------------------------------	-----------------------------------------------------------------------------------------------------------

Discussion and interpretation:

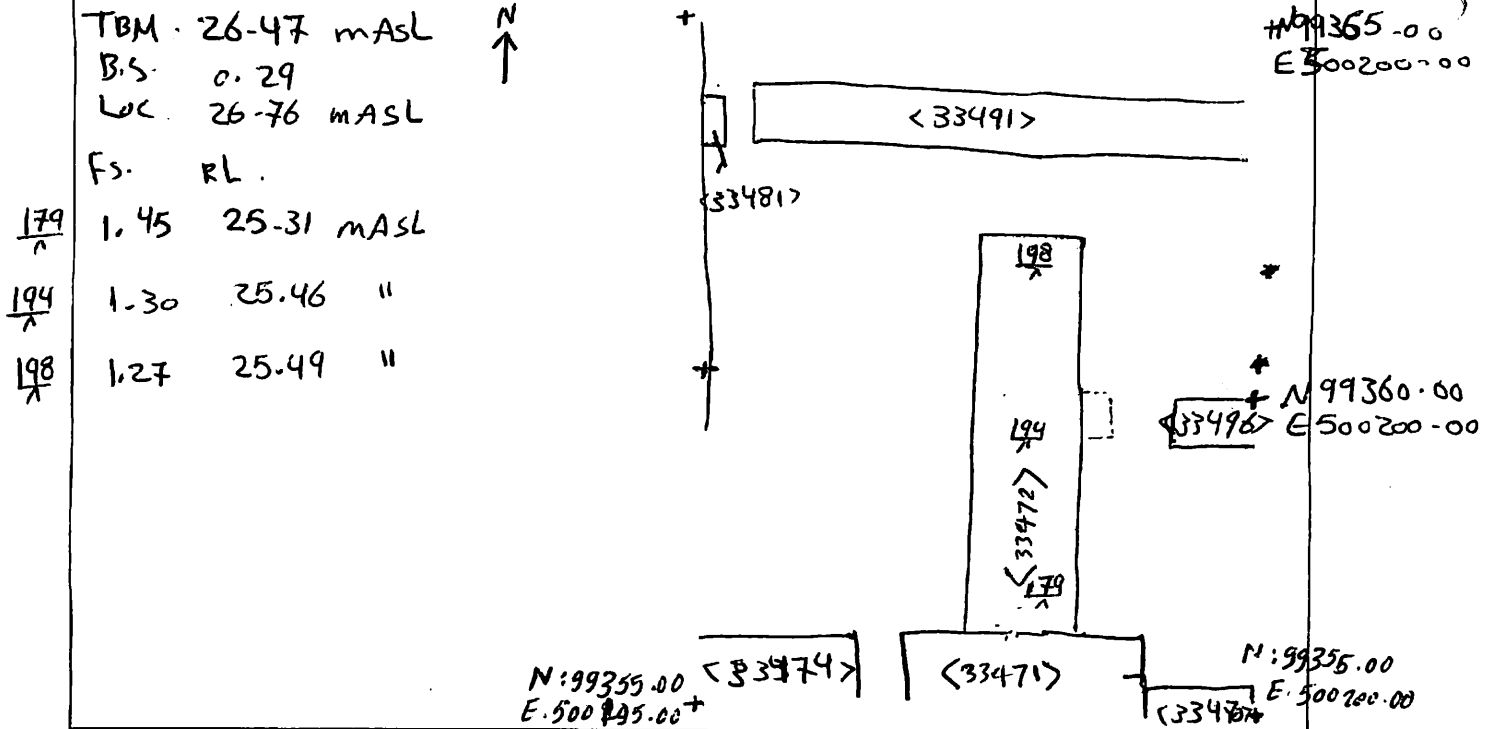
it's a wall of mudbrick (N-S), it consists of two courses, the western face is headers, and the the eastern one is stretchers. it measures 5.35 m length by 0.60 m width. It abuts the wall <33471>.

It forms the western wall of the spaces (11301, 11302) and ~~the~~ it forms the eastern wall of the space (11303).

It is clearly that the wall is in a bad condition, because some parts are eroded and the crushed lime stone appears frequently.

Remember: do not just draw the architectural feature in isolation. Show how it relates to surrounding features and include details of surface treatments, repairs/modifications/damage, bonding material(s), and associated cuts. Annotate all aspects of the feature or use a Drawing Key. Measurements must be included for all aspects of the feature and surrounding features.

Sketch Plan - Include grid co-ordinates, North arrow, and elevations.



Profile Sketch - State direction the elevation of the feature being drawn is facing e.g. 'West Facing Elevation of Feature .... If feature was drawn in section then include the grid co-ordinates and elevations.

Drawing No.'s: 2012-2	Photo No.'s: 512737, 512738
Space No.: 11301, 11302, 11303	Structure No.: house (B)
Matrix Group:	Matrix Phase: 5
Samples taken:	