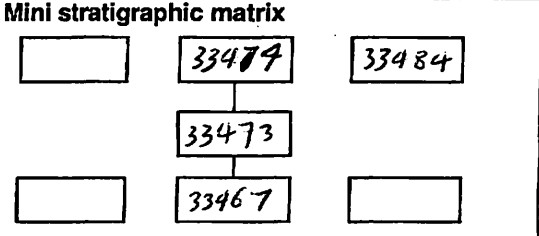


AREA: KKT-N	GRID SQUARE (S): 201C14	GRID CO-ORDINATES: E N	INITIALS & DATE: MFMH 1-2-2012	FEATURE No.: 33473
----------------	----------------------------	------------------------------	--------------------------------------	-----------------------

FEATURE TYPE (For example wall, staircase, bench, foundation structure, platform etc.): wall	Full extent visible in plan: <input checked="" type="radio"/> YES / NO
---	---

1. Dimensions (in metres)	Length: 2.05 m	Width: 0.64 m	Height: 0.08 m
2. Type of material(s) used	mudbrick		
3. Coursing (form of construction)	two courses of mudbrick		
4. Orientation	N-S		
5. Associated collapse	-		
6. Cut & fill feature #'s	-		
7. Repaired?	-		
8. Associated floors	-		
9. Surface treatments? E.g. plaster, paint, mouldings	plastered by (33484)		
10. Size of one component	0.40 m by 0.15 m		
11. Bonding material	Sandy silt		
12. Excavated	Yes <input checked="" type="radio"/> No <input type="radio"/> Not excavated		



Abuts: <33467>      Same as:

Abutted by: <33474>      Associated features:

Bonded into:

Contiguous with:

Discussion and interpretation:

it is a mudbrick wall (N-S), it measures 2.05 m length by 0.64 m width, it is coated by (33484) and abuts the southern wall <33467> and is abuted by the wall <33474>.

it consists of two mudbrick courses, the western face is headers and the eastern one is stretchers. it is located between the spaces (11304, 11305).

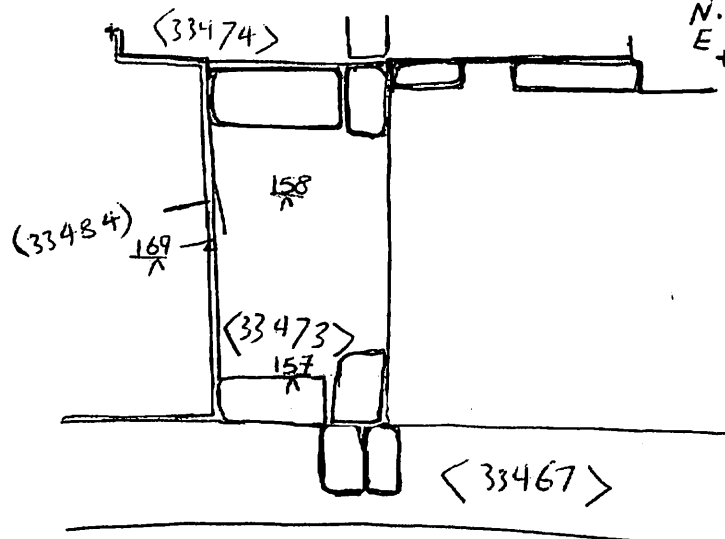
Remember: do not just draw the architectural feature in isolation. Show how it relates to surrounding features and include details of surface treatments, repairs/modifications/damage, bonding material(s), and associated cuts. Annotate all aspects of the feature or use a Drawing Key. Measurements must be included for all aspects of the feature and surrounding features.

**Sketch Plan** - Include grid co-ordinates, North arrow, and elevations.

TBM. 26.47 mASL  
 B.S 0.29  
 Loc 26.76 mASL



Fs	RL
$\frac{157}{\wedge}$ 1.52	25.24 mASL
$\frac{158}{\wedge}$ 1.41	25.35 "
$\frac{169}{\wedge}$ 1.42	25.34 "



201 C14  
 N. 99355.00  
 E. 500200.00

N. 99350.00  
 +  
 E. 500200.00

**Profile Sketch** - State direction the elevation of the feature being drawn is facing e.g. 'West Facing Elevation of Feature .... If feature was drawn in section then include the grid co-ordinates and elevations.

Drawing No.'s: 2012-2	Photo No.'s: 512744, 512745
Space No.: 11304, 11305	Structure No.: house (B)
Matrix Group:	Matrix Phase: 5
Samples taken:	