

AREA: Kkt-N	GRID SQUARE (S): 201E13 - E14 D14	GRID CO-ORDINATES: E N	INITIALS & DATE: HAAA 11/2/2012	FEATURE No.: 33480
----------------	---	------------------------------	---------------------------------------	-----------------------

FEATURE TYPE (For example wall, staircase, bench, foundation structure, platform etc.): Wall	Full extent visible in plan: <input checked="" type="radio"/> YES / NO
---	---

1. Dimensions (in metres)	Length: 6.40 M	Width: 0.65 M	Height: 0.15 M
---------------------------	-------------------	------------------	-------------------

2. Type of material(s) used	Mud brick
-----------------------------	-----------

3. Coursing (form of construction)	Two courses of mud brick
------------------------------------	--------------------------

4. Orientation	S-N
----------------	-----

5. Associated collapse	—
------------------------	---

6. Cut & fill feature #'s	—
---------------------------	---

7. Repaired?	—
--------------	---

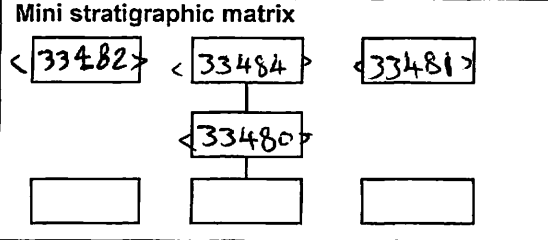
8. Associated floors	—
----------------------	---

9. Surface treatments? E.g. plaster, paint, mouldings	Plaster of (33484)
---	--------------------

10. Size of one component	0.40 M by 0.18 M
---------------------------	------------------

11. Bonding material	Sandy silt
----------------------	------------

12. Excavated	Yes/No Not Excavated.
---------------	--------------------------

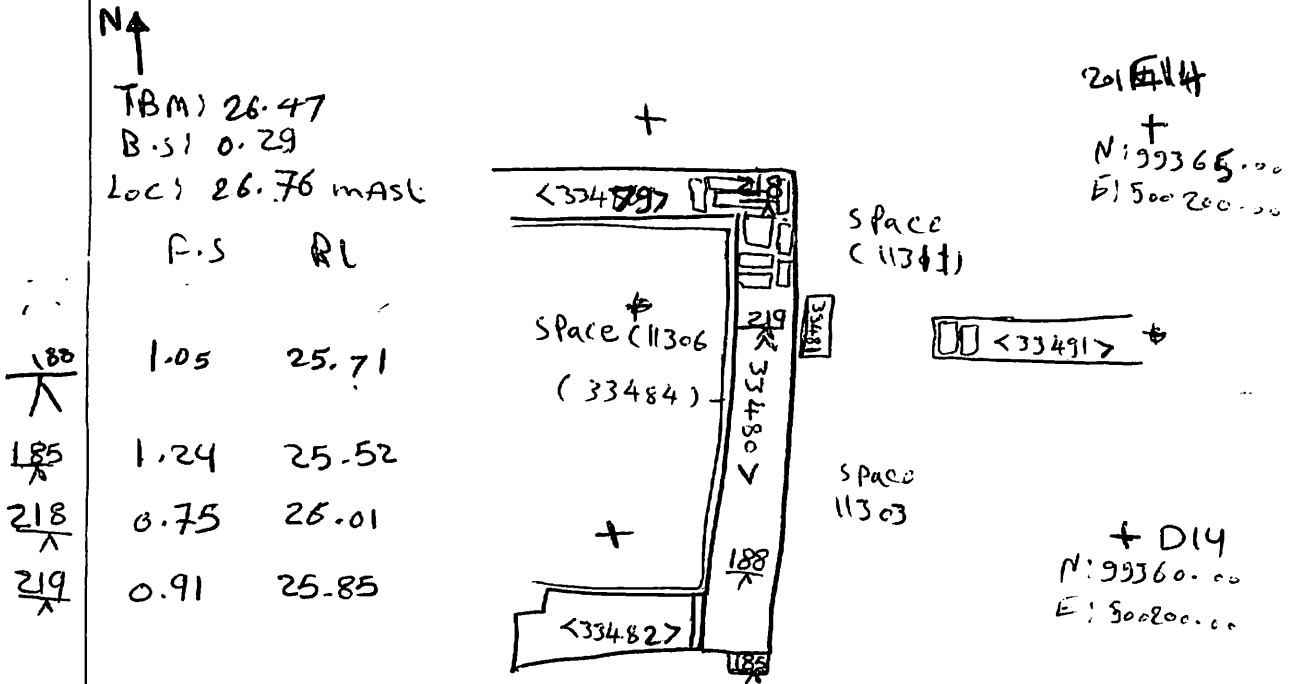


Abuts: Same as:
 Abutted by: < 33481 > < 33482 >
 Bonded into: < 33479 >
 Contiguous with:

Discussion and interpretation:
 It is a wall of mud brick (N-S) it consists of two courses, the western face is ~~header~~ ^{stretcher} and the eastern is header. It measures 6.40 M by 0.65, it abuts by wall < 33481 > < 33482 > it ~~is~~ forms the eastern wall of the space (11306) it ~~is~~ forms the western wall of the space (11301 - 11303) It is coated by plaster of (33484)

Remember: do not just draw the architectural feature in isolation. Show how it relates to surrounding features and include details of surface treatments, repairs/modifications/damage, bonding material(s), and associated cuts. Annotate all aspects of the feature or use a Drawing Key. Measurements must be included for all aspects of the feature and surrounding features.

Sketch Plan - Include grid co-ordinates, North arrow, and elevations.



Profile Sketch - State direction the elevation of the feature being drawn is facing e.g. 'West Facing Elevation of Feature If feature was drawn in section then include the grid co-ordinates and elevations.

Drawing No.'s: 2012-2	Photo No.'s: 512728
Space No.: 11306-H3011-11303	Structure No.: House B
Matrix Group:	Matrix Phase: 5
Samples taken:	