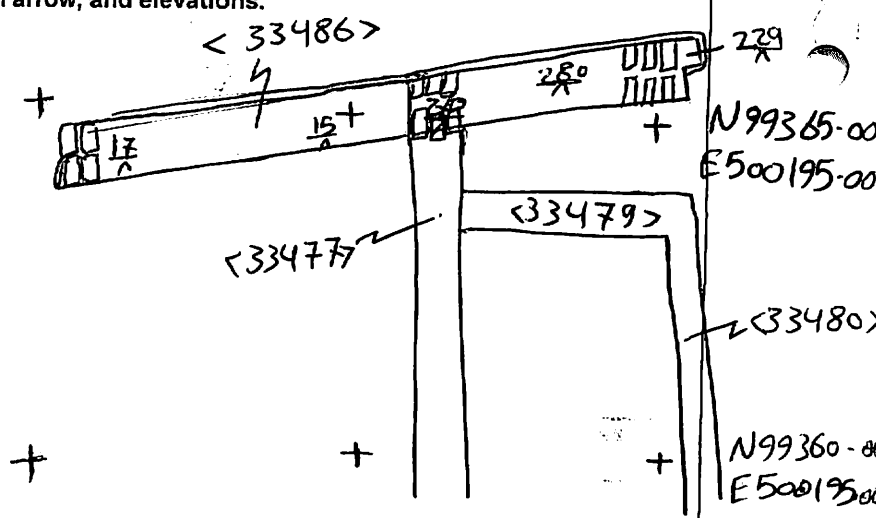


AREA: <b>KRT-N</b>	GRID SQUARE (S): <b>201 E13, 12</b> <b>201 F13 12</b> <b>F14</b>	GRID CO-ORDINATES: <b>E</b> <b>N</b>	INITIALS & DATE: <b>SAER</b> <b>5/1/2012</b>	FEATURE No.: <b>33486</b>															
FEATURE TYPE (For example <u>wall</u> , staircase, bench, foundation structure, platform etc.): <b>wall</b>			Full extent visible in plan: <input checked="" type="radio"/> YES / NO																
1. Dimensions (in metres)	Length: <b>10.50m</b>	Width: <b>0.90m</b>	Height: <b>0.15m</b>																
2. Type of material(s) used	<b>mud brick</b>																		
3. Coursing (form of construction)	<b>two courses</b>																		
4. Orientation	<b>E-W</b>																		
5. Associated collapse	-																		
6. Cut & fill feature #'s	-																		
7. Repaired?	-																		
8. Associated floors	-																		
9. Surface treatments? E.g. <u>plaster</u> , paint, mouldings	<b>33487</b>																		
10. Size of one component	<b>0.40m x 0.14m</b>																		
11. Bonding material	<b>Sandy silt</b>																		
12. Excavated	<input checked="" type="radio"/> Yes / <input type="radio"/> No																		
Mini stratigraphic matrix		Abuts: <b>Same as:</b>																	
<table border="0"> <tr> <td><b>33488</b></td> <td><b>33487</b></td> <td><b>33801</b></td> </tr> <tr> <td></td> <td>↓</td> <td></td> </tr> <tr> <td></td> <td><b>33486</b></td> <td></td> </tr> <tr> <td></td> <td>↓</td> <td></td> </tr> <tr> <td></td> <td></td> <td></td> </tr> </table>		<b>33488</b>	<b>33487</b>	<b>33801</b>		↓			<b>33486</b>			↓					Abutted by: <b>&lt;33488&gt;</b> , Associated features: <b>&lt;33801&gt;</b> Bonded into: <b>&lt;33477&gt;</b> Contiguous with:		
<b>33488</b>	<b>33487</b>	<b>33801</b>																	
	↓																		
	<b>33486</b>																		
	↓																		
Discussion and interpretation:																			
<p><b>E-w mud brick wall Formed the Northern boundary of house(B) abutted by block of red granite&lt;33488&gt; and bonded into N-S wall&lt;33477&gt; - it coated by crushed marl plaster from the Northern face &lt;33487&gt;</b></p> <p><b>it represents the Northern limit of space (11309)</b></p> <p><b>it built from two courses of mudbrick headers.</b></p>																			

Remember: do not just draw the architectural feature in isolation. Show how it relates to surrounding features and include details of surface treatments, repairs/modifications/damage, bonding material(s), and associated cuts. Annotate all aspects of the feature or use a Drawing Key. Measurements must be included for all aspects of the feature and surrounding features.

**Sketch Plan** - Include grid co-ordinates, North arrow, and elevations.

TBM 26.47  
 BS 0.43  
 LOC 26.90 mAsL  
 T FS RL  
 229 0.81 26.09 mAsL  
 280 0.65 26.25 "  
 270 0.63 26.27  
 BS 2.42  
 LOC 28-89 mAsL  
 15 2.44 26.45 mAsL  
 17 2.21 26.68 "



**Profile Sketch** - State direction the elevation of the feature being drawn is facing e.g. 'West Facing Elevation of Feature ...'. If feature was drawn in section then include the grid co-ordinates and elevations.

Drawing No.'s: 2012-2	Photo No.'s: 512720, 21*
Space No.: 11309	Structure No.: house(B)
Matrix Group:	Matrix Phase: 4a
Samples taken:	