

GIZA PLATEAU MAPPING PROJECT

Grid Square(s) TR. 129	Area KKT-N	Context Type deposit	Central Coords	Context 33528
DEPOSIT			CUT	
1. Compaction		1- Compact		1. Shape in plan 2. Corners 3. Dimension/Depth 4. Break of slope-top 5. Sides 6. Break of slope-base 7. Base 8. Orientation 9. Inclination of axis 10. Truncated (if known) 11. Fill #s 12. Other comments Draw profile overleaf
2. Colour		2- Yellowish white		
3. Composition/Particle Size (Over 10%)		3- 100% crushed limestone		
4. Inclusions (Under 10%) occa / mod / freq		4- -		
5. Thickness and extent		5- 0.75 m thick by 5 m long		
6. Top and bottom boundaries		6- both are clear		
7. Other comments		7- -		
8. Method and conditions		8- handpick, trowel and the weather was sunny		

Type of feature: **Crushed Limestone**

Stratigraphic Matrix

			33527								
This context is			33528								
			33531								

Your interpretation:

	Internal	External	Structural	Other (specify)
--	----------	----------	------------	-----------------

Your discussion:

crushed limestone layer between soft to pubbles

Placement in square

Context same as:	See contexts:
------------------	---------------

Site Book Refs:	Matrix phase: 3	Initials and date SAER 14/12/2012
-----------------	------------------------	---

Checked Interpretation:

Provisional period	Group/Phase	Initials and date
--------------------	-------------	-------------------

Context Number 33528 GPMP 2012

Bag Numbers

Ceramics one plastic bag 2012-0847 Objects

Environmental Samples & Type Exotics

Charcoal one plastic box 2012-0846

Bones Other

Lithics

Photographs 512923

Drawings

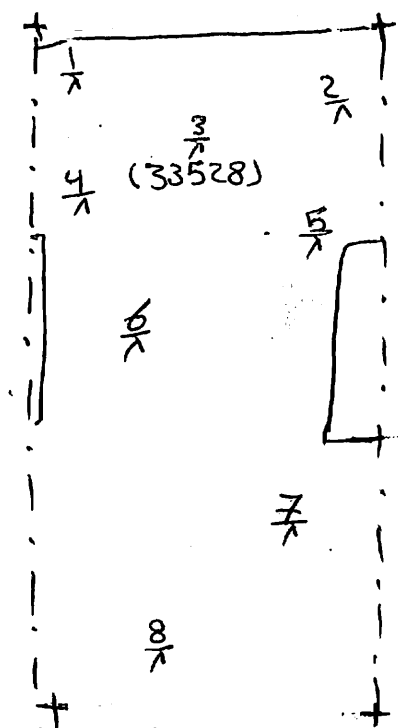
Plans 33528 Sections

Top Elevation 24.93 mASL Bottom Elevations 24.71 mASL

Sketch Plan

TBm 26.47
 Bs 2.19
 Loc 28.66 mASL

FS	RL
1 3.75	24.91 mASL
2 2.85	24.81 "
3 3.73	24.93 "
4 3.95	24.71 "
5 3.76	24.90 "
6 3.90	24.76 "
7 3.97	24.69 "
8 3.93	24.73 "



N 99346.502
 E 500192.993
 N 99346.405
 E 500195.00