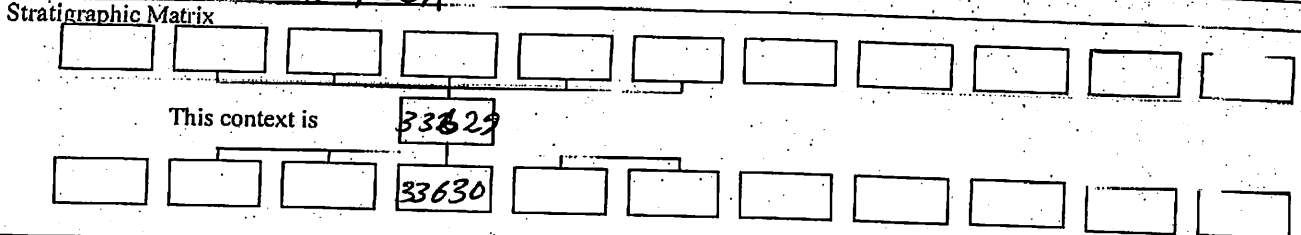


GIZA PLATEAU MAPPING PROJECT

5C

Grid Square(s) 101 N 22	Area MVT-E	Context Type deposit fill	Central Coords	Context 33629
DEPOSIT				CUT
1. Compaction	1 - loose			1. Shape in plan
2. Colour	2 - light yellow			2. Corners
3. Composition/Particle Size (Over 10%)	3 - sand 90%			3. Dimension/Depth
4. Inclusions (Under 10%) occa / mod / freq	4 - crushed lime stone 10%			4. Break of slope-top
5. Thickness and extent	5 - 1.36M (N-S) x 1.22M (E-W) x 1.61M thick			5. Sides
6. Top and bottom boundaries	6 - clear			6. Break of slope-base
7. Other comments	7 -			7. Base
8. Method and conditions	8 - Axe - Sunny			8. Orientation
				9. Inclination of axis
				10. Truncated (if known)
				11. Fill #s
				12. Other comments Draw profile overleaf

Type of feature: **Sand rich**



Your interpretation: Internal External Structural Other (specify)

Your discussion:

Fill of cat [33630] may be the sand fall down into the cut after Reibner's excavation

(NOT FULL DEC.)

Placement in square

Context same as:	See contexts:
Site Book Refs:	Matrix phase:
	Initials and date AMAG 16 II 2012

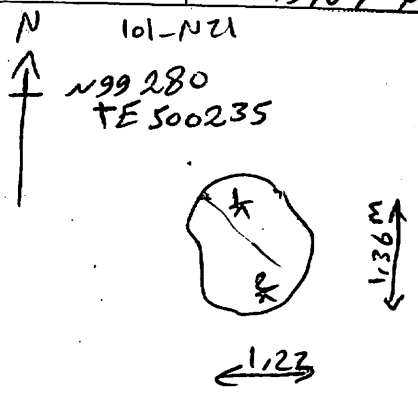
Checked Interpretation:

Provisional period	Group/Phase	Initials and date
--------------------	-------------	-------------------

Context Number 33629		GPMP MVT-E 2012	
Bag Numbers			
Ceramics		Objects	
Environmental Samples & Type		Exotics	
Charcoal		Other	
Bones			
Lithics			
Photographs			
Drawings			
Plans	Sections		
<i>see cut P (33630)</i>			
Top Elevation	Bottom Elevations		
19.73 M ASL	19.07 M ASL		

Sketch Plan

TBM 19.75
 BS 1.02
 loc 20.77
 FS RL
 1.04 19.73
 1.70 19.07



+ 101N22
 N 99280
 E 500240

101-M21
 +
 N99275
 E 500235

101-M22
 + N99275
 E 500240