

AREA: MUE	GRID SQUARE (S): 101-I 19 J 19 K 19	GRID CO-ORDINATES: E N	INITIALS & DATE: AMF/AJ 22/12/12	FEATURE No.: 33647
--------------	--	------------------------------	-------------------------------------	-----------------------

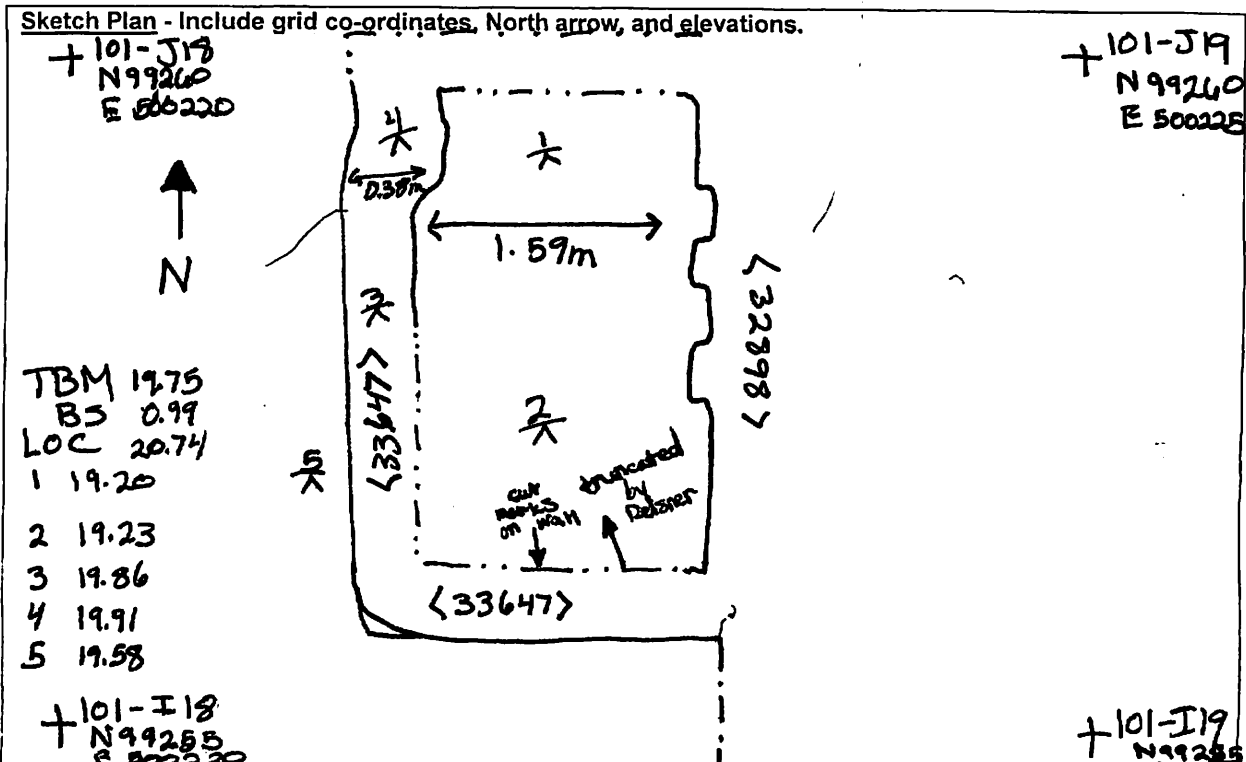
FEATURE TYPE (For example wall, staircase, bench, foundation structure, platform etc.): Internal Wall	Full extent visible in plan: <input checked="" type="radio"/> YES <input type="radio"/> NO
--	---

1. Dimensions (in metres)	Length: 8-10 (N-S)	Width: (E-W) 2.00	Height: 1.38
2. Type of material(s) used	A Silty MBS B Bubblegum bricks		
3. Coursing (form of construction)	A stretchers (AS seen) occa headers		
4. Orientation	(N-S) & (E-W)		
5. Associated collapse	N/A		
6. Cut & fill feature #'s	N/A		
7. Repaired?	Unseen		
8. Associated floors	Unseen		
9. Surface treatments? E.g. plaster, paint, mouldings	N/A		
10. Size of one component	A 300mm x 150mm x ? B 150mm x 100mm (header)		
11. Bonding material	Loose, light, yellowish gray, silty mortar, plaster?		
12. Excavated	Yes/No <input checked="" type="radio"/> Yes <input type="radio"/> No		

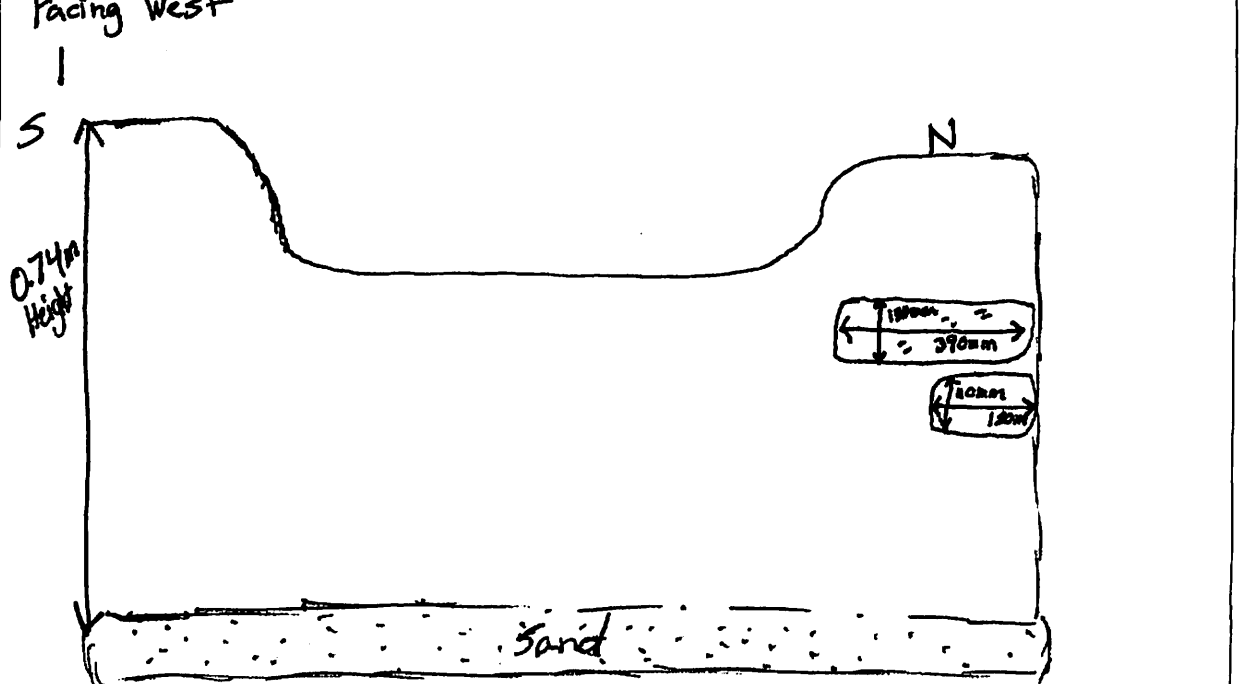
Mini stratigraphic matrix 	Abuts: Same as: Abutted by: Associated features: Bonded into: Contiguous with:
-------------------------------	---

Discussion and interpretation:  
 TRUNCATED MBS WALL - POSS REMAINS OF  
 BTM PLYN. WALL EXCAVATED BY REBORING.

Remember: do not just draw the architectural feature in isolation. Show how it relates to surrounding features and include details of surface treatments, repairs/modifications/damage, bonding material(s), and associated cuts. Annotate all aspects of the feature or use a Drawing Key. Measurements must be included for all aspects of the feature and surrounding features.



Profile Sketch - State direction the elevation of the feature being drawn is facing e.g. 'West Facing'. Elevation of Feature .... If feature was drawn in section then include the grid co-ordinates and elevations.



Drawing No.'s: 2012-24, 2012-112	Photo No.'s:
Space No.:	Structure No.: 18169
Matrix Group:	Matrix Phase:
Samples taken:	