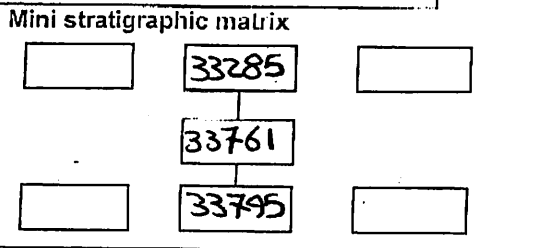


AREA: KKFN	GRID SQUARE (S): 201 C 13	GRID CO-ORDINATES: E N	INITIALS & DATE: SAER 22/12/12	FEATURE No.: 33761
----------------------	-------------------------------------	------------------------------	--	------------------------------

FEATURE TYPE (For example wall, staircase, bench, foundation structure, platform etc.): blocking event	Full extent visible in plan: <input checked="" type="radio"/> YES / NO
--	---

1. Dimensions (in metres)	Length: 1.04m	Width: 0.78m	Height: 0.02m
2. Type of material(s) used	mudbrick		
3. Coursing (form of construction)	three courses		
4. Orientation	N-S		
5. Associated collapse	-		
6. Cut & fill feature #'s	-		
7. Repaired?	-		
8. Associated floors	-		
9. Surface treatments? E.g. <u>plaster</u> , paint, mouldings	33285		
10. Size of one component	0.40m x 0.20m		
11. Bonding material	sandy silt		
12. Excavated	Yes <input checked="" type="radio"/> No <input type="radio"/> not excavated		



Abuts: **<33760>, <33762>** Same as:

Abutted by: Associated features:

Bonded into:

Contiguous with:

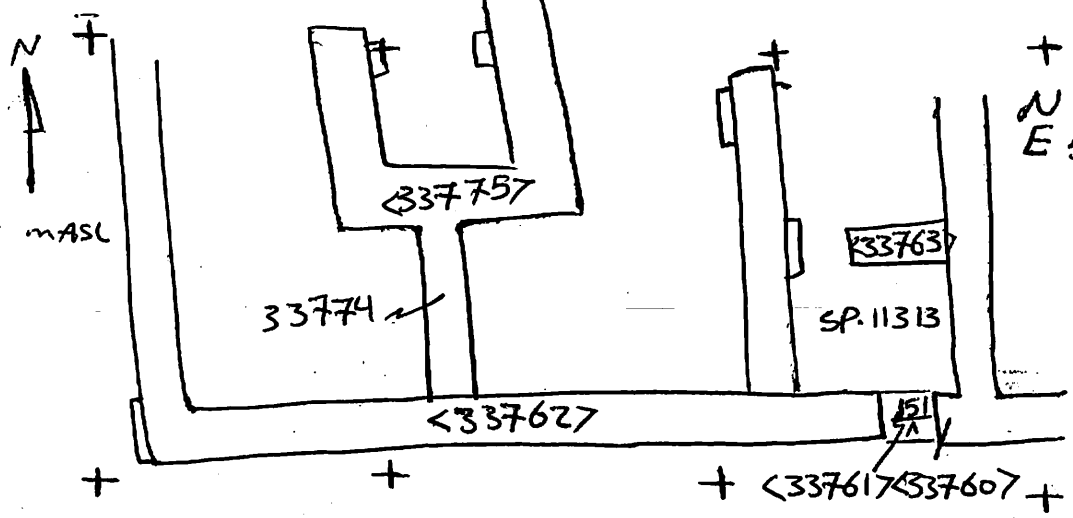
Discussion and interpretation:

N-S mudbrick blocking event blocked the southeast entrance of house (A). It consists of three courses two courses are headers and between them one course strecher. This block abuts N-S mudbrick door jamb <33760> and E-W mudbrick wall <33762> and coated with later plaster (33285).

Remember: do not just draw the architectural feature in isolation. Show how it relates to surrounding features and include details of surface treatments, repairs/modifications/damage, bonding material(s), and associated cuts. Annotate all aspects of the feature or use a Drawing Key. Measurements must be included for all aspects of the feature and surrounding features.

Sketch Plan - Include grid co-ordinates, North arrow, and elevations.

TBm 26.47
 BS 1.92
 Loc 28.39
 FS RL
 151 285 25.54 mASL



Profile Sketch - State direction the elevation of the feature being drawn is facing e.g. 'West Facing Elevation of Feature If feature was drawn in section then include the grid co-ordinates and elevations.

Drawing No.'s: 2012-4	Photo No.'s: 512403
Space No.: 11313	Structure No.: house (A)
Matrix Group:	Matrix Phase: 6
Samples taken:	