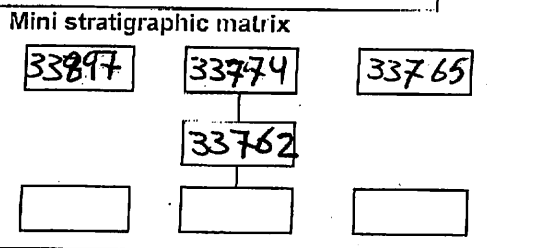


AREA: <b>KKT-N</b>	GRID SQUARE (S): 201 C13 201 C12 201 C11	GRID CO-ORDINATES: E N	INITIALS & DATE: <b>SAER 22/12/12</b>	FEATURE No.: <b>33762</b>
FEATURE TYPE (For example <u>wall</u> , staircase, bench, foundation structure, platform etc.): <b>wall</b>			Full extent visible in plan: <input checked="" type="radio"/> YES / NO	

1. Dimensions (in metres)	Length: <b>10.50m</b>	Width: <b>1.03m</b>	Height: <b>0.15m</b>
2. Type of material(s) used	<b>mudbrick</b>		
3. Coursing (form of construction)	<b>three courses</b>		
4. Orientation	<b>E-w</b>		
5. Associated collapse	-		
6. Cut & fill feature #'s	-		
7. Repaired?	-		
8. Associated floors			
9. Surface treatments? E.g. <u>plaster</u> , paint, mouldings	<b>33796, 33797, 33798 33795, 33285</b>		
10. Size of one component	<b>0.40m X 0.20m</b>		
11. Bonding material	<b>sandy silt</b>		
12. Excavated	Yes/NO <input checked="" type="radio"/> <b>not excavated</b>		



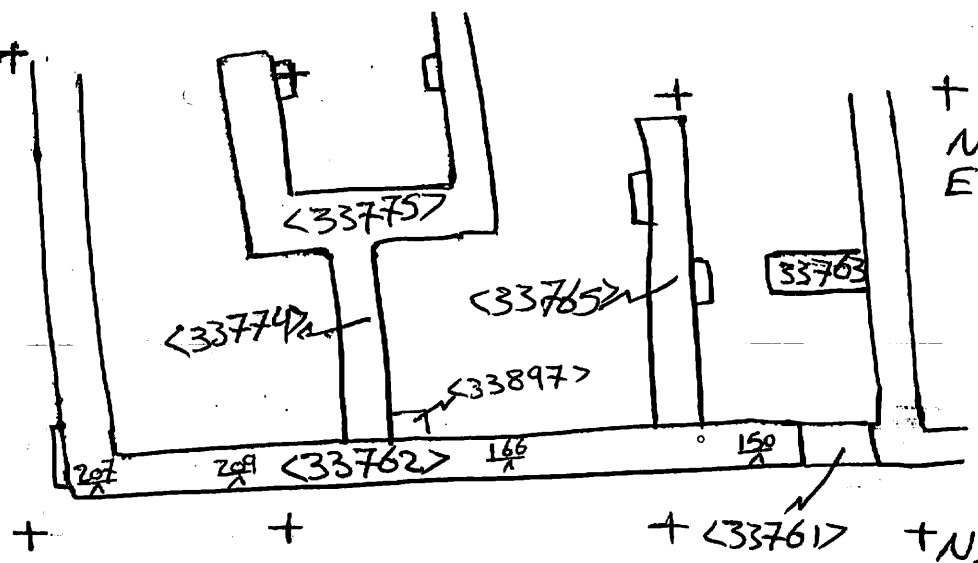
Abuts: Same as:  
 Abutted by: <33774>, Associated features:  
 <33897>, <33765>  
 Bonded into: <33781>  
 Contiguous with:

Discussion and interpretation:  
**E-w mudbrick wall formed the southern boundary of house (A) it is very badly eroded and we can't see the details of bricks until 5.50m after that it consists of three courses the out line of the wall are headers and between them one row strecher.**

Remember: do not just draw the architectural feature in isolation. Show how it relates to surrounding features and include details of surface treatments, repairs/modifications/damage, bonding material(s), and associated cuts. Annotate all aspects of the feature or use a Drawing Key. Measurements must be included for all aspects of the feature and surrounding features.

Sketch Plan - Include grid co-ordinates, North arrow, and elevations.

TBm 26.47  
 BS 1.92  
 Loc 28.39 mAsL  
 T FS RL  
 150 2.77 25.62  
 166 2.55 25.84  
 207 2.13 26.26  
 209 2.34 26.05



201 C13  
 N99355.00  
 E500195.00  
 N99350.00  
 E500195.00

Profile Sketch - State direction the elevation of the feature being drawn is facing e.g. 'West Facing Elevation of Feature .... If feature was drawn in section then include the grid co-ordinates and elevations.

Drawing No.'s: 2012-4	Photo No.'s: 513101
Space No.: 11313, 11317, 11321	Structure No.: house (A)
Matrix Group:	Matrix Phase: 4a
Samples taken:	