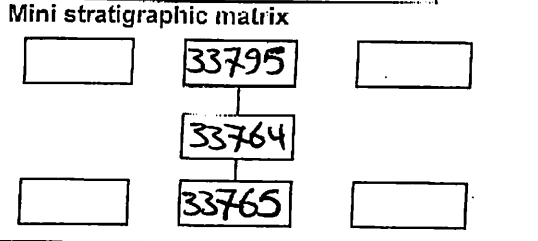


AREA: KKT-N	GRID SQUARE (S): 201 E13	GRID CO-ORDINATES: E N	INITIALS & DATE: SAER 22/12/12	FEATURE No.: 33764
FEATURE TYPE (For example wall, staircase, bench, foundation structure, platform etc.): door jamb			Full extent visible in plan: <input checked="" type="radio"/> YES / NO	

1. Dimensions (in metres)	Length: 0.62 M	Width: 0.20 M	Height: 0.10 M
2. Type of material(s) used	mudbrick		
3. Coursing (form of construction)	one course		
4. Orientation	N-S		
5. Associated collapse	-		
6. Cut & fill feature #'s	-		
7. Repaired?	-		
8. Associated floors	-		
9. Surface treatments? E.g. <u>plaster</u> , paint, mouldings	(33795)		
10. Size of one component	0.42 m X 0.20 m		
11. Bonding material	Sandy silt		
12. Excavated	Yes <input checked="" type="radio"/> No <input type="radio"/> not excavated		

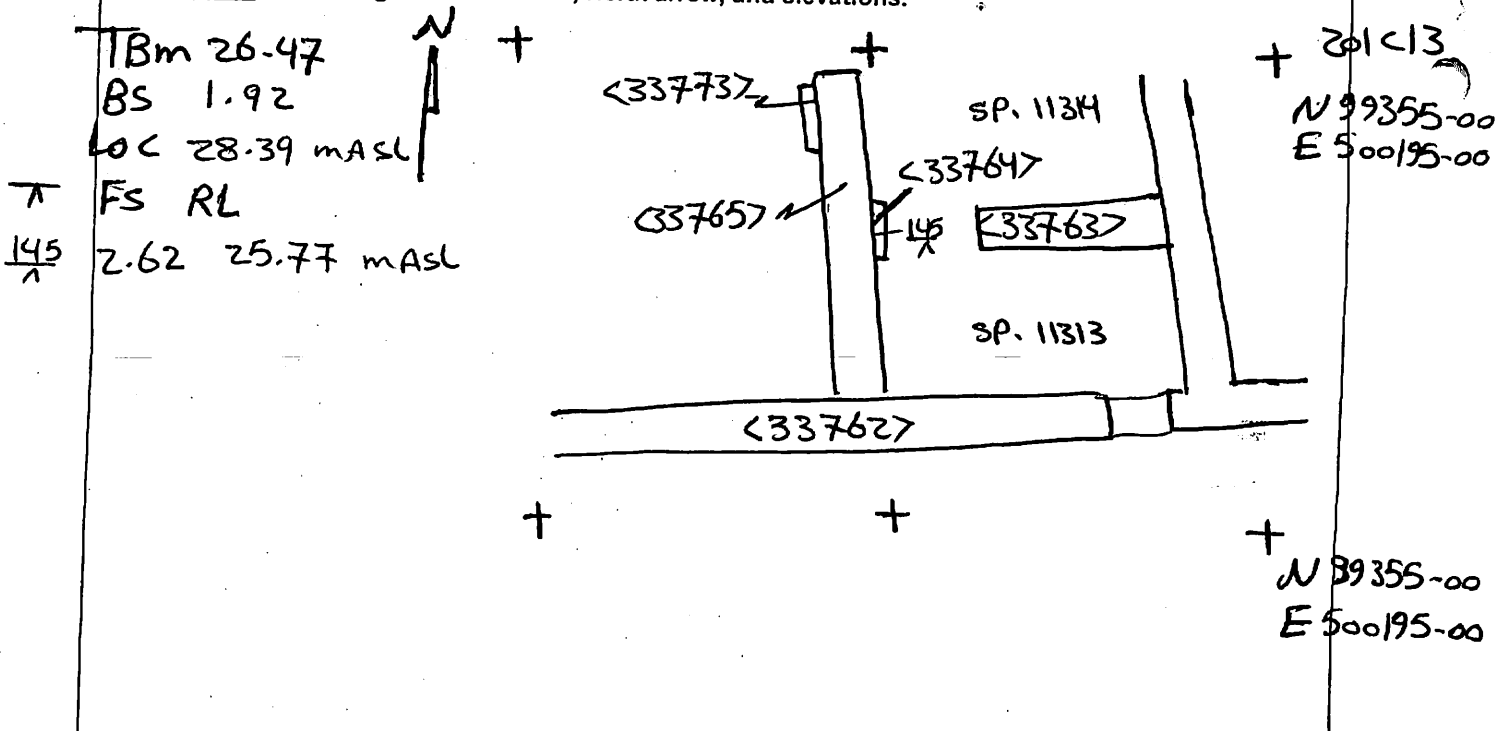


Abuts: <33765>      Same as:  
 Abutted by:      Associated features:  
 Bonded into:  
 Contiguous with:

Discussion and interpretation:  
 N-S mudbrick door jamb abuts N-S mudbrick wall  
 <33765> From the eastern face.  
 It coated with crushed desert tafla Plaster (33795)

Remember: do not just draw the architectural feature in isolation. Show how it relates to surrounding features and include details of surface treatments, repairs/modifications/damage, bonding material(s), and associated cuts. Annotate all aspects of the feature or use a Drawing Key. Measurements must be included for all aspects of the feature and surrounding features.

Sketch Plan - Include grid co-ordinates, North arrow, and elevations.



Profile Sketch - State direction the elevation of the feature being drawn is facing e.g. 'West Facing Elevation of Feature .... If feature was drawn in section then include the grid co-ordinates and elevations.

Drawing No.'s: 2012-4	Photo No.'s: 513107 - 513108
Space No.: 11314, 11313	Structure No.: house(A)
Matrix Group:	Matrix Phase: 4b
Samples taken:	