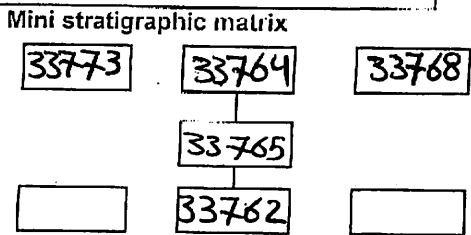


AREA: KKT-N	GRID SQUARE (S): 201 C13 201 C12	GRID CO-ORDINATES: E N	INITIALS & DATE: SABR 22ii 2012	FEATURE No.: 33765
FEATURE TYPE (For example wall, staircase, bench, foundation structure, platform etc.): wall			Full extent visible in plan: <input checked="" type="radio"/> YES / NO	

1. Dimensions (in metres)	Length: 2.85	Width: 0.66m	Height: 0.10m
2. Type of material(s) used	mud brick		
3. Coursing (form of construction)	two courses		
4. Orientation	N-S		
5. Associated collapse	-		
6. Cut & fill feature #'s	-		
7. Repaired?	-		
8. Associated floors	-		
9. Surface treatments? E.g. plaster, paint, mouldings	33795		
10. Size of one component	0.40m x 0.20m		
11. Bonding material	Sandy silt		
12. Excavated	Yes <input checked="" type="radio"/> No <input type="radio"/> Not excavated		



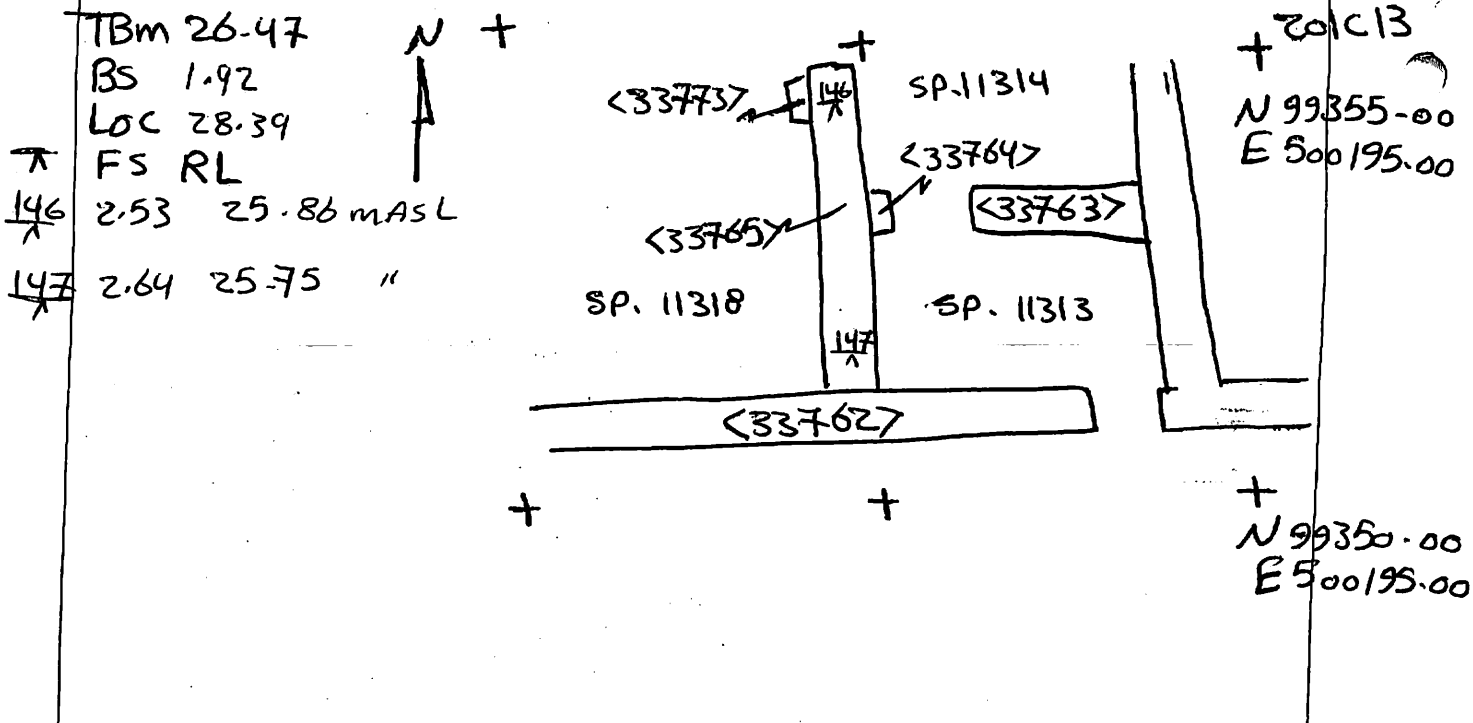
Abuts: <33762> Same as:
 Abutted by: <33764>, <33773>, <33768> Associated features:
 Bonded into:
 Contiguous with:

Discussion and interpretation:

N-S mudbrick wall abuts the southern boundary of house (A) <33762> and abutted by <33768>. It is consist of two courses the eastern face header and the western face stretcher. It coated with (33795) from the eastern face

Remember: do not just draw the architectural feature in isolation. Show how it relates to surrounding features and include details of surface treatments, repairs/modifications/damage, bonding material(s), and associated cuts. Annotate all aspects of the feature or use a Drawing Key. Measurements must be included for all aspects of the feature and surrounding features.

Sketch Plan - Include grid co-ordinates, North arrow, and elevations.



Profile Sketch - State direction the elevation of the feature being drawn is facing e.g. 'West Facing Elevation of Feature If feature was drawn in section then include the grid co-ordinates and elevations.

Drawing No.'s: 2012-4	Photo No.'s: 513108-513109
Space No.: 11318, 11313, 11314	Structure No.: house A
Matrix Group:	Matrix Phase: 4b
Samples taken:	