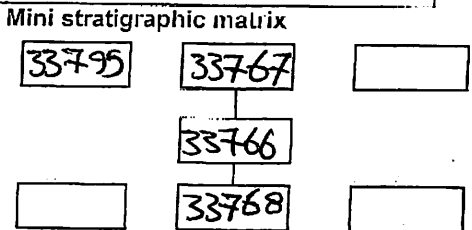


AREA: KKT-N	GRID SQUARE (S): 201 D13	GRID CO-ORDINATES: E N	INITIALS & DATE: SAER 22ii 2012	FEATURE No.: 33766
FEATURE TYPE (For example <u>wall</u>) staircase, bench, foundation structure, platform etc.): wall			Full extent visible in plan: <input checked="" type="checkbox"/> YES / NO	

1. Dimensions (in metres)	Length: 1.40 M	Width: 0.65 M	Height: 0.10 M
2. Type of material(s) used	mudbrick		
3. Coursing (form of construction)	two Courses		
4. Orientation	E-W		
5. Associated collapse	-		
6. Cut & fill feature #'s	-		
7. Repaired?	-		
8. Associated floors	-		
9. Surface treatments? E.g. <u>plaster</u> , paint, mouldings	33795		
10. Size of one component	0.40 m X 0.20 m		
11. Bonding material	Sandy silt		
12. Excavated	Yes <input checked="" type="checkbox"/> No <input type="checkbox"/> not excavated		



Abuts: <33768> Same as:
 Abutted by: <33767> Associated features:
 Bonded into:
 Contiguous with:

Discussion and interpretation:

E-W mudbrick wall abuts <33768> and abutted by <33767>
 it consist of two courses between stretcher and header
 it coated with (33795)

Remember: do not just draw the architectural feature in isolation. Show how it relates to surrounding features and include details of surface treatments, repairs/modifications/damage, bonding material(s), and associated cuts. Annotate all aspects of the feature or use a Drawing Key. Measurements must be included for all aspects of the feature and surrounding features.

Sketch Plan - Include grid co-ordinates, North arrow, and elevations.

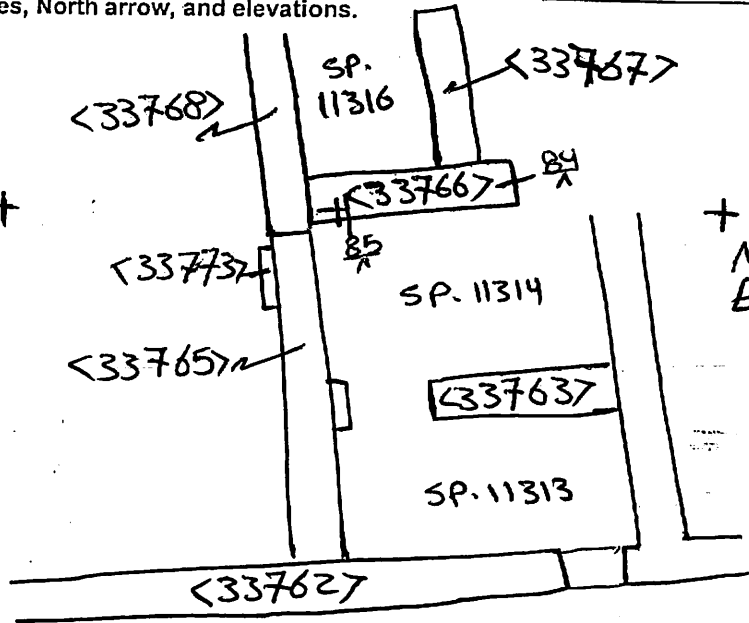
Bm 26.47
 BS 2.42
 Loc 28.89 mASL
 FS RL
 84 2.94 25.95 mASL
 85 2.87 26.02 "



+

+

+



+ 20113
 N 99355.00
 E 500195.00
 + N 99350.00
 E 500195.00

Profile Sketch - State direction the elevation of the feature being drawn is facing e.g. 'West Facing Elevation of Feature If feature was drawn in section then include the grid co-ordinates and elevations.

Drawing No.'s: 2012-4	Photo No.'s: 513119 - 513108
Space No.: 11316	Structure No.: house A
Matrix Group:	Matrix Phase: 4b
Samples taken:	