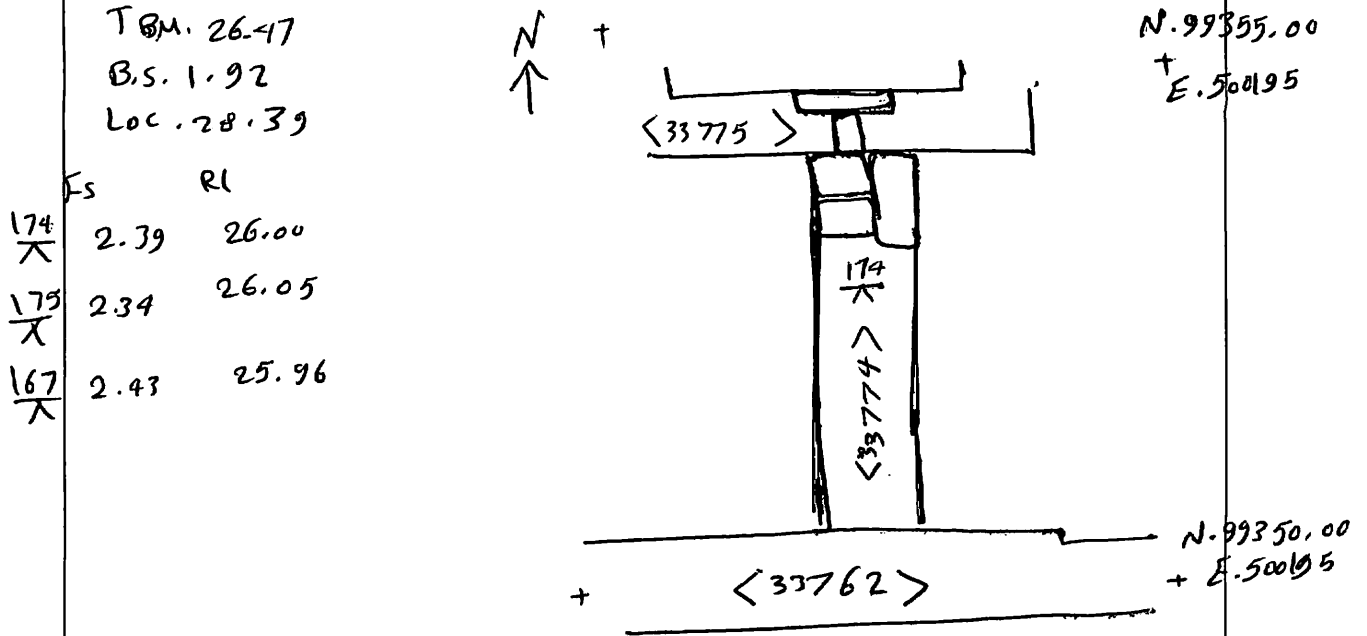


AREA: KKT.N	GRID SQUARE (S): 201 E12	GRID CO-ORDINATES: E N	INITIALS & DATE: MFMH 25/11/2012	FEATURE No.: 33774									
FEATURE TYPE (For example wall, staircase, bench, foundation structure, platform etc.): wall			Full extent visible in plan: <input checked="" type="radio"/> YES <input type="radio"/> NO										
1. Dimensions (in metres)		Length: 1.92 m	Width: 0.68 m	Height: 0.10 m									
2. Type of material(s) used		mudbrick											
3. Coursing (form of construction)		Two courses											
4. Orientation		N-S											
5. Associated collapse		—											
6. Cut & fill feature #'s		—											
7. Repaired?		—											
8. Associated floors		—											
9. Surface treatments? E.g. plaster, paint, mouldings		plastered by (33798)											
10. Size of one component		0.40 m by 0.20 m											
11. Bonding material		Sandy-silt											
12. Excavated		Yes/No <input checked="" type="radio"/> No											
Mini stratigraphic matrix		Abuts: <33762> Same as:											
<table border="1"> <tr> <td></td> <td>33798</td> <td>33775</td> </tr> <tr> <td></td> <td>33774</td> <td></td> </tr> <tr> <td></td> <td>33762</td> <td></td> </tr> </table>			33798	33775		33774			33762		Abutted by: <33775> Associated features:		
	33798	33775											
	33774												
	33762												
		Bonded into:											
		Contiguous with:											
Discussion and Interpretation:													
<p>it is a mudbrick wall (N-S), it measures 1.92 m length by 0.68 m height width. it consists of two mudbrick courses, the western face is headers, the eastern one is stretchers, it is abuted by <33775> and abuts <33762> and plastered by (33798) at the western face, it is located between the spaces (11318), (11321). the</p>													

Remember: do not just draw the architectural feature in isolation. Show how it relates to surrounding features and include details of surface treatments, repairs/modifications/damage, bonding material(s), and associated cuts. Annotate all aspects of the feature or use a Drawing Key. Measurements must be included for all aspects of the feature and surrounding features.

Sketch Plan - Include grid co-ordinates, North arrow, and elevations.



Profile Sketch - State direction the elevation of the feature being drawn is facing e.g. 'West Facing Elevation of Feature If feature was drawn in section then include the grid co-ordinates and elevations.

Drawing No.'s: 2012 - 4	Photo No.'s: 513109 - 513116
Space No.: (11318), (11321)	Structure No.: house (A)
Matrix Group:	Matrix Phase: 4b
Samples taken:	