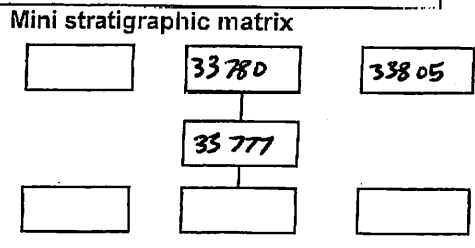


| | | | | |
|-----------------------|--|--|---|------------------------------|
| AREA: KKT.N | GRID SQUARE (S): E01C12 E01D12 | GRID CO-ORDINATES: E N | INITIALS & DATE: MFH 26 ii 2012 | FEATURE No.: 33777 |
|-----------------------|--|--|---|------------------------------|

| | |
|--|---|
| FEATURE TYPE (For example wall, staircase, bench, foundation structure, platform etc.): Wall | Full extent visible in plan: <input checked="" type="radio"/> YES / NO |
|--|---|

| | | | |
|---|---|-------------------------|--------------------------|
| 1. Dimensions (in metres) | Length: 5.52 m | Width: 0.65 m | Height: 0.05 m |
| 2. Type of material(s) used | two courses of mud brick | | |
| 3. Coursing (form of construction) | two courses | | |
| 4. Orientation | N-S | | |
| 5. Associated collapse | — | | |
| 6. Cut & fill feature #'s | — | | |
| 7. Repaired? | — | | |
| 8. Associated floors | — | | |
| 9. Surface treatments? E.g. plaster, paint, mouldings | plastered by (33780), (33805). | | |
| 10. Size of one component | 0.40 m by 0.20 m | | |
| 11. Bonding material | sandy silt | | |
| 12. Excavated | Yes <input checked="" type="radio"/> No | | |



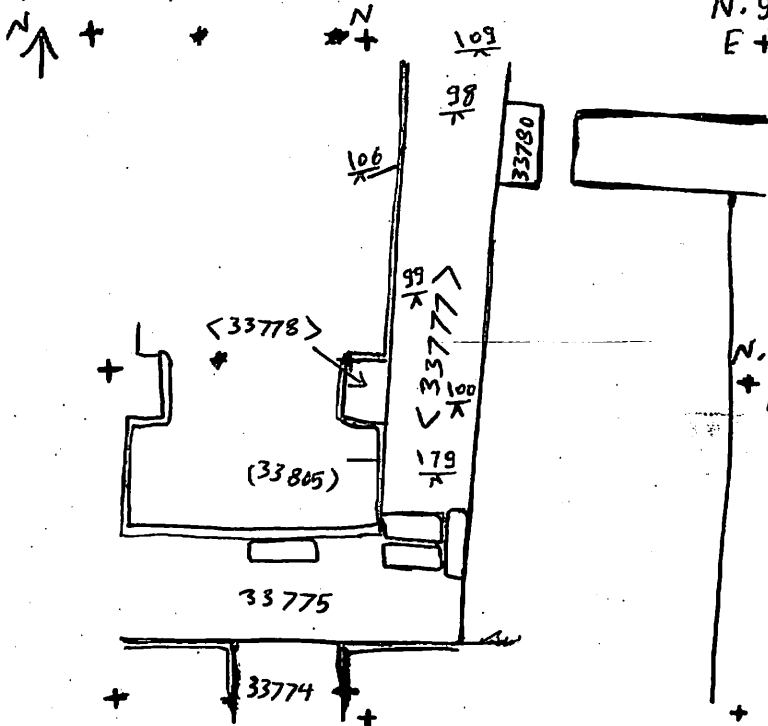
Abuts: Same as:
 Abutted by: **<33778>, <33780>** Associated features:
 Bonded into: **<33775>**
 Contiguous with:

Discussion and interpretation:
 it is a mud brick wall (N-S), it measures 5.52 m by 0.65 m. it consists of two courses, the western one is stretchers, the eastern one is headers, it is bonded into the wall <33775> and is abuted by the two door Jambs <33776>, <33780> and plastered by two plaster layer. (33805), (33780). it is located between the spaces (11318), (11322).

Remember: do not just draw the architectural feature in isolation. Show how it relates to surrounding features and include details of surface treatments, repairs/modifications/damage, bonding material(s), and associated cuts. Annotate all aspects of the feature or use a Drawing Key. Measurements must be included for all aspects of the feature and surrounding features.

Sketch Plan - Include grid co-ordinates, North arrow, and elevations.

TBM 26.47
 B.S 2.42
 Loc 28.89
 F.S. RL.
 $\frac{98}{\times}$ 2.51 26.38
 $\frac{99}{\times}$ 2.66 26.23
 $\frac{100}{\times}$ 2.74 26.15
 $\frac{106}{\times}$ 2.55 26.35
 $\frac{109}{\times}$ 2.54 26.35
 B.S 1.92
 L.o.c 28.39
 F.S RL
 $\frac{179}{\times}$ 2.46 25.99



Profile Sketch - State direction the elevation of the feature being drawn is facing e.g. 'West Facing Elevation of Feature If feature was drawn in section then include the grid co-ordinates and elevations.

| | |
|-------------------------|----------------------------|
| Drawing No.'s: 2612-4 | Photo No.'s: 513109-513116 |
| Space No.: 11322, 11318 | Structure No.: house(A). |
| Matrix Group: | Matrix Phase: 4b |
| Samples taken: | |