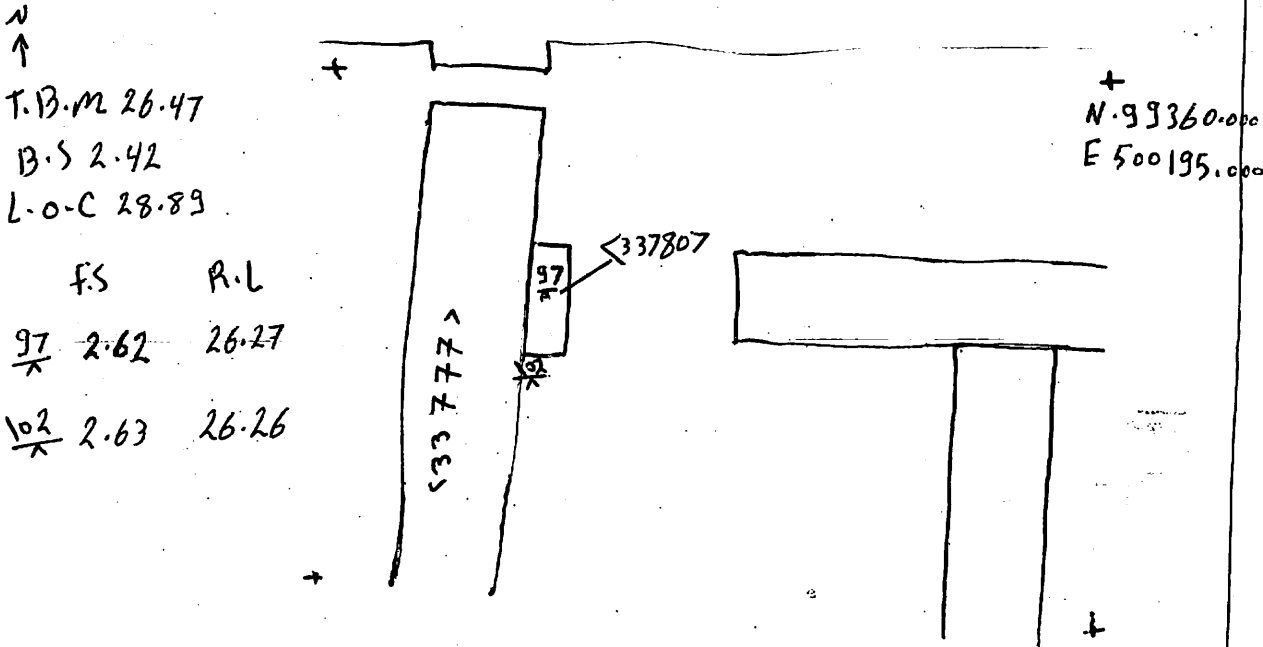


AREA: KKT.N	GRID SQUARE (S): 201D12	GRID CO-ORDINATES: E N	INITIALS & DATE: AFAM AFAM 26 ii 2012	FEATURE No.: 33780									
FEATURE TYPE (For example wall, staircase, bench, foundation structure, platform etc.): bulah Door JAMP			Full extent visible in plan: <input checked="" type="radio"/> YES / NO										
1. Dimensions (in metres)		Length: 0.66m	Width: 0.21 m	Height: 0.6 m									
2. Type of material(s) used		mud brick											
3. Coursing (form of construction)		2 mud brick unit											
4. Orientation		N-S											
5. Associated collapse		—											
6. Cut & fill feature #'s		—											
7. Repaired?		—											
8. Associated floors		—											
9. Surface treatments? E.g. plaster, paint, mouldings		—											
10. Size of one component		0.40m x 0.21 m											
11. Bonding material		Sandy silt											
12. Excavated		Yes/No No											
Mini stratigraphic matrix		Abuts: <33777> Same as:											
<table border="1"> <tr> <td></td> <td></td> <td></td> </tr> <tr> <td></td> <td>33780</td> <td></td> </tr> <tr> <td></td> <td>33777</td> <td></td> </tr> </table>						33780			33777		Abutted by: Associated features:		
	33780												
	33777												
		Bonded into:											
		Contiguous with:											
Discussion and interpretation: it is mud brick N-S doorjamp, abuts wall <33777> measures 0.66m length 0.21m width 0.6m height.													

Remember: do not just draw the architectural feature in isolation. Show how it relates to surrounding features and include details of surface treatments, repairs/modifications/damage, bonding material(s), and associated cuts. Annotate all aspects of the feature or use a Drawing Key. Measurements must be included for all aspects of the feature and surrounding features.

Sketch Plan - Include grid co-ordinates, North arrow, and elevations.



Profile Sketch - State direction the elevation of the feature being drawn is facing e.g. 'West Facing Elevation of Feature If feature was drawn in section then include the grid co-ordinates and elevations.

Drawing No.'s: 2012-4	Photo No.'s: 513109-513110
Space No.: 11318	Structure No.: house (A)
Matrix Group:	Matrix Phase: 4b
Samples taken:	